



DROP FORGED CHAIN&CASTED CHAIN



CHANGZHOU AMEC GROUP

Add: No.62 XingGang Rd,Changzhou,Jiangsu,China

Tel: +86-519-83978002 83900202

Fax: +86-519-83978999 86600406

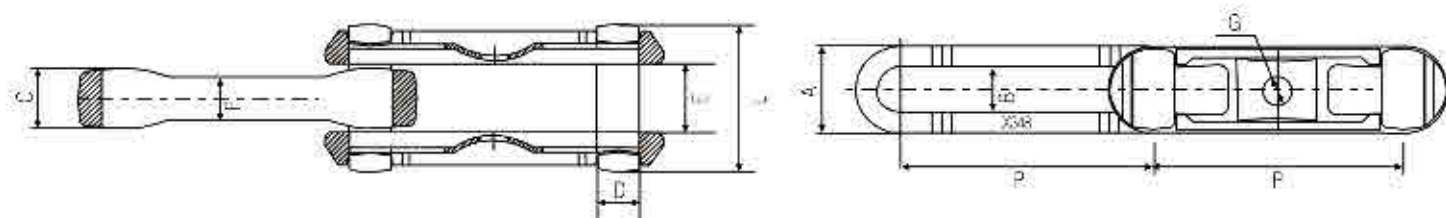
E-mail: sales@amecco.com

Http: [//www.amecco.com](http://www.amecco.com)

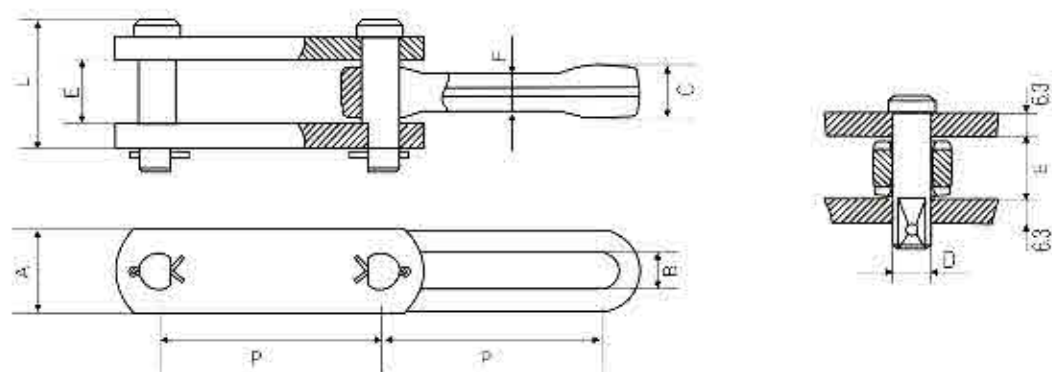
CHANGZHOU AMEC GROUP



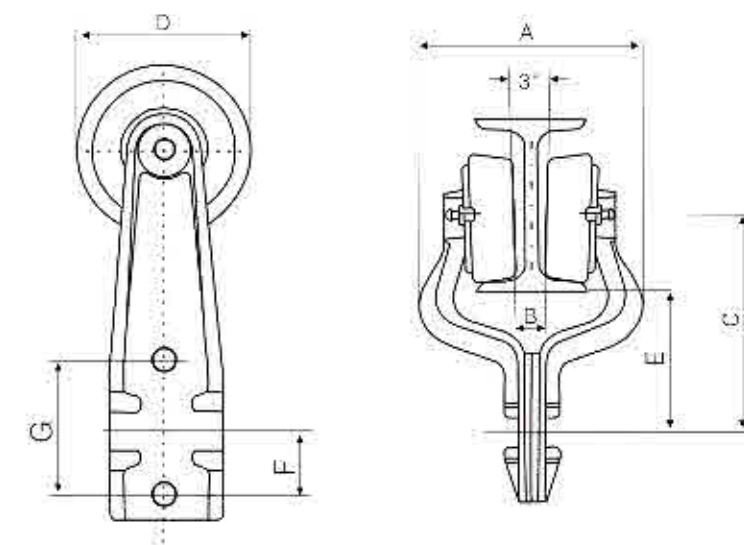
X348



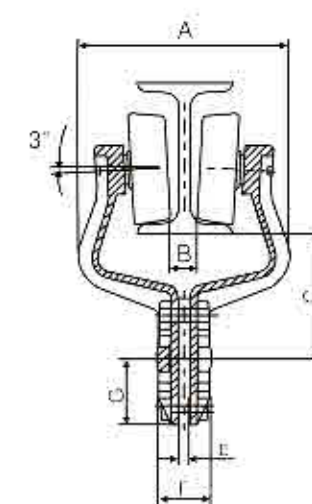
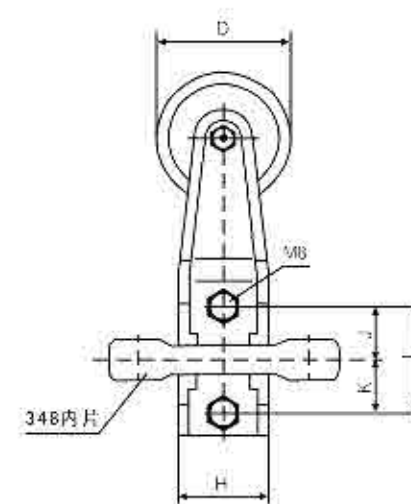
S348



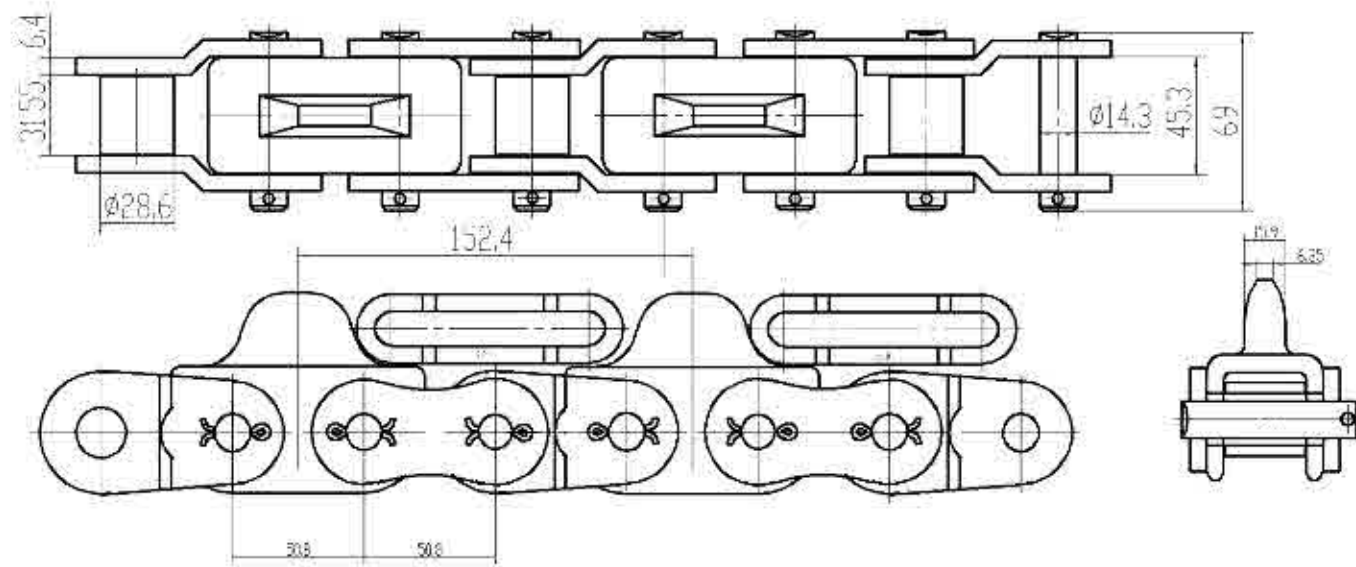
链号 Chain Number	节距 Pitch P	销轴直径 Pin dia. D	销轴长度 Pin Length L	链件参数 Chain Shaft Dimensions						抗拉强度 Ultimate tensile strength Q
				A	B	C	E	F	G	
	mm	mm	mm	mm	mm	mm	mm	mm	mm	KN
X348	76.2	12.7	46	27	13.5	18.5	20.5	13.2	8.5	110KN
S348	76.2	12.7	40.8	27	13.5	18.5	20.5	13.2	-	110KN



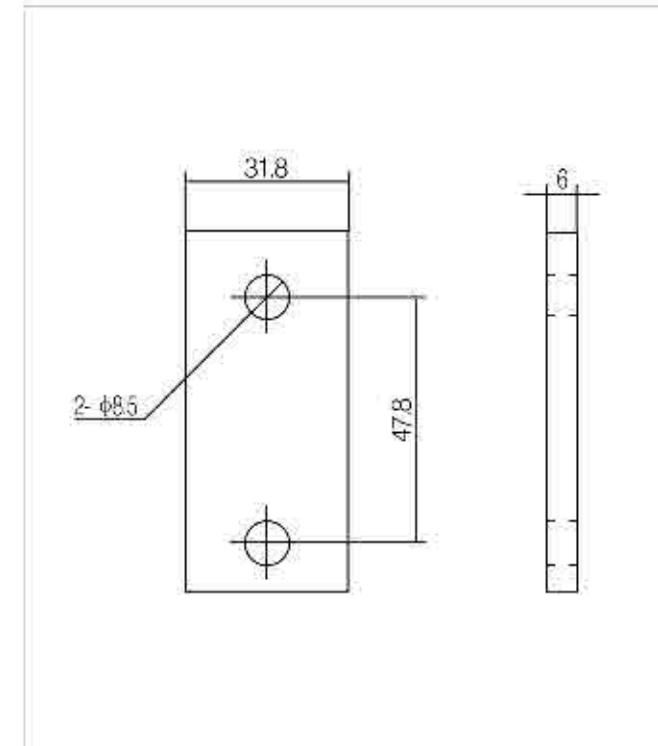
链号 Chain Number	链件参数 Chain Shaft Dimensions						
	A mm	B mm	C mm	D mm	E mm	F mm	G mm
X348 trolley	102	14	100	60	63.5	22.4	47.8



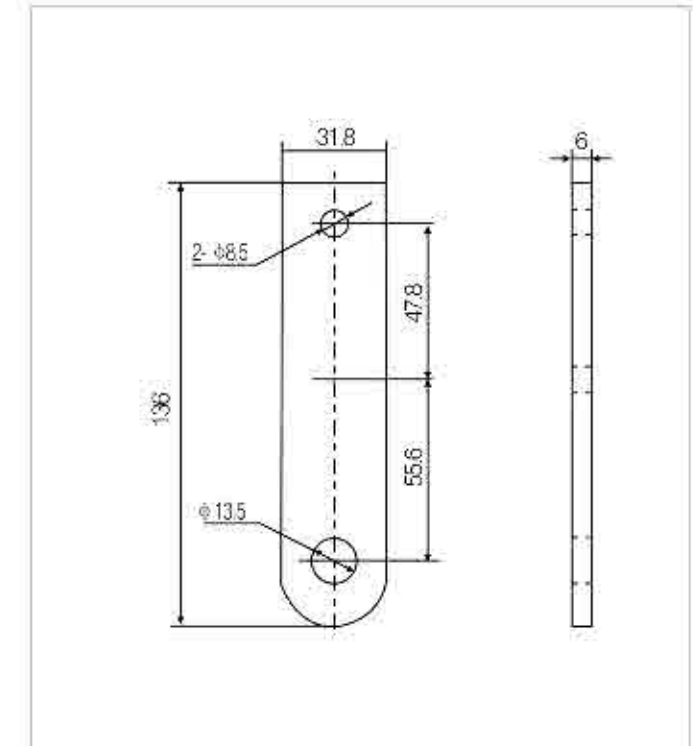
链号 Chain Number	链件参数 Chain Shaft Dimensions										
	A mm	B mm	C mm	D mm	E mm	F mm	G mm	H mm	I mm	J mm	K mm
X348 trolley	122	14	63.5	60	6	28.6	33	40	48	25	22



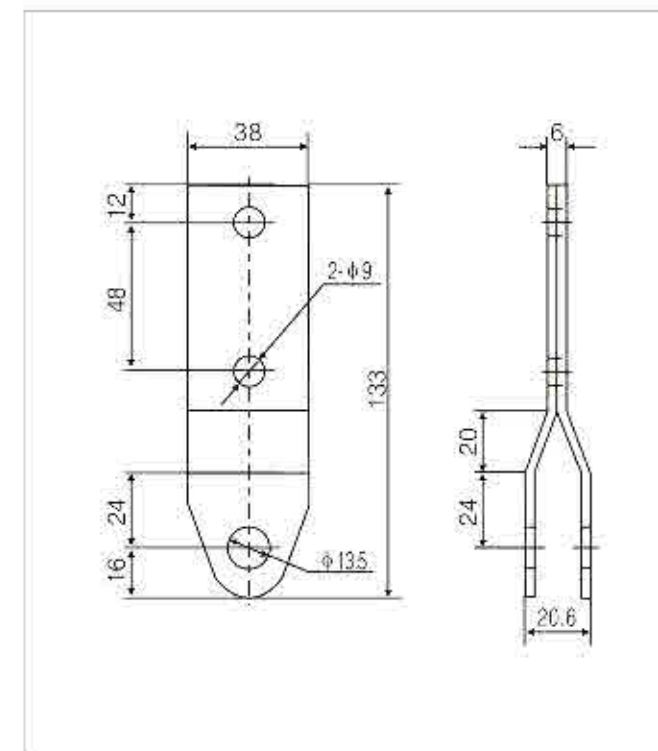
[Attachments of 348](#)



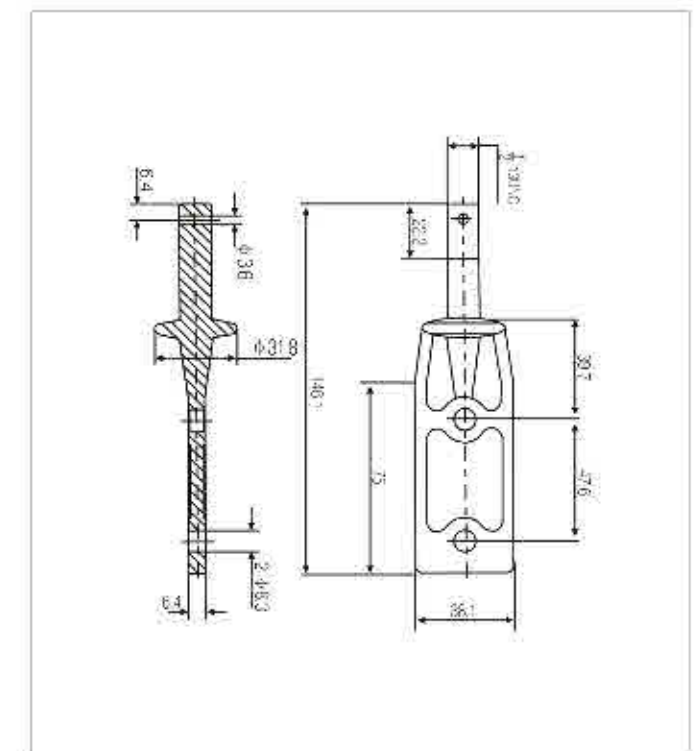
X348 “I” 型



X348 "C" 型



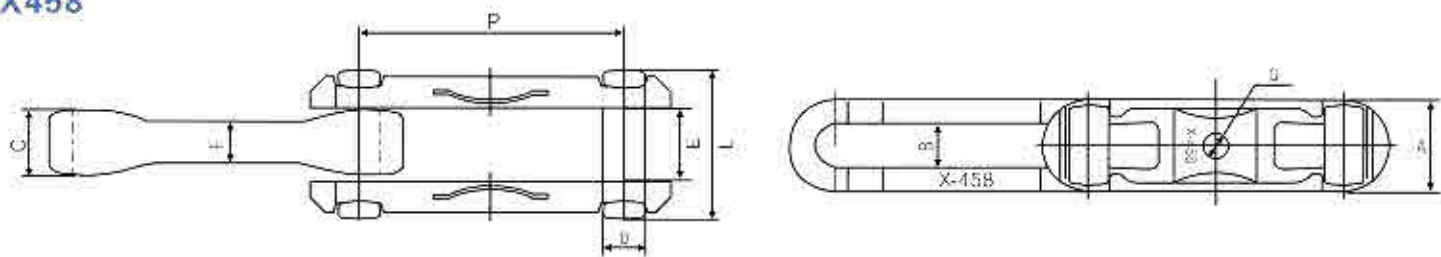
X348 “H” 型



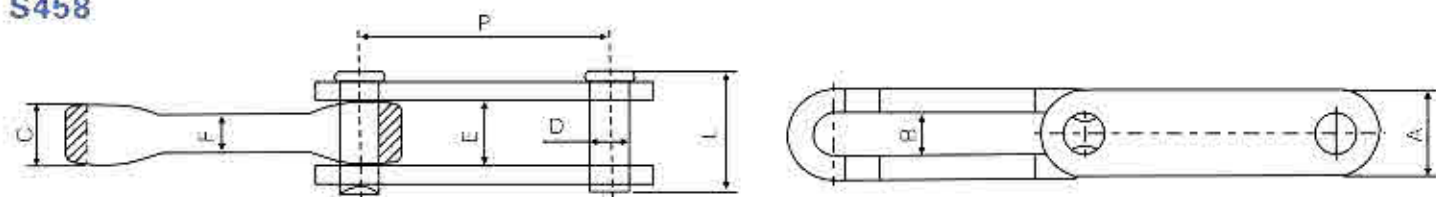
X348 "B" 型



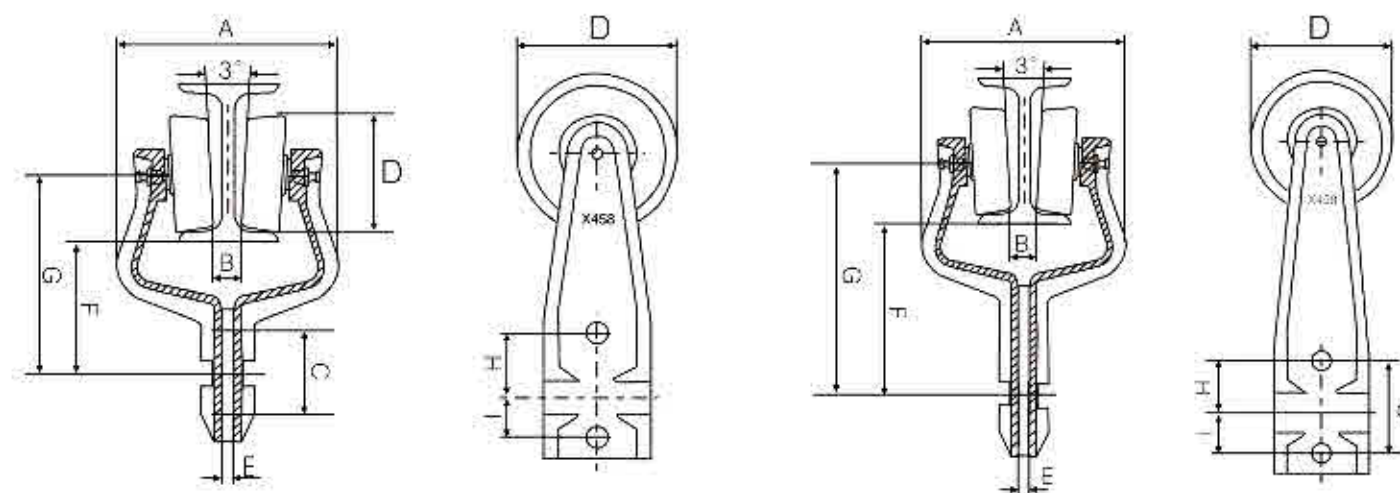
X458



S458

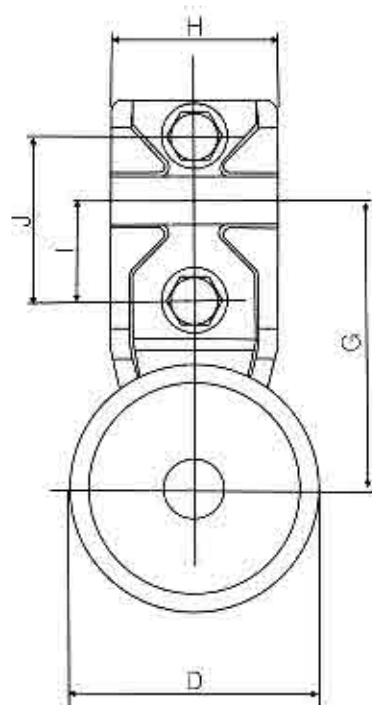
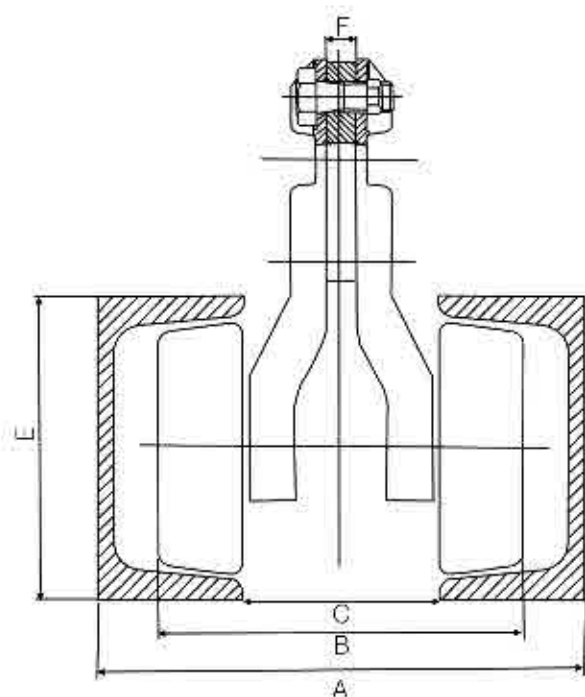


链号 Chain Number	节距 Pitch	销轴直径 Pin dia.	销轴长度 Pin Length	链件参数 Chain Shaft Dimensions						抗拉强度 Ultimate tensile strength
				A	B	C	E	F	G	
				mm	mm	mm	mm	mm	mm	
X458	102.4	16	57	36	17.5	25.4	27	16	10.5	210KN
S458	102.4	16	52	36	17.5	25.4	27	16	-	210KN



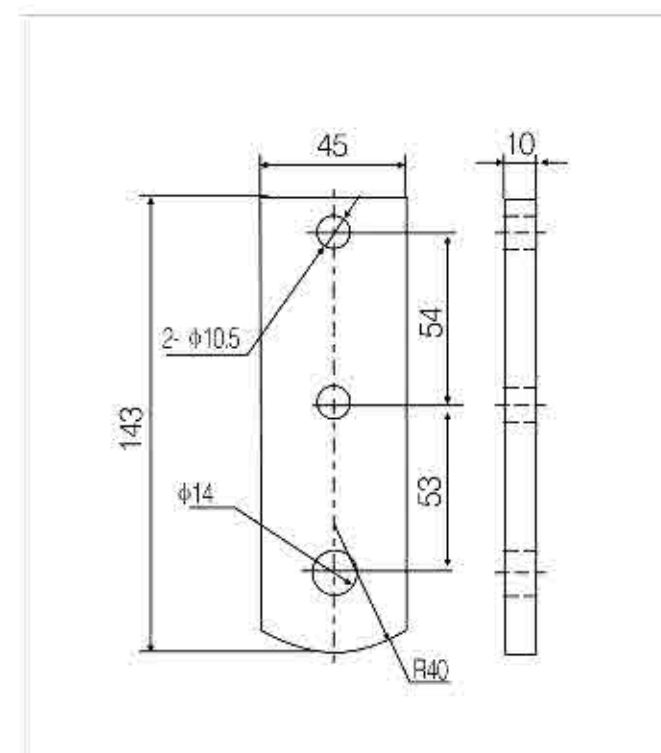
链号 Chain Number	链件参数 Chain Shaft Dimensions								
	A	B	C	D	E	F	G	H	I
	mm	mm	mm	mm	mm	mm	mm	mm	mm
X458 trolley	136	18	54	80	10	81	127	33.5	20.5
4" D8 trolley	136	18	54	80	10	104	150	33.5	20.5

X458 reverse trolley

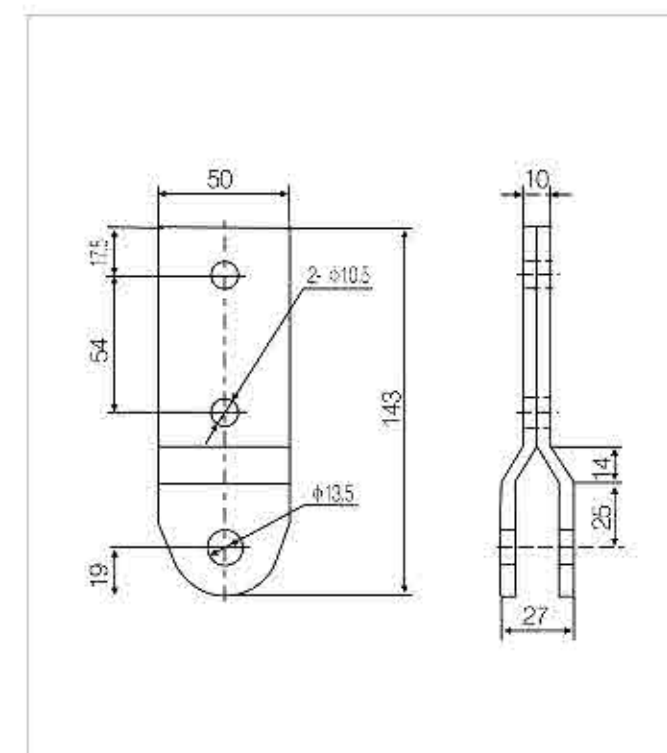


链号 Chain Number	链件参数 Chain Shaft Dimensions									
	A	B	C	D	E	F	G	H	I	J
	mm	mm	mm	mm	mm	mm	mm	mm	mm	mm
X458 reverse trolley	160	120	64	82	100	10	95	54	33	54

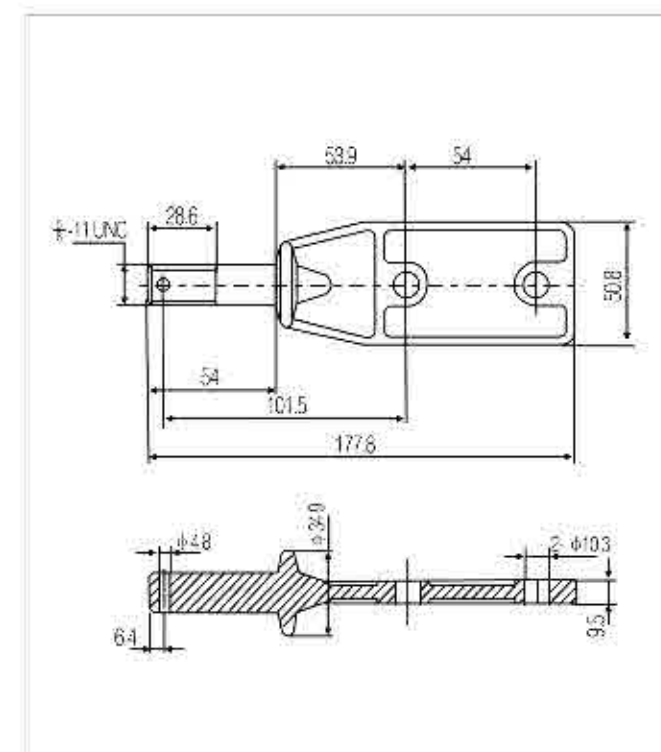
Attachments of X458



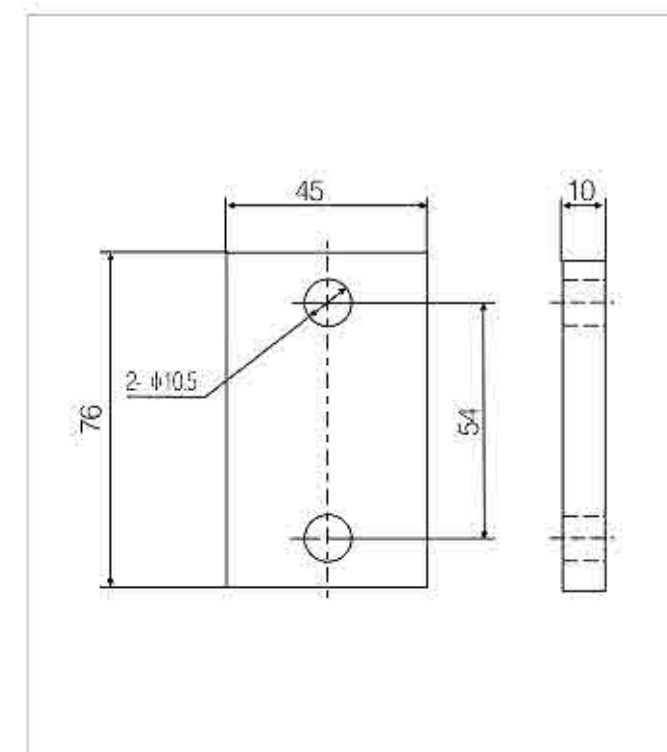
X458 "C" type



X458 "H" type

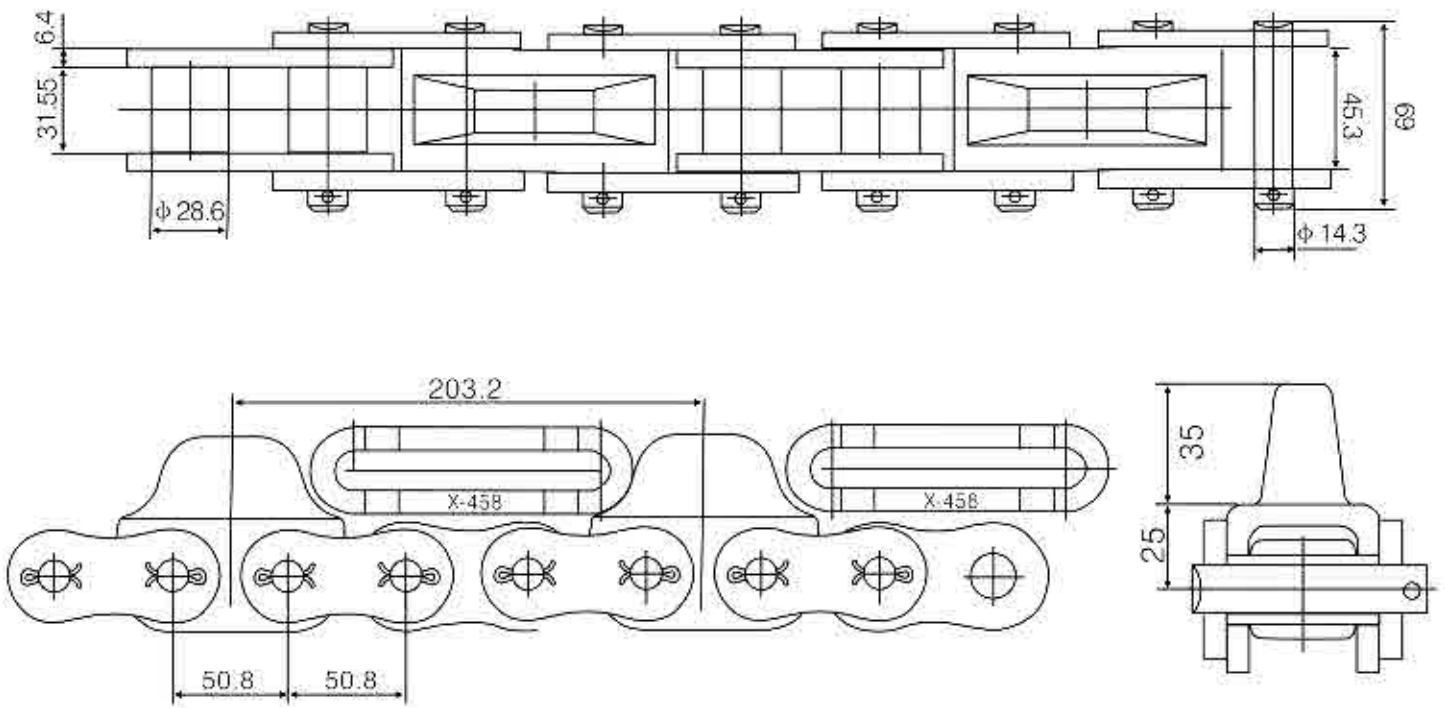


X458 "B" type



X458 "I" type

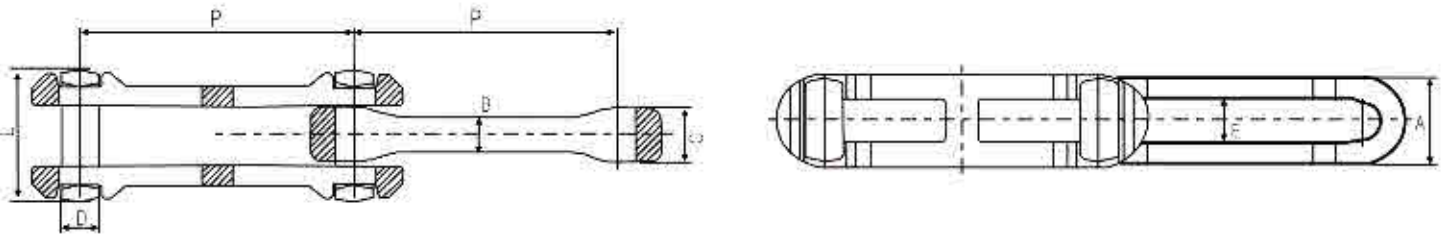
X458 driving chain



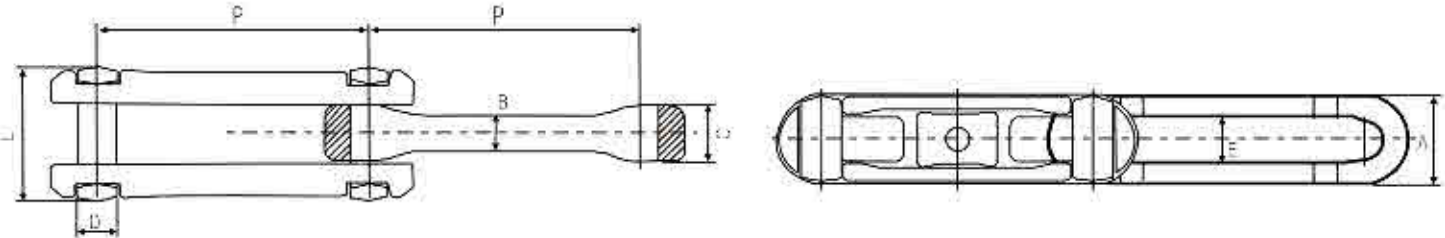
678 series



678

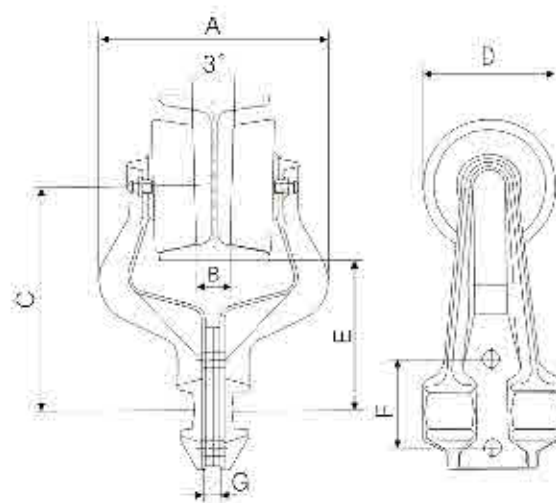


X678



链号 Chain Number	节距 Pitch	销轴直径 Pin dia.	销轴长度 Pin Length.	链件参数 Chain Shaft Dimensions				抗拉强度 Ultimate tensile strength
	P mm	D mm	L mm	A mm	B mm	C mm	E mm	Q KN
X678	153.2	22	77	50.8	21	32	25	380
678	153.2	22	77	50.8	21	32	25	380

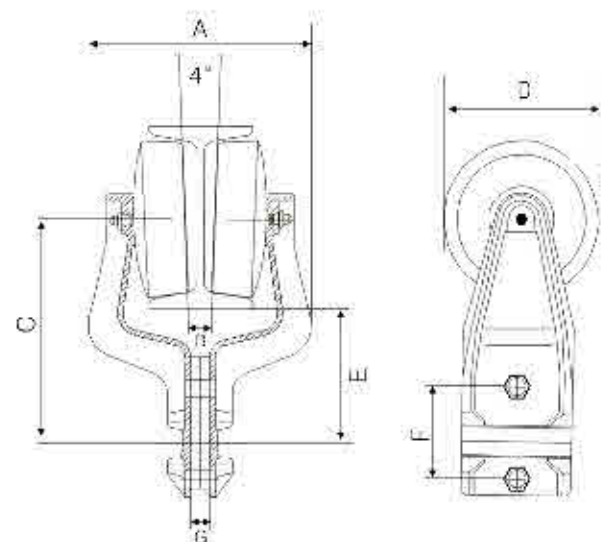
4x6" 6x6" trolley



链号
Chain
Number

链件参数
Chain Shaft Dimensions

	A	B	C	D	E	F	G
	mm	mm	mm	mm	mm	mm	mm
4x4"	142	18	136	82	90	54	12

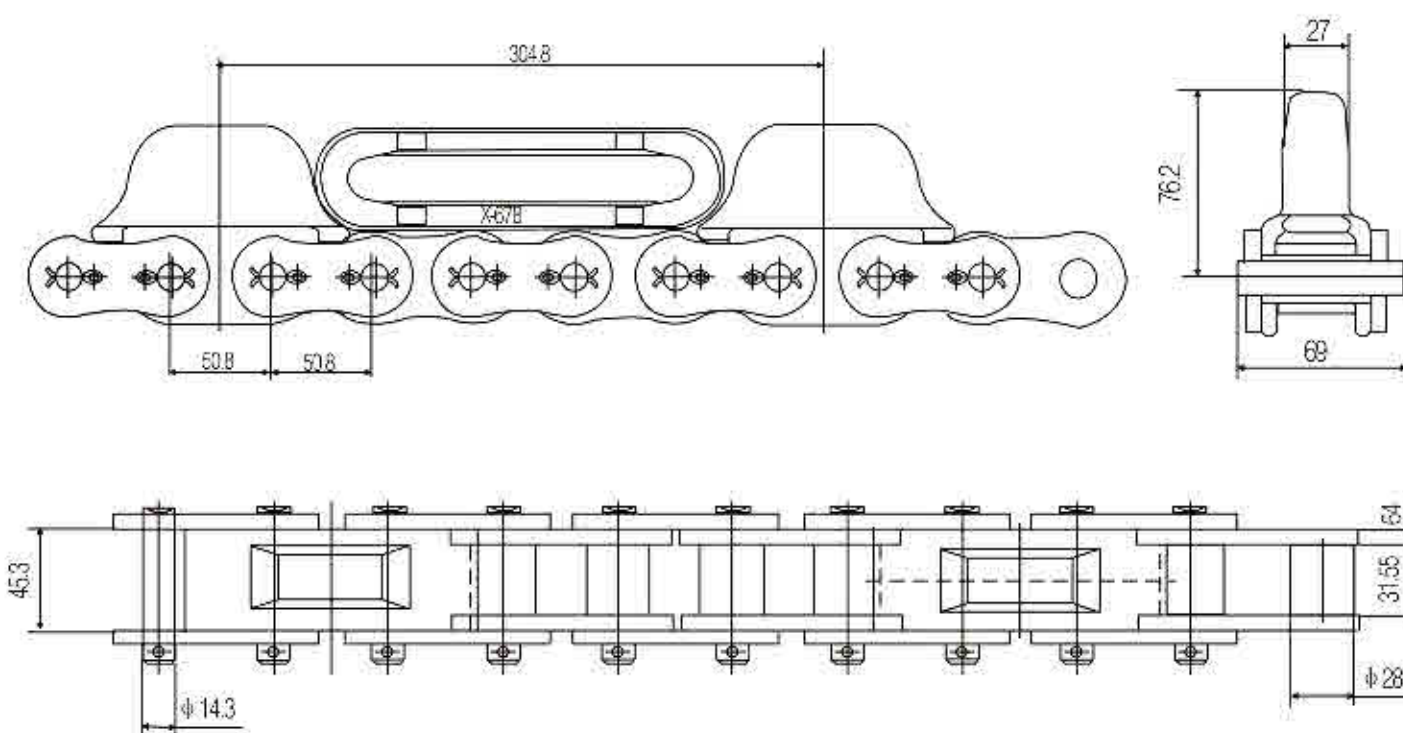


链号
Chain
Number

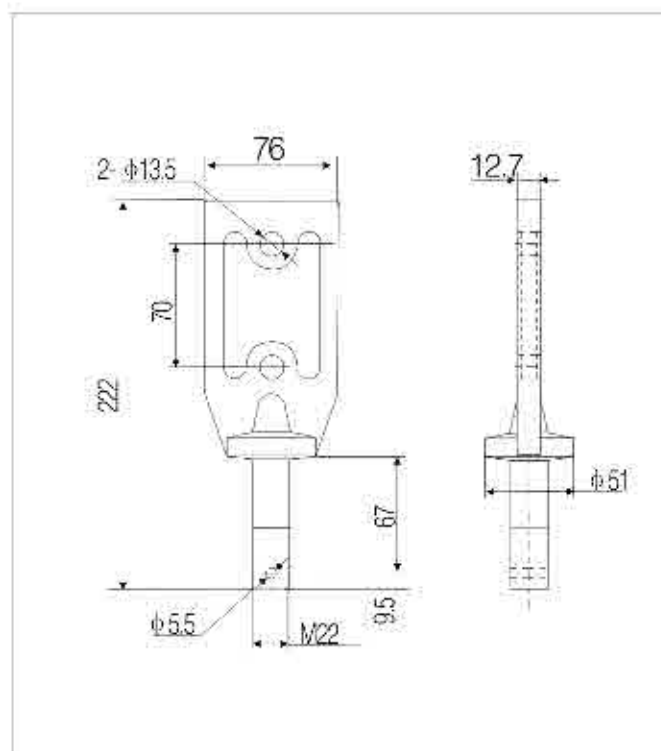
链件参数
Chain Shaft Dimensions

	A	B	C	D	E	F	G
	mm	mm	mm	mm	mm	mm	mm
6x6"	174	28	170	120	102	70	12

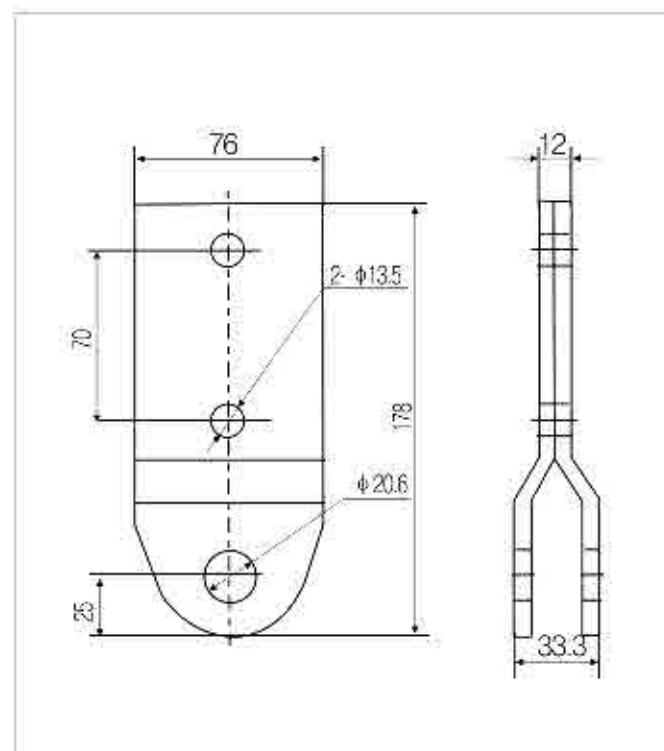
678 driving chain



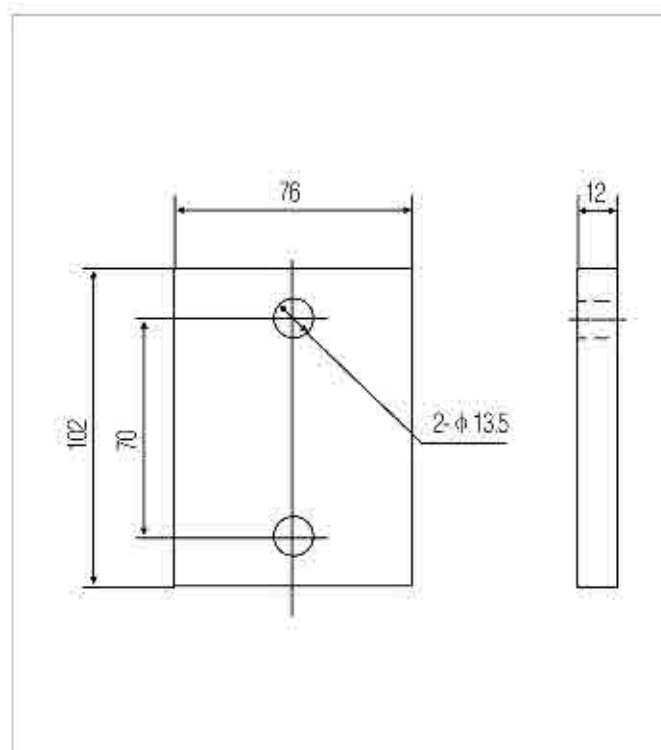
Attachments of X678



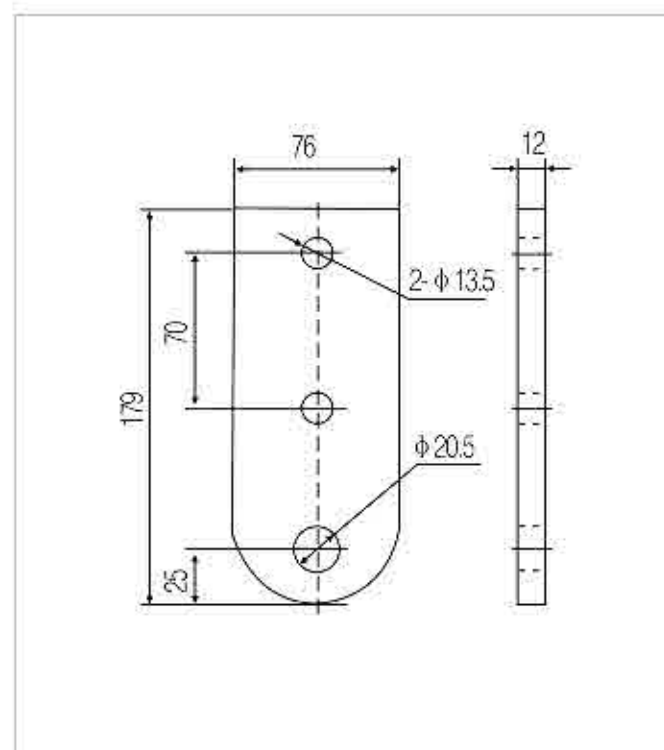
X458 "B" type



X458 "H" type

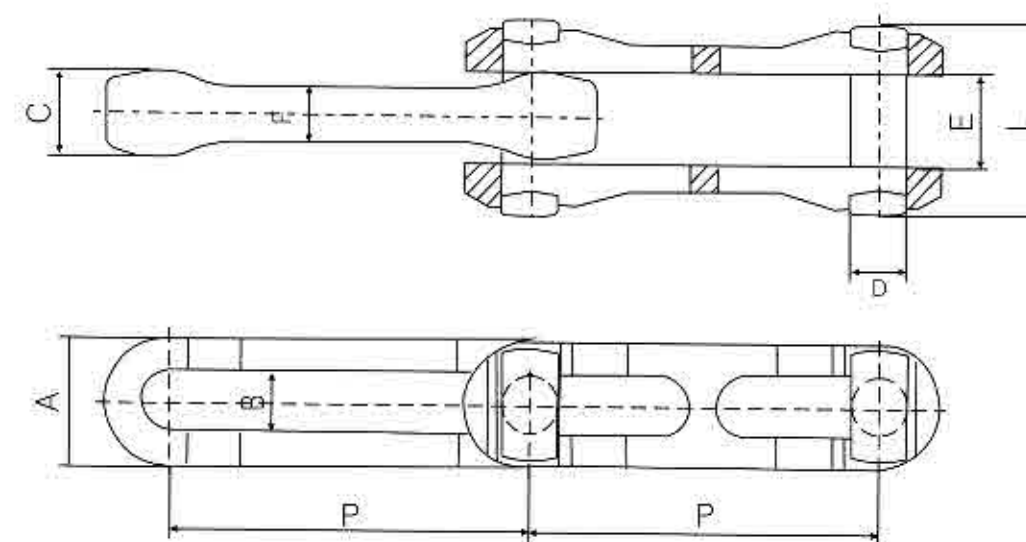


X458 "I" type



X458 "C" type

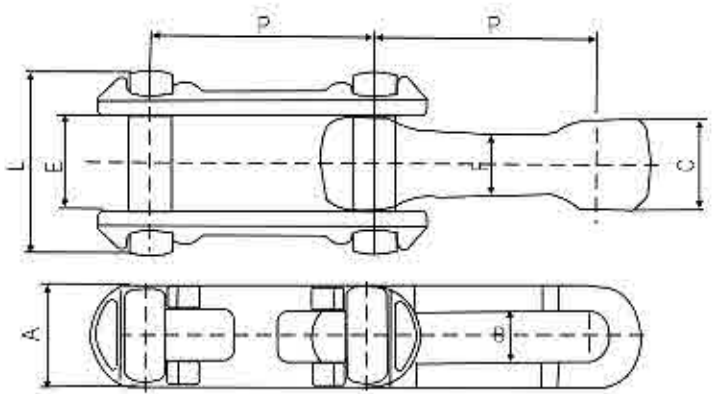
CC100



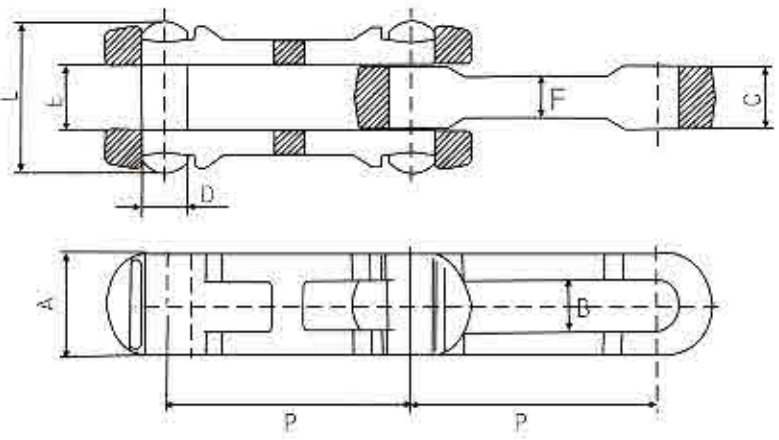
链号 Chain Number	节距 Pitch	销轴直径 Pin dia.	销轴长度 Pin Length.	锻件参数 Chain Shaft Dimensions					抗拉强度 Ultimate tensile strength
				A	B	C	E	F	
	P	D	L	mm	mm	mm	mm	mm	Kn
CC100	100	16	57	37	17.4	25	27	16	210



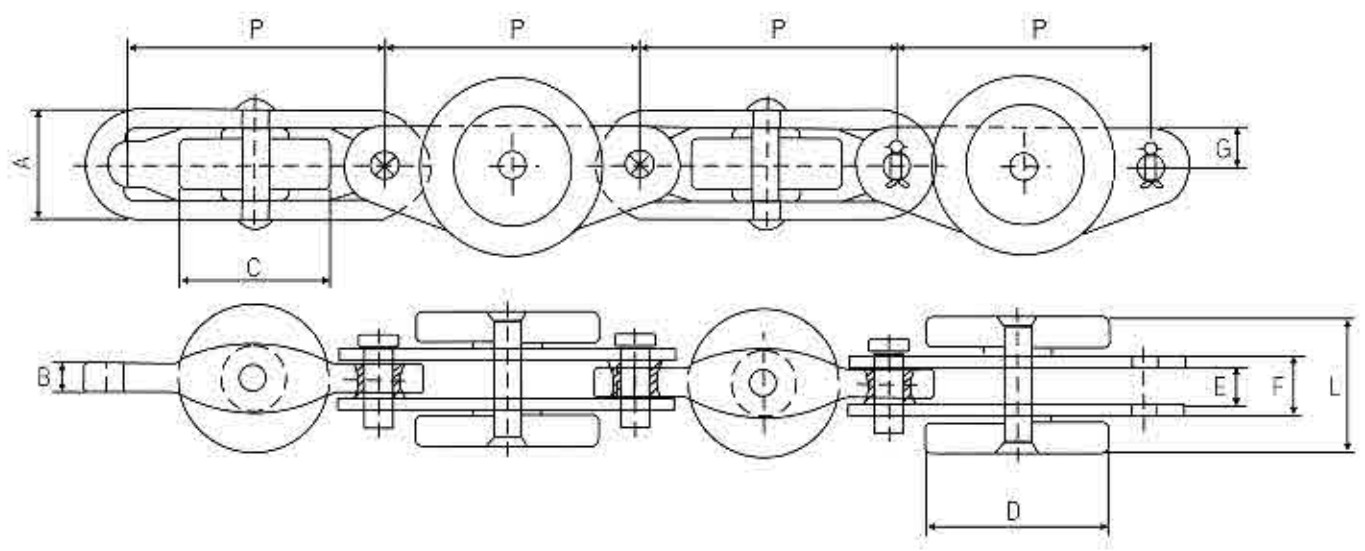
468



698



链号 Chain Number	节距 Pitch	销轴直径 Pin dia.	销轴长度 Pin Length.	锻件参数 Chain Shaft Dimensions					抗拉强度 Ultimate tensile strength
	P	D	L	A	B	C	E	F	Q
	mm	mm	mm	mm	mm	mm	mm	mm	Kn
468	102.4	19	84	47.8	22.2	41.3	43.3	29.5	310
698	153.2	28	95	64.5	32	39	42	25.4	510

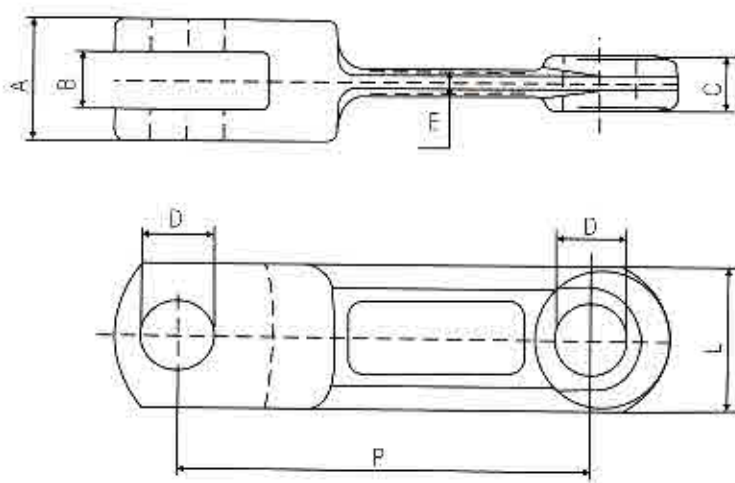


链号 Chain Number	节距 Pitch	销轴直径 Pin dia.	销轴长度 Pin Length.	锻件参数 Chain Shaft Dimensions					
	P	D	L	A	B	C	E	F	G
	mm	mm	mm	mm	mm	mm	mm	mm	mm
5075	75	54	40	33	8.5	44	12	18.4	12

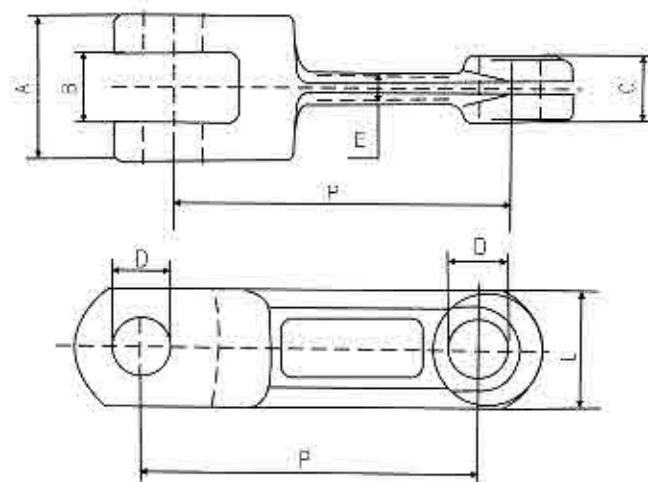
14228 drop forged link



14219



14228

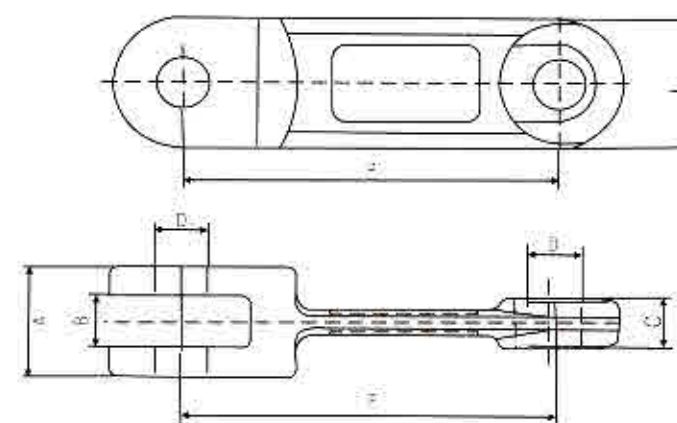


链号 Chain Number	节距 Pitch P mm	锻件参数 Chain Shaft Dimensions					
		D mm	L mm	A mm	B mm	C mm	E mm
14219	142	25.3	50	42	20	19	12
14228	142	25.3	50	62	30	28	15

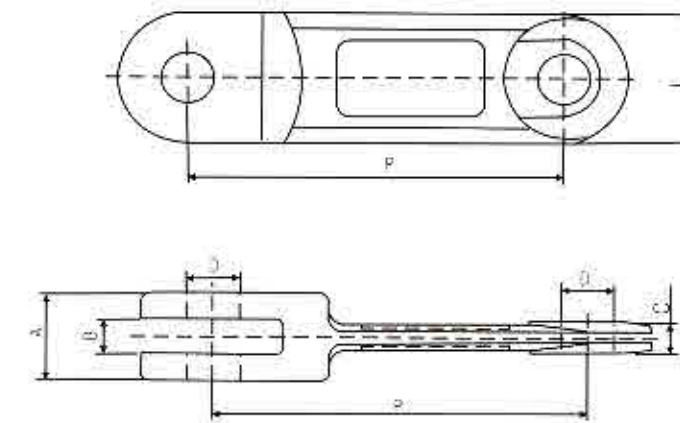
10160 drop forged link



10160-B



10160



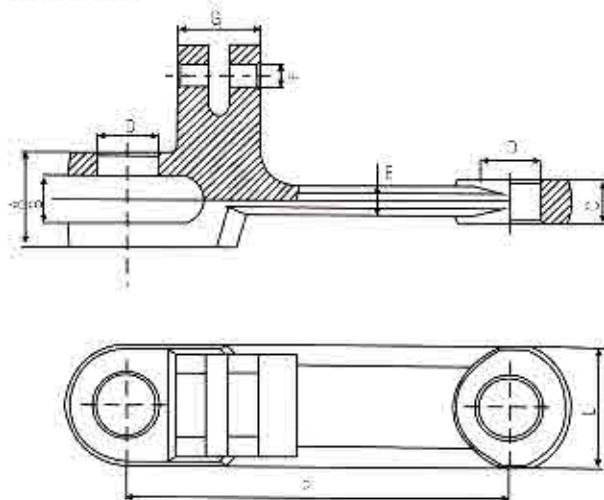
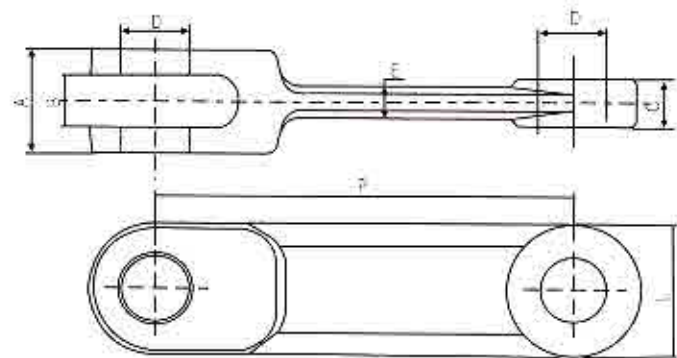
链号 Chain Number	节距 Pitch P mm	锻件参数 Chain Shaft Dimensions				
		D mm	L mm	A mm	B mm	C mm
10160-B	101.6	14.3	36	30	14.2	13
10160	101.6	14.3	36	24	9.5	8.5

20050 drop forged link



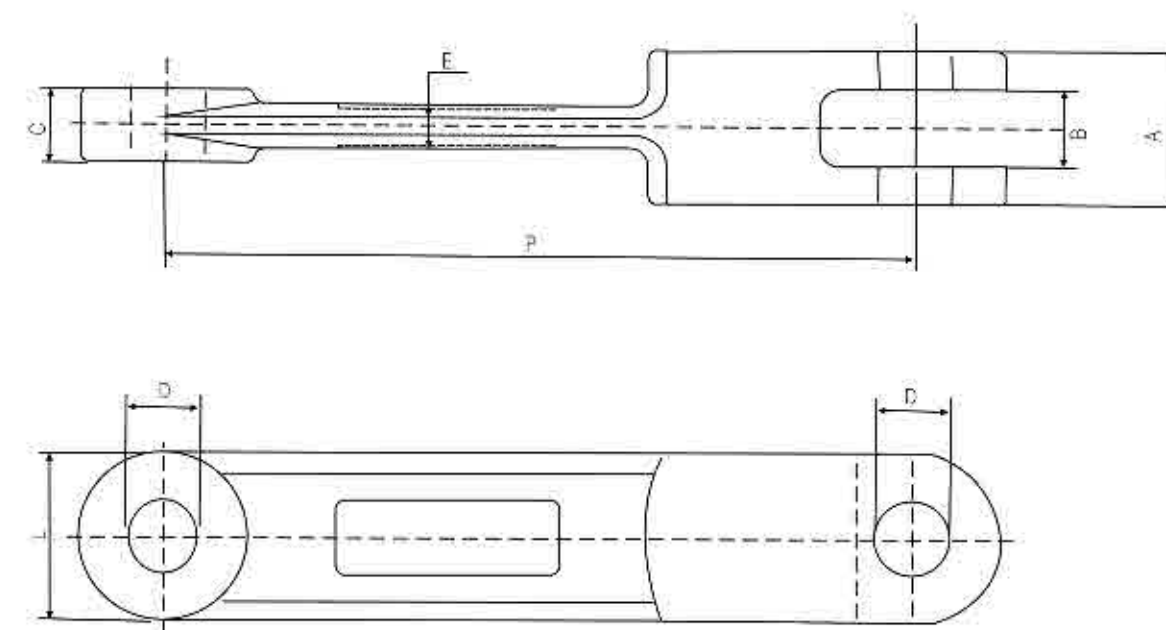
20050

20050U



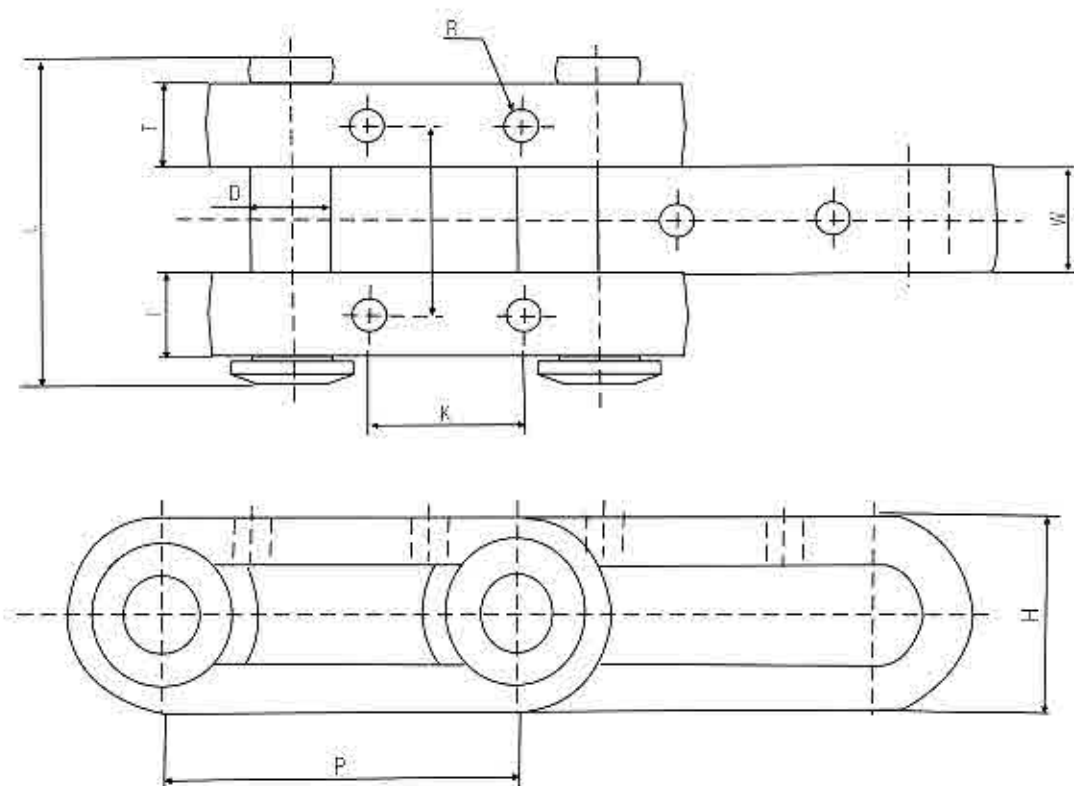
链号 Chain Number	节距 Pitch	锻件参数 Chain Shaft Dimensions							
	P	D	L	A	B	C	E	F	G
	mm	mm	mm	mm	mm	mm	mm	mm	mm
20050	200	32	64	50	25	23	15	-	-
20050U	200	32	64	50	25	23	15	13	43

20042 drop forged link



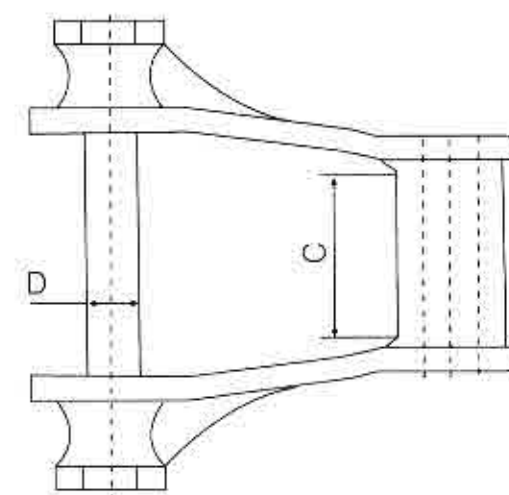
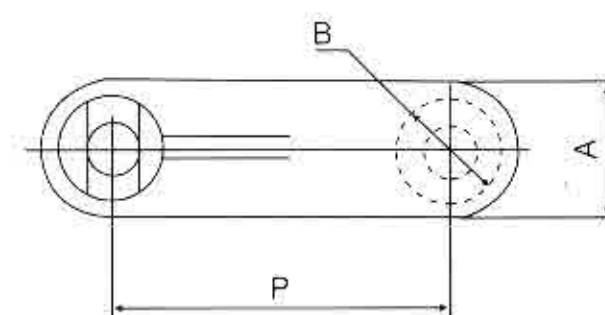
链号 Chain Number	节距 Pitch	锻件参数 Chain Shaft Dimensions					
	P	D	L	A	B	C	E
	mm	mm	mm	mm	mm	mm	mm
20042	200	20	45	42	21	20	12

20050 drop forged link



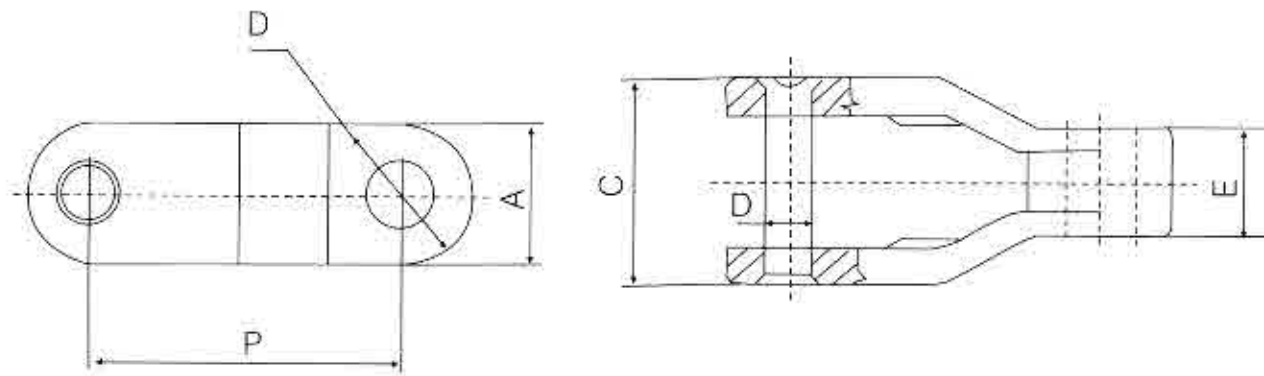
链号 Chain Number	Average pitch	Average ultimate strength	链件参数Chain Shaft Dimensions								Average Mase Kg/m
			Overall width A	Pin Dia. D	Width of Inner Link W	Width of Outer Link T	Height H	Hole pitch(A) F	Hole pitch(B) K	Hole Dia R	
152.4	152.4	34000	152.4	30	45	45	60	93	64	13	24.4
152.3	152.3	63000	152.4	39	50	40	80	90	76.4	17	43.8
228.6	228.6	71400	154.2	39	50	40	80	90	95	17	36.5

Casted chain

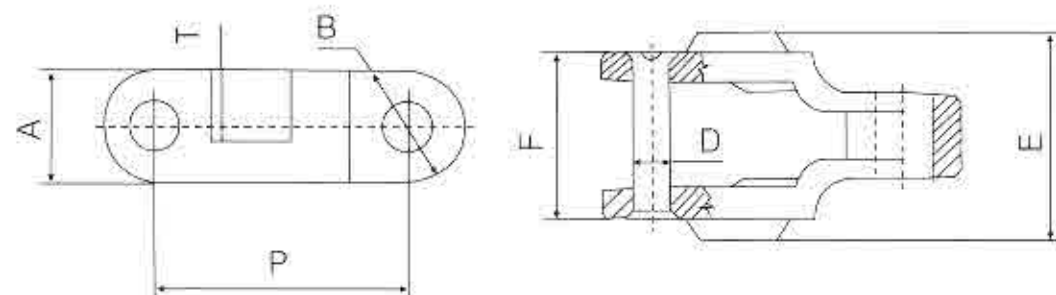


链号 Chain Number	pitch mm	A mm	B mm	C mm	D mm
567	58.92	26.9	24.6	19.05	9.65
578	66.8	30.2	24.6	22.4	11.2
503	76.7	35	27.7	28.7	14.2
504	103.1	42.9	33.2	44.45	16
500	153.4	38.1	28.7	38.1	16

Casted chain

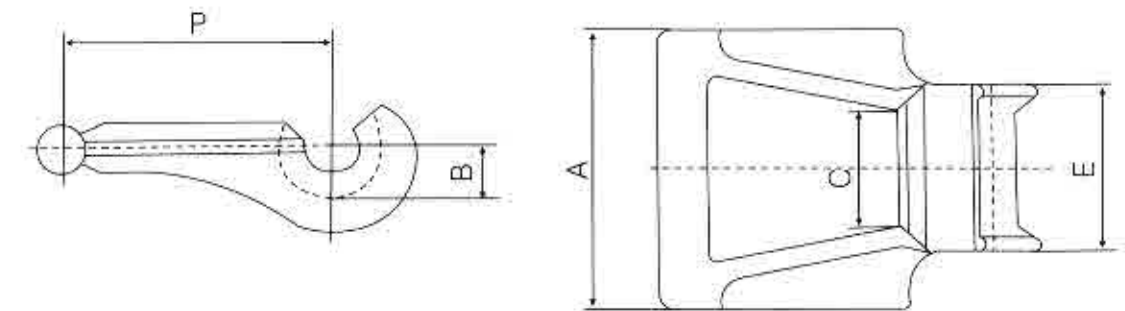


链号 Chain Number	pitch mm	A mm	B mm	C mm	D mm	E mm
CC600	63.5	30	29	44	11.1	23
CC625	64	30	29	44	11.1	23

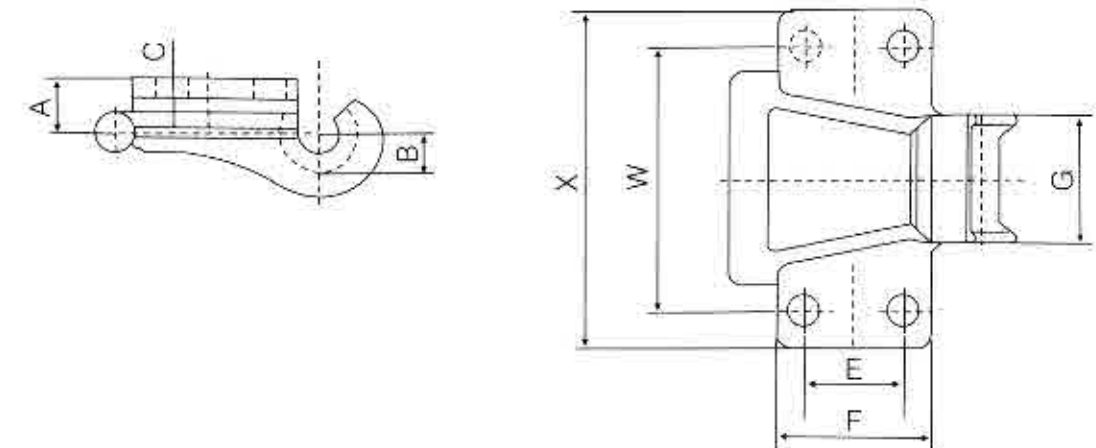


链号 Chain Number	pitch mm	A mm	B mm	T mm	D mm	E mm	F mm
CC600D	63.5	30	29	18	11.1	54	44

Casted chain

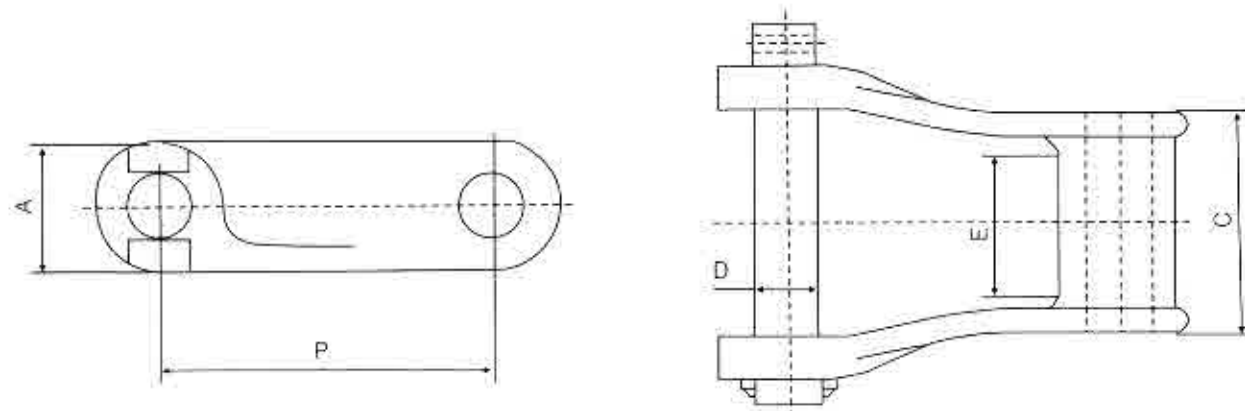


链号 Chain Number	pitch mm	A mm	B mm	C mm	E mm
103	78.11	83.5	15.2	32	48



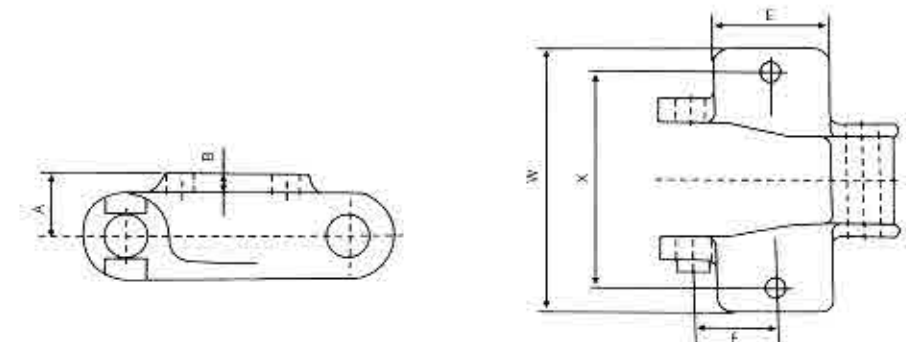
链号 Chain Number	pitch mm	A mm	B mm	C mm	E mm	F mm	G mm	W mm	X mm
103K2	78.11	20.7	15.2	7.9	38.1	60	48	105	132

Casted chain

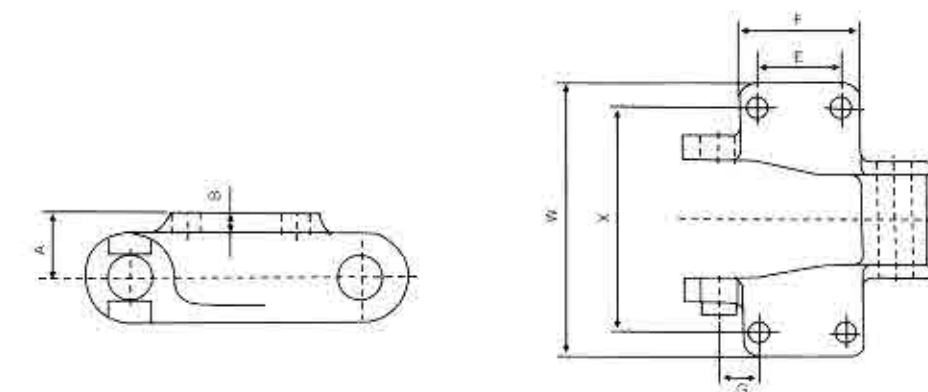


链号 Chain Number	pitch mm	A mm	C mm	D mm	E mm
H60	58.62	19	38	8	19
H78	66.27	28.5	76.7	12.7	28.5
H82	78.1	32	55	14	32
H110	152.4	38	270	19	23.5
H124	101.6	40	69	19	43

Casted chain

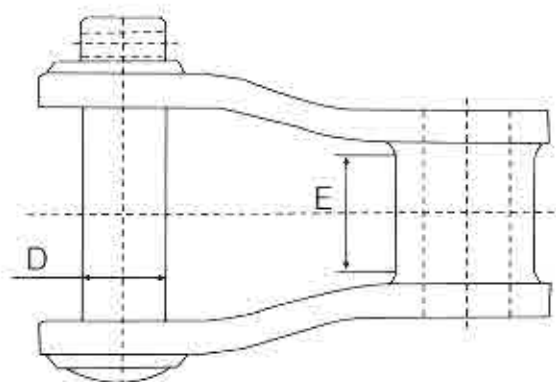
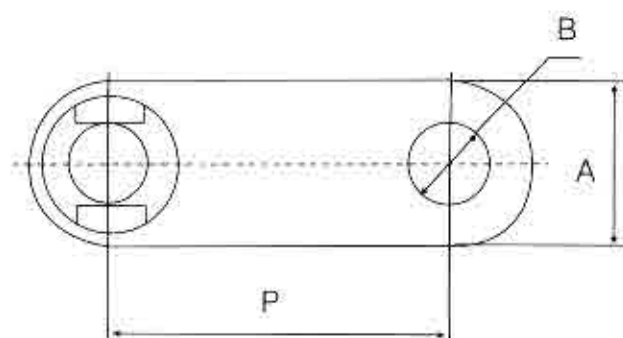


链号 Chain Number	pitch mm	A mm	B mm	E mm	F mm	X mm	W mm
H60	58.62	19.05	7.9	28.7	26.9	76.2	101.6
H74	66.27	17.5	7.9	28.7	31.8	73.2	98.6
H78	66.27	20.58	9.6	35	31.8	101.6	127
H124	101.6	30.2	9.6	73	48	133.4	162



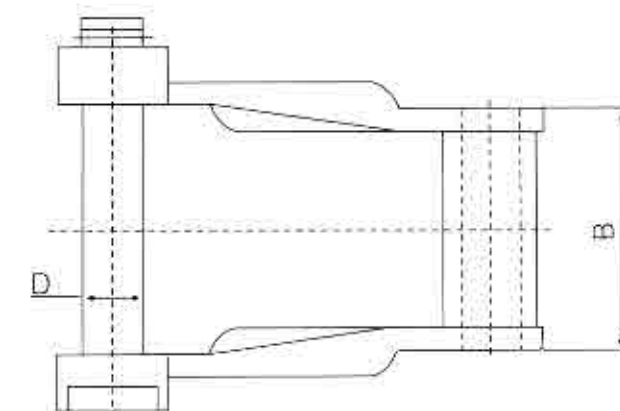
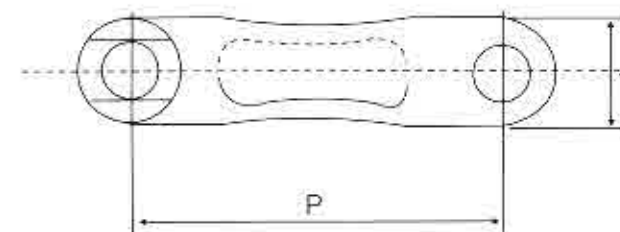
链号 Chain Number	pitch mm	A mm	B mm	E mm	F mm	X mm	W mm
H82	78.1	22.35	9.6	33.3	55.6	108	140
H124	101.6	30.2	9.6	49.3	73	133.4	162

Casted chain



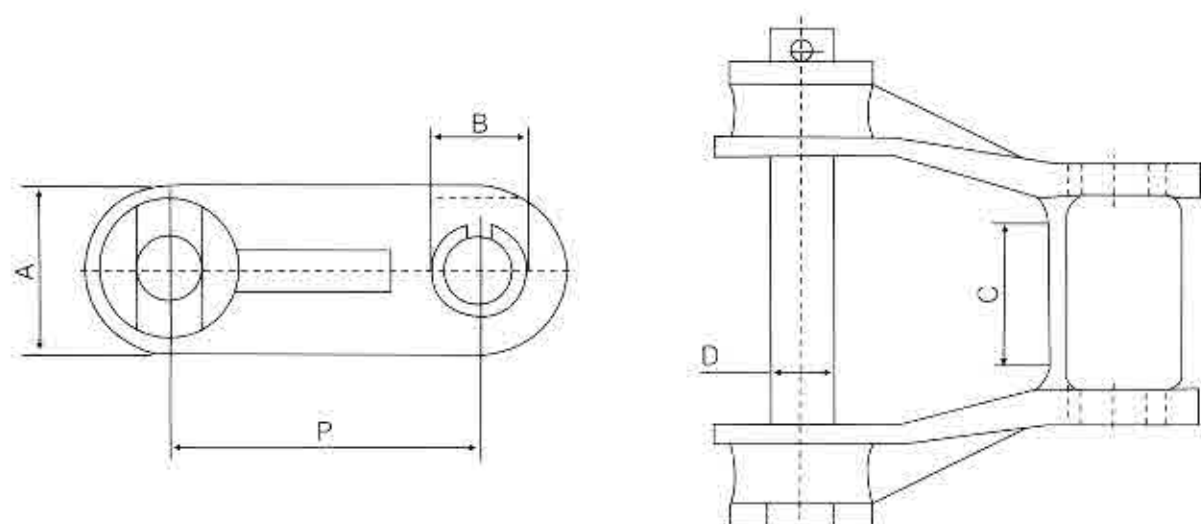
链号 Chain Number	pitch mm	A mm	B mm	D mm	E mm
442	34.92	19.05	14.2	7.9	16
445	41.4	19.05	16	7.9	17.5
452	38.25	21.35	17.5	9.65	16
455	41.4	21.35	16	9.65	17.5
462	41.5	23.9	18.3	11.1	20.6
467	58.62	19.8	16.8	7.9	19.05
477	58.62	25.4	20.6	11.1	17.5
488	66.27	25.4	22.4	11.1	19.05
4103	78.1	38.1	31.8	19.05	25.4

Casted chain



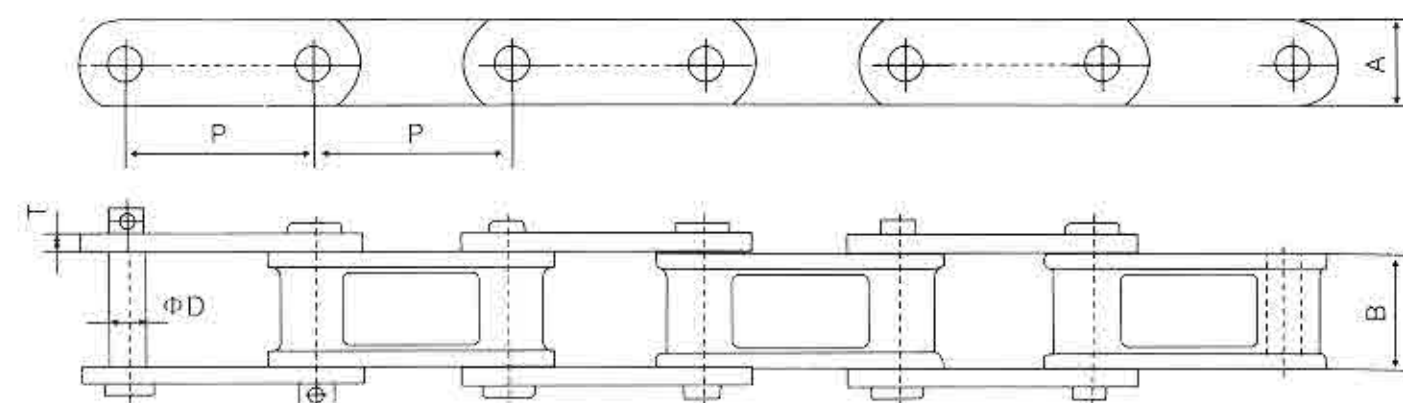
链号 Chain Number	pitch mm	A mm	B mm	D mm
710	119.6	35	77	17.5
720	152.4	38	47.6	17.5
720s	152.4	38	47.6	19
730	152.4	44	50	19

Casted chain



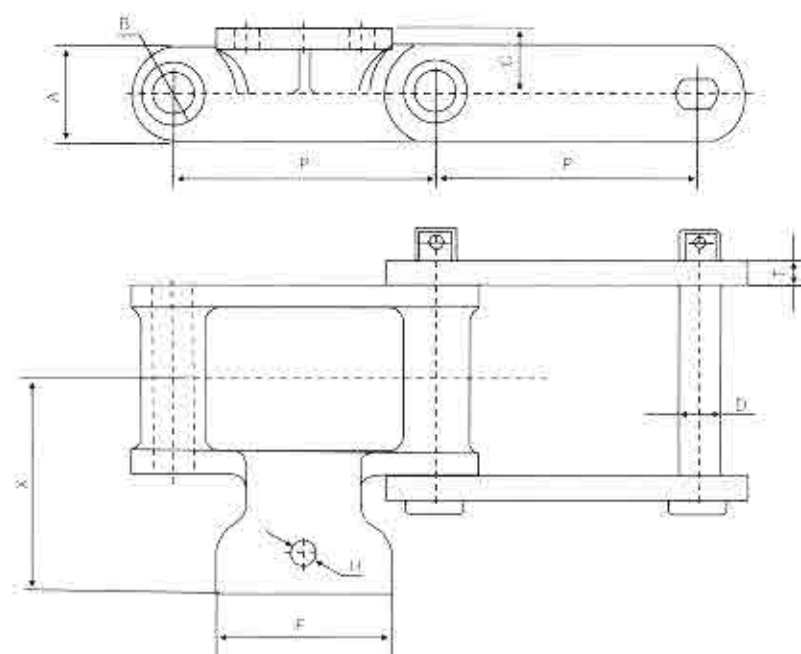
链号 Chain Number	pitch mm	A mm	B mm	C mm	D mm
600	153.41	54.1	28.7	44.45	17.52
603	76.2	39.6	22.35	28.7	14.22
604	101.6	50.8	25.4	50.8	16
704	103.1	54.1	44.45	57.15	20.5

Casted chain



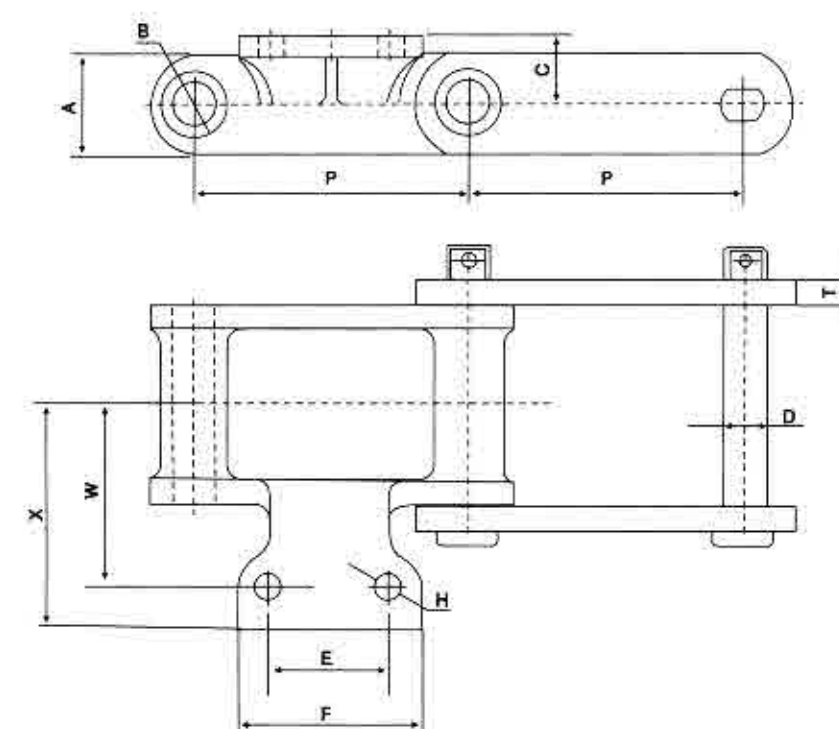
链号 Chain Number	pitch mm	A mm	B mm	D mm	T mm	MAX.Allow Load LBS	AVG.UT Strength LBS	Weight KG/FT
C55	41.42	19	32	9.5	4.8	1110	9000	0.97
C55L	41.42	19	32	10	4.8	1110	9000	1.25
C77	58.62	22	32	11.1	4.8	1360	11000	1.03
C188	66.27	29	39.6	12.7	5.8	1950	14000	1.6
C188L	66.27	29	39.6	14.3	5.8	1950	14000	1.6
C102B	101.6	38	73	16	9	4000	24000	2.85
C111	120.9	44	86	19	9	5950	36000	5.6
C131	78.1	38	52	16	9	3220	24000	3.3
C132	152.4	50.8	111	25.4	12	8330	50000	6.57

Casted chain



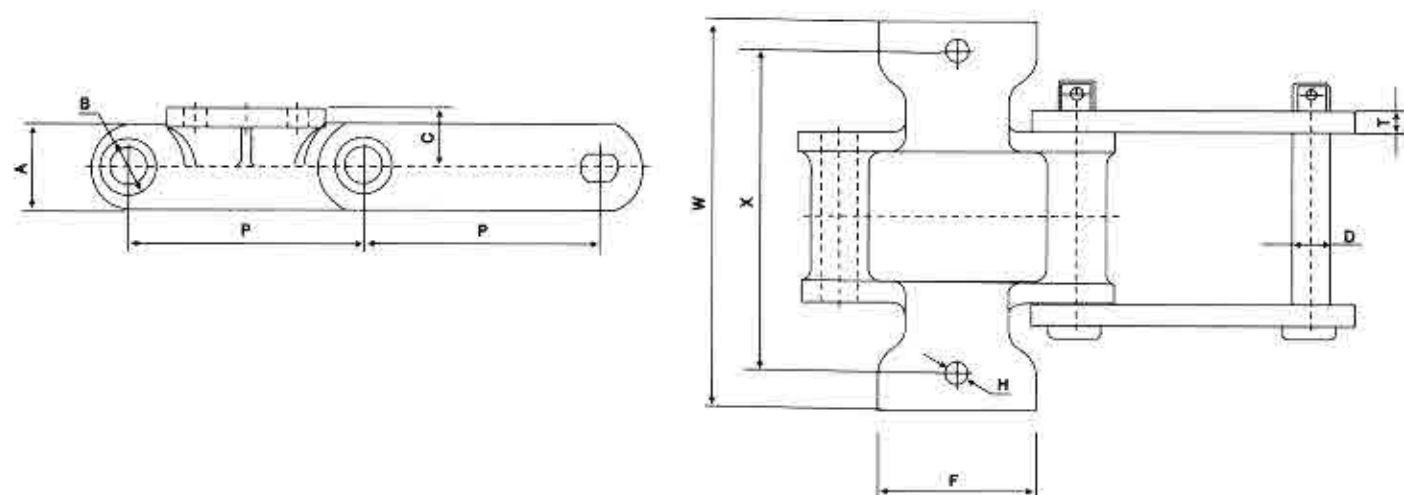
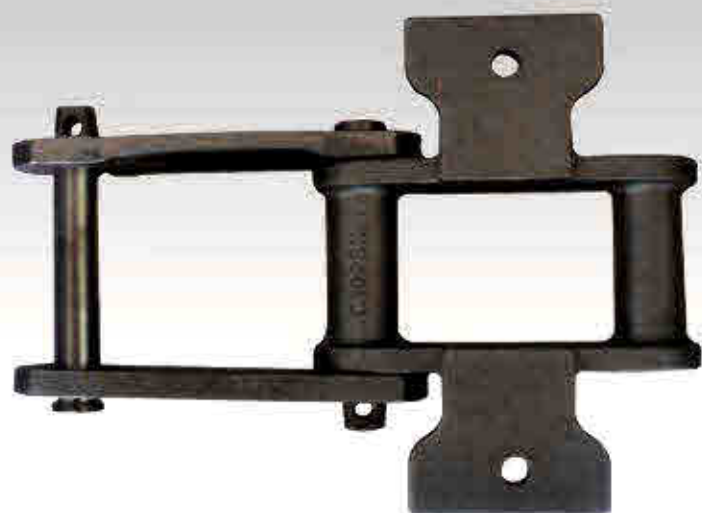
链号 Chain Number	pitch mm	A mm	B mm	C mm	D mm	F mm	T mm	X mm	W mm	H mm
C188	66.27	28.5	22.2	20.57	12.7	54.1	6.30	65	53.2	9.65
C131	78.1	38.1	31.75	25.4	15.88	66.8	9.52	66.5	52.45	12.7
C102B	101.6	38.1	25.4	25.4	15.88	68.32	9.65	85	67.4	9.65

Casted chain



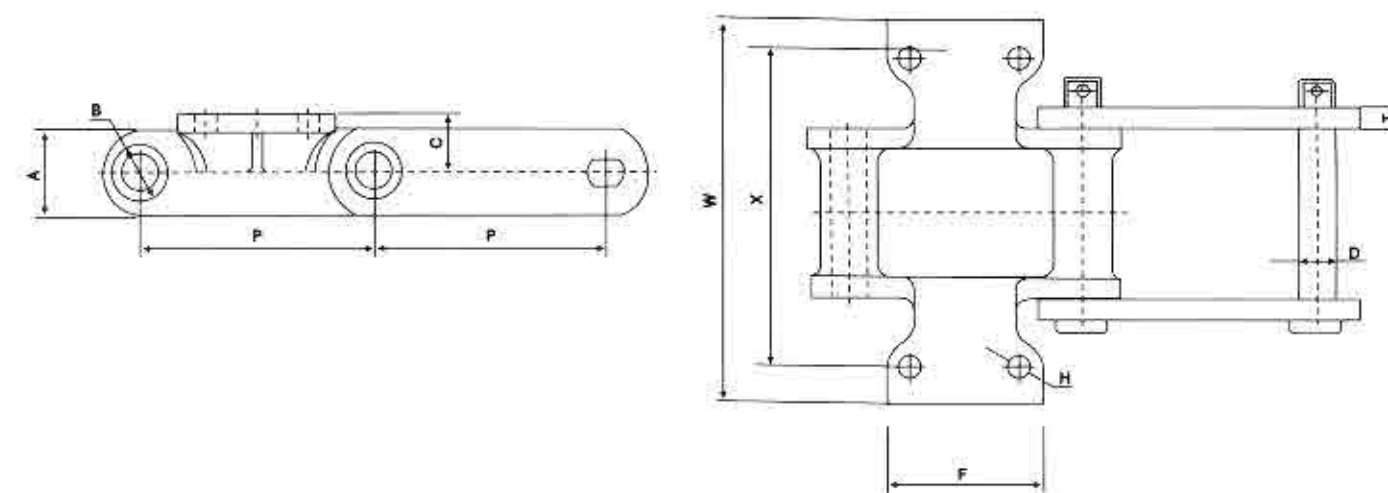
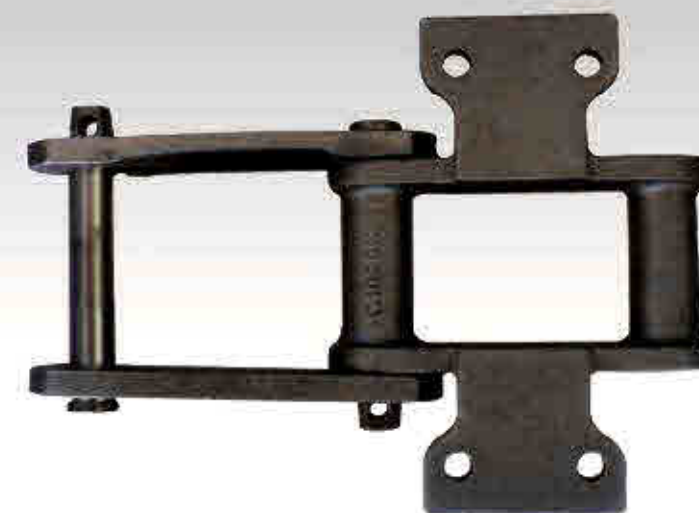
链号 Chain Number	pitch mm	A mm	B mm	C mm	D mm	E mm	F mm	T mm	X mm	W mm	H mm
C188	66.27	28.5	22.2	20.57	12.7	31.75	54.1	6.30	65	53.2	9.65
C131	78.1	38.1	31.75	25.4	15.88	38.1	66.8	9.52	66.5	52.45	12.7
C102B	101.6	38.1	25.4	25.4	15.88	44.45	68.32	9.65	85	67.4	9.65

Casted chain



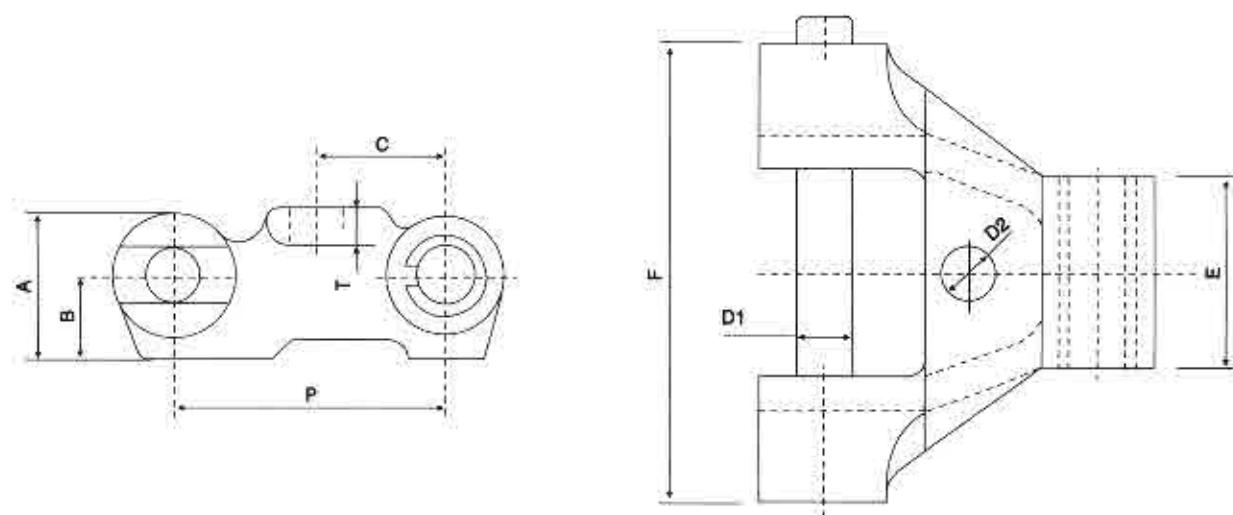
链号 Chain Number	pitch mm	A mm	B mm	C mm	D mm	F mm	T mm	X mm	W mm	H mm
C188	66.27	28.5	22.2	20.57	12.7	54.1	6.30	130	106.4	9.65
C131	78.1	38.1	31.75	25.4	15.88	66.8	9.52	133	104.9	12.7
C102B	101.6	38.1	25.4	25.4	15.88	68.32	9.65	170	134.8	9.65
C1021/2	102.62	44.45	34.9	25.4	19.05	71.37	9.65	165	134.8	12.7
C111	120.9	44.45	36.51	28.7	19.05	92.2	9.65	190	158.7	9.65
C110	152.4	38.1	32.54	25.4	15.88	72.9	9.65	170	134.8	9.65
C132	152.4	50.8	45.24	31.75	25.4	101.6	12.7	233	190.5	12.7

Casted chain



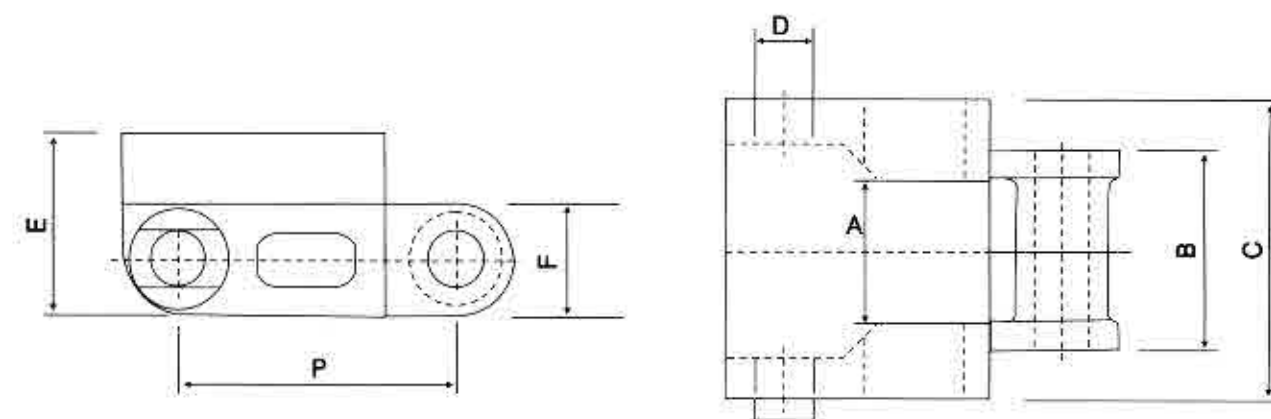
链号 Chain Number	pitch mm	A mm	B mm	C mm	D mm	E mm	F mm	T mm	X mm	W mm	H mm
C188	66.27	28.5	22.2	20.57	12.7	31.75	54.1	6.30	130	106.4	9.65
C131	78.1	38.1	31.75	25.4	15.88	38.1	66.8	9.52	133	104.9	12.7
C102B	101.6	38.1	25.4	25.4	15.88	44.45	68.32	9.65	170	134.8	9.65
C1021/2	102.62	44.45	34.9	25.4	19.05	44.45	71.37	9.65	165	134.8	12.7
C111	120.9	44.45	36.51	28.7	19.05	58.67	92.2	9.65	190	158.7	9.65
C110	152.4	38.1	32.54	25.4	15.88	44.45	72.9	9.65	170	134.8	9.65
C132	152.4	50.8	45.24	31.75	25.4	69.85	101.6	12.7	233	190.5	12.7

Casted chain



链号 Chain Number	pitch mm	A mm	B mm	C mm	D1 mm	D2 mm	E mm	F mm	T mm
907-E51	80.5	42	24.5	38.1	15.8	16	57	136	9.1

Casted chain

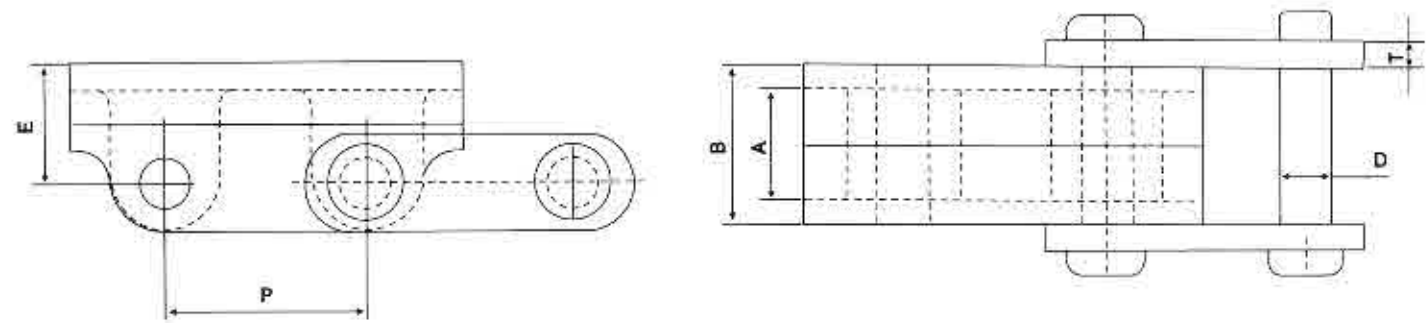


链号 Chain Number	pitch mm	A mm	B mm	C mm	D mm	E mm	F mm
H78A	66.27	28.6	47	71	12.7	43	25.4
H78B	66.27	28.6	47	71	12.7	43	25.4
H130	101.6	25.4	43	71	12.7	43	25.4
H138	101.6	25.4	43	71	12.7	43	25.4

Casted chain



Add: No.62 XingGang Rd,Changzhou,Jiangsu,China
Tel: +86-519-83978002 83900202
Fax: +86-519-83978999 86600406
E-mail: sales@amecco.com
Http: //www.amecco.com



链号 Chain Number	pitch mm	A mm	B mm	D mm	E mm	T mm
C55A	41.42	17.5	31	9.5	22	4.8
C55B	41.42	17.5	31	9.5	22	4.8
C55D	41.42	17.5	31	9.5	22	4.8