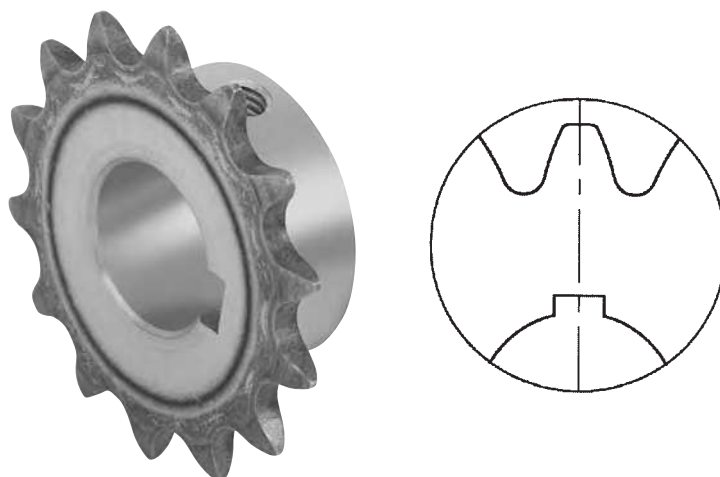


**Speciale Standard
Special Standard
Sonder-Standardteile
Standard Spécial
Estándar Especial**





N.B.
Pignoni **temprati ad induzione** sui denti (45 ÷ 55 HRC).
La sede linguetta è in asse con il dente.

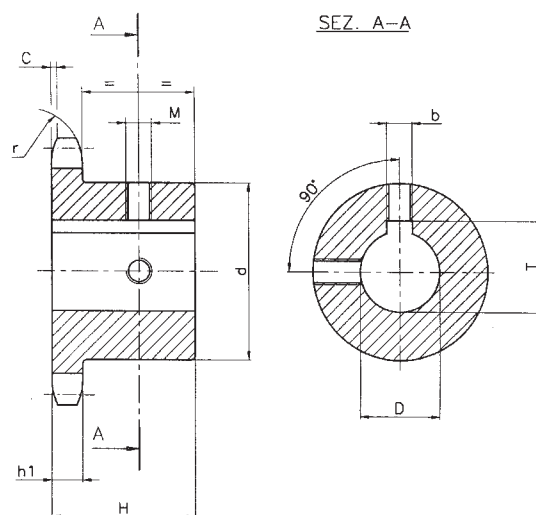
N.B.
Sprockets have **induction hardened** teeth (45 ÷ 55 HRC).
Keyway is located on center line of tooth.

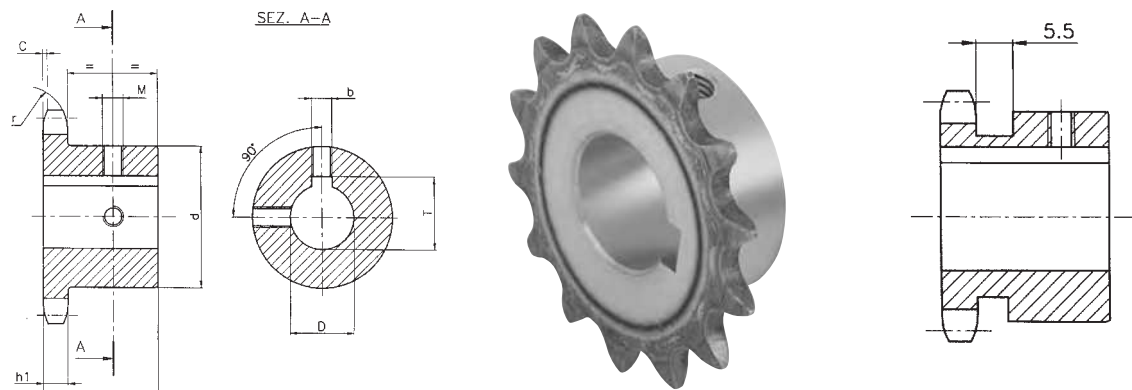
N.B.
Kettenraeder haben **induktionsgehaertete** Zaehne (45 ÷ 55 HRC).
Die Keilnut befindet sich auf Zahnmitte.

N.B.
Pignons ont denture **traitée par induction** (45 ÷ 55 HRC).
La rainure de clavette se trouve exactement en axe du dent.

N.B.
Piñones tienen dientes **templados por inducción** (45 ÷ 55 HRC).
La chaveta está exactamente en línea con el dente.

D (H7)	b (H9)	T		M
10	3	D + 1,4	(+0,1/0)	M3
11	4	D + 1,8	(+0,1/0)	M3
12	4	D + 1,8	(+0,1/0)	M3
14	5	D + 2,3	(+0,1/0)	M4
15	5	D + 2,3	(+0,1/0)	M4
16	5	D + 2,3	(+0,1/0)	M4
18	6	D + 2,8	(+0,1/0)	M5
19	6	D + 2,8	(+0,1/0)	M5
20	6	D + 2,8	(+0,1/0)	M5
22	6	D + 2,8	(+0,1/0)	M5
24	8	D + 3,3	(+0,2/0)	M6
25	8	D + 3,3	(+0,2/0)	M6
28	8	D + 3,3	(+0,2/0)	M6
30	8	D + 3,3	(+0,2/0)	M6
32	10	D + 3,3	(+0,2/0)	M8
35	10	D + 3,3	(+0,2/0)	M8
38	10	D + 3,3	(+0,2/0)	M8
40	12	D + 3,3	(+0,2/0)	M10
42	12	D + 3,3	(+0,2/0)	M10
45	14	D + 3,8	(+0,2/0)	M12
48	14	D + 3,8	(+0,2/0)	M12
50	14	D + 3,8	(+0,2/0)	M12
60	18	D + 4,4	(+0,2/0)	M12
65	18	D + 4,4	(+0,2/0)	M12
70	20	D + 4,9	(+0,2/0)	M12





3/8" x 7/32"

Versione (*) / Type (*) / Typ (*) / Tipo (*)

06B-1 9,525 x 5,72 mm

DIN 8187 ISO/R606

CATENA	CHAIN	KETTE	CHAÎNE	CADENA	ISO mm
Passo	Pitch	Teilung	Pas	Paso	9,525
Larghezza interna	Internal width	Innere Breite	Largeur interieure	Ancho interno	5,720
Rullo ø	Roller ø	Rollen ø	ø du rouleau	Rodillo ø	6,350

PIGNONE	SPROCKETS	KETTENRÄDER	PIGNONS	PIÑONES	
Raggio dente r	Tooth radius r	Radius r	Rayon de denture r	Radio diente r	r 10,0
Larghezza raggio C	Radius width C	Breite C	Largeur de rayon C	Ancho radio C	C 1,0
Largh. Dente h ₁	Tooth width h ₁	Zahnbreite h ₁	Larg. de denture h ₁	Ancho diente h ₁	h₁ 5,3

b-T-M pag. / page 19

**Materiale C 45 E
UNI EN 10083-1**

**Material C 45 E
UNI EN 10083-1**

**Werkstoff C 45 E
UNI EN 10083-1**

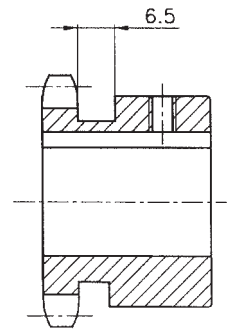
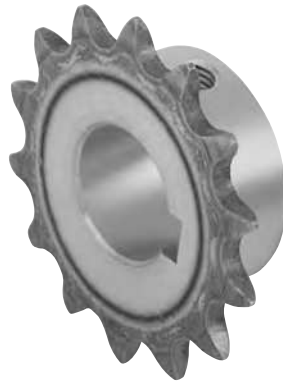
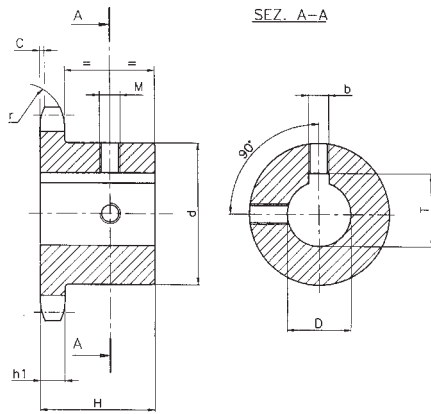
**Matière C 45 E
UNI EN 10083-1**

**Material C 45 E
UNI EN 10083-1**

Cod.	Z	D	H	d
05SA010	10	10	22	24*
05SA110		11		
05SA210		12		
05SA410	11	14	25	29*
05SA011		10		
05SA211		12		
05SA411	12	14	25	29*
05SA511		15		
05SA611		16		
05SA012	13	10	25	29*
05SA212		12		
05SA412		14		
05SA512	14	15	25	30*
05SA612		16		
05SA013		10	25	31*
05SA213	15	12		
05SA413		14		
05SA513	16	15	28	31*
05SA613		16		
05SA813		18		
05SA214	17	12	25	31
05SA414		14		
05SA514		15		
05SA614	18	16	25	35*
05SA814		18		
05SA914		19		
05SA215	19	12	25	34
05SA415		14		
05SA515		15		
05SA615	20	16	28	37
05SA815		18		
05SA915		19		
05SB015	21	20	28	38*
05SB215		22		
05SB415		24		
05SB515	22	25	28	42*
05SA216		12		
05SA416		14		
05SA516	23	15	30	31*
05SA616		16		
05SA816		18		
05SA916	24	19	28	34
05SB016		20		
05SB216		22		

Cod.	Z	D	H	d
05SB416	16	24	28	42*
05SB516		25		
05SA217		12		
05SA417	17	14	28	40
05SA517		15		
05SA617		16		
05SA817	18	18	28	43
05SA917		19		
05SB017		20		
05SB217	19	22	28	45
05SB417		24		
05SB517		25		
05SA218	20	12	28	46
05SA418		14		
05SA518		15		
05SA618	21	16	28	48
05SA818		18		
05SA918		19		
05SB018	22	20	28	46
05SB218		22		
05SB418		24		
05SB518	23	25	28	45
05SA219		12		
05SA419		14		
05SA519	24	15	30	31*
05SA619		16		
05SA819		18		
05SA919	25	19	28	34
05SB019		20		
05SB219		22		
05SB419	26	24	28	46
05SB519		25		
05SA220		12		
05SA420	27	14	28	48
05SA520		15		
05SA620		16		
05SA820	28	18	28	46
05SA920		19		
05SB020		20		
05SB220	29	22	28	46
05SB420		24		
05SB520		25		
05SA521	30	15	28	48
05SA621		16		

Cod.	Z	D	H	d
05SA821	21	18	28	48
05SA921		19		
05SB021		20		
05SB221	22	22	28	50
05SB421		24		
05SB521		25		
05SA522	23	15	28	52
05SA622		16		
05SA822		18		
05SA922	24	19	28	54
05SB022		20		
05SB222		22		
05SB422	25	24	28	57
05SB522		25		
05SA523		15	30	31*
05SA623	26	16		
05SA823		18		
05SA923	27	19	28	34
05SB023		20		
05SB223		22		
05SB423	28	24	28	46
05SB523		25		
05SA524		15	30	31*
05SA624	29	16		
05SA824		18		
05SA924	30	19	28	34
05SB024		20		
05SB224		22		
05SB424	31	24	28	46
05SB524		25		
05SA625		16	30	31*
05SA825	32	18		
05SA925		19		
05SB025	33	20	28	46
05SB225		22		
05SB425		24		
05SB525	34	25	28	46
05SB030		20		
05SB230		22		
05SB430	35	24	30	31*
05SB530		25		
05SB830		28		
05SC030	36	30	30	60



1/2" x 5/16"

Versione (*) / Type (*) / Typ (*) / Tipo (*)

08B-1 12,7 x 7,75 mm

DIN 8187 ISO/R606

CATENA	CHAIN	KETTE	CHAÎNE	CADENA	ISO mm
Passo	Pitch	Teilung	Pas	Paso	12,7
Larghezza interna	Internal width	Innere Breite	Largeur interieure	Ancho interno	7,8
Rullo ø	Roller ø	Rollen ø	ø du rouleau	Rodillo ø	8,5

PIGNONE	SPROCKETS	KETTENRÄDER	PIGNONS	PIÑONES	
Raggio dente r	Tooth radius r	Radius r	Rayon de denture r	Radio diente r	r 13,0
Larghezza raggio C	Radius width C	Breite C	Largeur de rayon C	Ancho radio C	C 1,3
Largh. Dente h ₁	Tooth width h ₁	Zahnbreite h ₁	Larg. de denture h ₁	Ancho diente h ₁	h ₁ 7,2

b-T-M pag. / page 19

Materiale C 45 E
UNI EN 10083-1

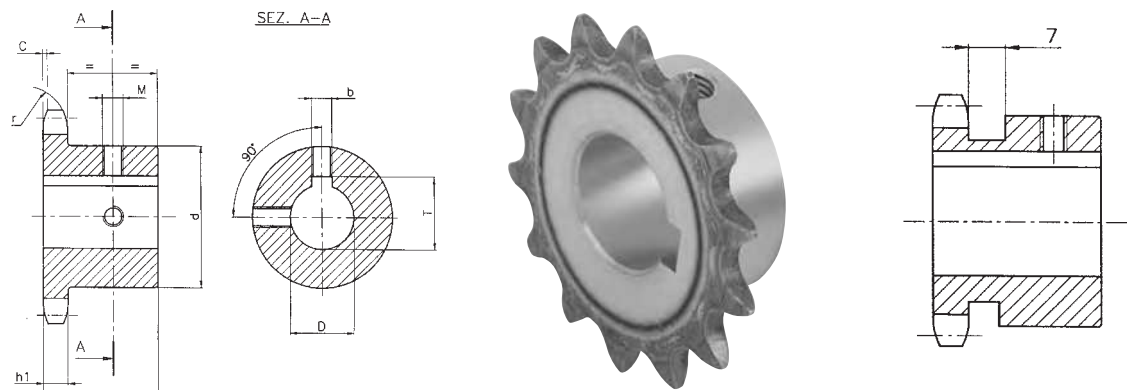
Material C 45 E
UNI EN 10083-1

Werkstoff C 45 E
UNI EN 10083-1

Matière C 45 E
UNI EN 10083-1

Material C 45 E
UNI EN 10083-1

Cod.	Z	D	H	d	Cod.	Z	D	H	d	Cod.	Z	D	H	d	Cod.	Z	D	H	d							
09SA210	10	12	25	26	09SA515	15	15	28	45	09SC818	18	38	28	56	09SB822	22	28	28	70							
09SA410		14		29*	09SA615		16			09SA619	16	09SC022	30													
09SA510		15		30*	09SA815		18			09SA819	18	09SC222	32													
09SA610		16		31*	09SA915		19			09SA919	19	09SC522	35													
09SA211	11	12	25	29	09SB015	15	20	28	45	09SB019	19	20	28	60	09SC822		38									
09SA411		14		30	09SB215		22			09SB219	22	09SA923	19													
09SA511		15		31	09SB415		24			09SB419	24	09SB023	20													
09SA611		16		34*	09SB515		25			09SB519	25	09SB223	22													
09SA811	12	18	28	35*	09SB815	16	28	28	50	09SB819	28	28	28	64	09SB423	24	24	28	70							
09SA911		19		47	09SC019		30			09SC019	30	09SB523	25													
09SA212		12		49*	09SC219		32			09SC219	32	09SB823	28													
09SA412		14			09SC519		35			09SC519	35	09SC023	30													
09SA512	13	15	28	33	09SA516	17	15	28	53*	09SC819	38				09SC223	32	32	28	70							
09SA612		16		38*	09SA616		16			09SA620	16	09SC523	35													
09SA812		18		41*	09SA816		18			09SA820	18	09SC823	38													
09SA912		19		42*	09SA916		19			09SA920	19	09SA924	19													
09SB012	14	20	28	36	09SB016	18	20	28	56	09SB020	20	20	28	68	09SB024	20	20	28	80							
09SB212		22		38*	09SB216		22			09SB220	22	09SB224	22													
09SB412		24		41*	09SB416		24			09SB420	24	09SB424	24													
09SB512		25		42*	09SB516		25			09SB520	25	09SB524	25													
09SA213	15	12	28	37	09SB816	20	28	28	59*	09SB820	28	28	28	70	09SB824	28	28	28	80							
09SA413		14		45*	09SC016		30			09SC020	30	09SC024	30													
09SA513		15		45*	09SC216		32			09SC220	32	09SC224	32													
09SA613		16		45*	09SA517		15			09SC520	35	09SC524	35													
09SA813	16	18	28	37	09SA617	21	16	28	60	09SC820	38				09SC824	38	38	28	80							
09SA913		19		42*	09SA817		18			09SA621	16	09SA925	19													
09SB013		20		45*	09SA917		19			09SA821	18	09SB025	20													
09SB213		22		45*	09SB017		20			09SA921	19	09SB225	22													
09SB413	17	24	28	42*	09SB217	22	24	28	62	09SB021	20	24	28	70	09SB425	24	24	28	80							
09SB513		25		45*	09SB417		24			09SB221	22	09SB525	25													
09SB813		28		45*	09SB517		25			09SB421	24	09SB825	28													
09SA214		12		41	09SB817		28			09SB022	20	09SC025	30													
09SA414	18	14	28	41	09SC017	25	30	28	70	09SB521	25	28	28	80	09SC025	30	30	30	80							
09SA514		15		41	09SC217		32			09SB821	28	09SC225	32													
09SA614		16		41	09SA618		16			09SC021	30	09SC525	35													
09SA814		18		41	09SA818		18			09SC221	32	09SC825	38													
09SA914	19	19	28	41	09SA918	22	19	28	70	09SC521	35				09SB530	25	25	30	80							
09SB014		20		41	09SB018		20			09SC821	38	09SB830	28													
09SB214		22		41	09SB218		22			09SA622	16	09SC030	30													
09SB414		24		41	09SB418		24			09SA822	18	09SC230	32													
09SB514	20	25	28	41	09SB518	26	25	28	70	09SA922	19	20	28	80	09SC530	35	35	30	80							
09SB814		28		45*	09SB818		28			09SB022	20	09SC830	38													
09SA215		12		45	09SC018		30			09SB222	22														30	80
09SA415		14		45	09SC218		32			09SB422	24															
					09SC518		35			09SB522	25															



5/8" x 3/8"

Versione (*) / Type (*) / Typ (*) / Tipo (*)

10B-1 15,875 x 9,65 mm

DIN 8187 ISO/R606

CATENA	CHAIN	KETTE	CHAÎNE	CADENA	ISO mm
Passo	Pitch	Teilung	Pas	Paso	15,875
Larghezza interna	Internal width	Innere Breite	Largeur interieure	Ancho interno	9,700
Rullo ø	Roller ø	Rollen ø	ø du rouleau	Rodillo ø	10,000

PIGNONE	SPROCKETS	KETTENRÄDER	PIGNONS	PIÑONES	
Raggio dente r	Tooth radius r	Radius r	Rayon de denture r	Radio diente r	r 16,0
Larghezza raggio C	Radius width C	Breite C	Largeur de rayon C	Ancho radio C	C 1,6
Largh. Dente h ₁	Tooth width h ₁	Zahnbreite h ₁	Larg. de denture h ₁	Ancho diente h ₁	h ₁ 9,1

b-T-M pag. / page 19

Materiale C 45 E
UNI EN 10083-1

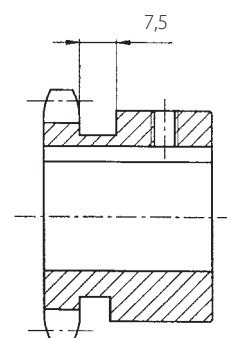
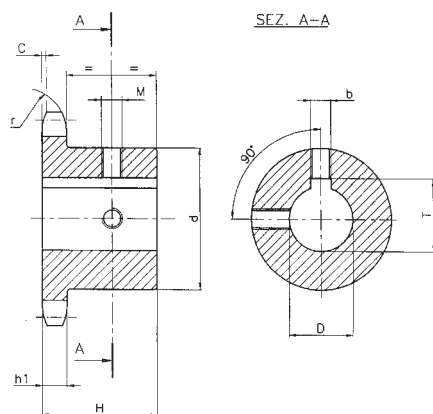
Material C 45 E
UNI EN 10083-1

Werkstoff C 45 E
UNI EN 10083-1

Matière C 45 E
UNI EN 10083-1

Material C 45 E
UNI EN 10083-1

Cod.	Z	D	H	d	Cod.	Z	D	H	d	Cod.	Z	D	H	d	Cod.	Z	D	H	d						
10SA510	10	15	25	35	10SB814	14	28	30	52	10SA919	19	19	30	70	10SC522	22	35	30	80						
10SA610		16			10SC014		30			10SB019		20			10SC822		38								
10SA910		19			10SC214		32			10SB219		22			10SD022		40								
10SB010		20			10SA915	19	10SB419	24	10SD222	42															
10SB410		24		10SB015	20	10SB519	25	10SA923	19																
10SA511	11	15	30	37	10SB215	15	22	30	57	10SB819	19	28	30	70	10SB023	23	20	30	80						
10SA611		16			10SB415		24			10SC019		30			10SB223		22								
10SA811		18			10SB515		25			10SC219		32			10SB423		24								
10SA911		19			10SB815		28			10SC519		35			10SB523		25								
10SB011		20			10SC015		30			10SC819		38			10SB823		28								
10SB411		24		10SC215	32	10SD019	40	10SC023	30																
10SB511		25		10SC515	35	10SD219	42	10SC223	32																
10SB811		28		10SA916	19	10SA920	19	10SC523	35																
10SC011		30		10SB016	20	10SB020	20	10SC823	38																
10SA512		12		15	30	42	10SB216	16	22	30		60	10SB8220	20	22		30			75	10SD023	24	40	30	80
10SA612	16		10SB416	24			10SB420		24		10SD223		42												
10SA812	18		10SB516	25			10SB520		25		10SA924		19												
10SA912	19		10SB816	28			10SB820		28		10SB024		20												
10SB012	20		10SC016	30			10SC020		30		10SB224		22												
10SB212	22		10SC216	32			10SC220	32	10SB424	24															
10SB412	24		10SC516	35			10SC520	35	10SB524	25															
10SB512	25		10SC816	38			10SC820	38	10SB824	28															
10SB812	28		10SA917	19			10SD020	40	10SC024	30															
10SC012	30		10SB017	20			10SD220	42	10SC224	32															
10SC212	32		10SB217	22		10SA921	19	10SC524	35																
10SA513	13		15	30		47	10SB417	17	24	30	60	10SB021	21		20	30	75	10SC824	25	38	30		80		
10SA613			16				10SB517		25			10SB221			22			10SD024		40					
10SA813			18				10SB817		28			10SB421			24			10SD224		42					
10SA913			19				10SC017		30			10SB521			25			10SA925		19					
10SB013		20	10SC217		32		10SB821		28			10SB025		20											
10SB213		22	10SC517		35	10SC021	30	10SB225	22																
10SB413		24	10SB817		38	10SC221	32	10SB425	24																
10SB513		25	10SA918		19	10SC521	35	10SB525	25																
10SB813		28	10SB018		20	10SC821	38	10SB825	28																
10SC013		30	10SB218		22	10SD021	40	10SC025	30																
10SC213	32	10SB418	24	10SD221	42	10SC225	32																		
10SA514	14	15	30	52	10SB518	18	25	30	70	10SA922	22	19	30	80	10SC525	25	35	30	80						
10SA614		16			10SB818		28			10SB022		20			10SC825		38								
10SA814		18			10SC018		30			10SB222		22			10SD025		40								
10SA914		19			10SC218		32			10SB422		24			10SD225		42								
10SB014		20			10SC518		35			10SB522		25													
10SB214		22			10SC818		38			10SB822		28													
10SB414		24			10SD018		40			10SC022		30													
10SB514		25			10SD218		42			10SC222		32													



3/4" x 7/16"

Versione (*) / Type (*) / Typ (*) / Tipo (*)

12B-1 19,05 x 11,68 mm

DIN 8187 ISO/R606

CATENA	CHAIN	KETTE	CHAÎNE	CADENA	ISO mm
Passo	Pitch	Teilung	Pas	Paso	19,05
Larghezza interna	Internal width	Innere Breite	Largeur interieure	Ancho interno	11,68
Rullo ø	Roller ø	Rollen ø	ø du rouleau	Rodillo ø	12,07

PIGNONE	SPROCKETS	KETTENRÄDER	PIGNONS	PIÑONES	
Raggio dente r	Tooth radius r	Radius r	Rayon de denture r	Radio diente r	r 19,0
Larghezza raggio C	Radius width C	Breite C	Largeur de rayon C	Ancho radio C	C 2,0
Largh. Dente h ₁	Tooth width h ₁	Zahnbreite h ₁	Larg. de denture h ₁	Ancho diente h ₁	h₁ 11,1

b-T-M pag. / page 19

Materiale C 45 E
UNI EN 10083-1

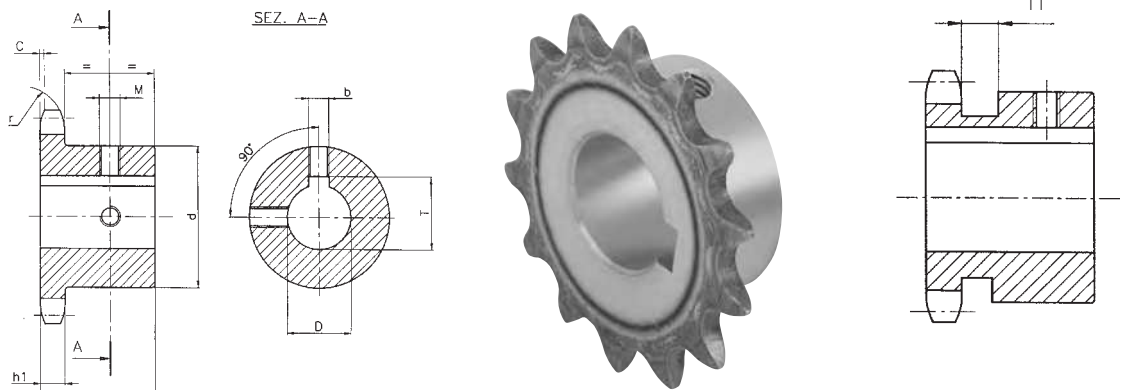
Material C 45 E
UNI EN 10083-1

Werkstoff C 45 E
UNI EN 10083-1

Matière C 45 E
UNI EN 10083-1

Material C 45 E
UNI EN 10083-1

Cod.	Z	D	H	d	Cod.	Z	D	H	d	Cod.	Z	D	H	d	Cod.	Z	D	H	d
11SA910	10	19	30	42	11SA915	15	19	35	70	11SD019	19	40	35	80	11SD023	23	40	40	90
11SB010		20			11SB015		20			11SD219		42			11SD223		42		
11SB410		24		45	11SB215		22			11SD519		45			11SD523		45		
11SB510		25			11SB415		24			11SD819		48			11SD823		48		
11SB810		28		47*	11SB515		25			11SE019		50			11SE023		50		
11SC010	11	30	35	49*	11SB815	16	28	35	75	11SB520	20	25	35	80	11SB524	24	25	40	90
11SC210		32		46	11SC015		30			11SB820		28			11SB824		28		
11SA911		19			11SC215		32			11SC020		30			11SC024		30		
11SB011		20		51	11SC515		35			11SC220		32			11SC224		32		
11SB411		24		53*	11SC815		38			11SC520		35			11SC524		35		
11SB511	12	25	35	52	11SD015	17	40	35	80	11SC820	21	38	40	90	11SC824	25	38	40	90
11SB811		28			11SA916		19			11SD020		40			11SD024		40		
11SC011		30		53	11SB016		20			11SD220		42			11SD224		42		
11SC211		32			11SB216		22			11SD520		45			11SD524		45		
11SA912		19		56	11SB416		24			11SD820		48			11SD824		48		
11SB012	13	20	35	58	11SB516	18	25	35	80	11SE020	22	50	40	90	11SE024		50		
11SB212		22			11SB816		28			11SB521		25			11SB525		25		
11SB412		24		53	11SC016		30			11SB821		28			11SB825		28		
11SB512		25			11SC216		32			11SC021		30			11SC025		30		
11SB812		28		56	11SC516		35			11SC221		32			11SC225		32		
11SC012	14	30	35	64	11SC816	19	38	35	80	11SC521	23	35	40	90	11SC525		35		
11SC212		32			11SD016		40			11SC821		38			11SC825		38		
11SC512		35		67	11SB517		25			11SD021		40			11SD025		40		
11SA913		19			11SB817		28			11SD221		42			11SD225		42		
11SB013		20		67	11SC017		30			11SD521		45			11SD525		45		
11SB213	15	22	35	64	11SC217	20	32	35	80	11SD821	25	48	40	90	11SD825		48		
11SB413		24			11SC517		35			11SE021		50			11SE025		50		
11SB513		25		67	11SC817		38			11SB522	26	25							
11SB813		28			11SD017		40			11SB822		28							
11SC013		30		67	11SD217		42			11SC022		30							
11SC213	16	32	35	64	11SB518	21	25	35	80	11SC222		32	40	90					
11SC513		35			11SB818		28			11SC522		35							
11SC813		38		67	11SC018		30			11SC822		38							
11SA914		19			11SC218		32			11SD022		40							
11SB014		20		67	11SC518		35			11SD222		42							
11SB214	17	22	35	64	11SC818	22	38	35	80	11SD522	27	45	40	90					
11SB414		24			11SD018		40			11SD822		48							
11SB514		25			11SD218		42			11SE022		50							
11SB814		28		67	11SB519		25			11SB523		25							
11SC014		30			11SB819		28			11SB823		28							
11SC214	18	32	35	64	11SC019	23	30	35	80	11SC023	28	30	40	90					
11SC514		35			11SC219		32			11SC223		32							
11SC814		38		67	11SC519		35			11SC523		35							
11SD014		40			11SC819		38			11SC823		38							



1" x 17,02 mm

Versione (*) / Type (*) / Typ (*) / Tipo (*)

16B-1 25,4 x 17,02 mm

DIN 8187 ISO/R606

CATENA	CHAIN	KETTE	CHAÎNE	CADENA	ISO mm
Passo	Pitch	Teilung	Pas	Paso	25,40
Larghezza interna	Internal width	Innere Breite	Largeur interieure	Ancho interno	17,02
Rullo ø	Roller ø	Rollen ø	ø du rouleau	Rodillo ø	15,88

PIGNONE	SPROCKETS	KETTENRÄDER	PIGNONS	PIÑONES	
Raggio dente r	Tooth radius r	Radius r	Rayon de denture r	Radio diente r	r 26,0
Larghezza raggio C	Radius width C	Breite C	Largeur de rayon C	Ancho radio C	C 2,5
Largh. Dente h ₁	Tooth width h ₁	Zahnbreite h ₁	Larg. de denture h ₁	Ancho diente h ₁	h ₁ 16,2

b-T-M pag. / page 19

Materiale C 45 E
UNI EN 10083-1

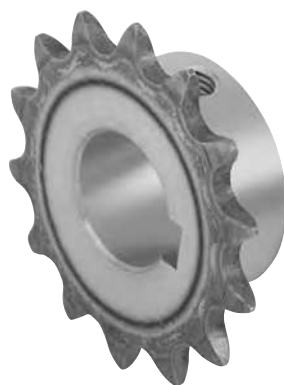
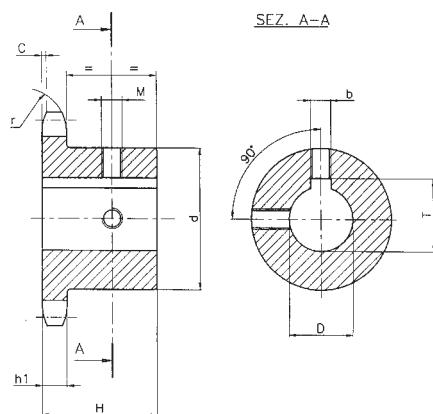
Material C 45 E
UNI EN 10083-1

Werkstoff C 45 E
UNI EN 10083-1

Matière C 45 E
UNI EN 10083-1

Material C 45 E
UNI EN 10083-1

CODICE	Z	D	H	d	CODICE	Z	D	H	d	CODICE	Z	D	H	d	CODICE	Z	D	H	d
12SB511	11	25	40	61	12SD015	15	40	40	92	12SD019	19	40	45	100	12SD023	23	40	50	110
12SB811		28			12SD215		42			12SD219		42			12SD223		42		
12SC011		30			12SD515		45			12SD519		45			12SD523		45		
12SC211		32			12SD815		48			12SD819		48			12SD823		48		
12SC511		35			12SE015		50			12SE019		50			12SE023		50		
12SC811	12	38	40	65	12SB516	16	25	45	100	12SB520	20	25	45	100	12SB524	24	25	50	110
12SD011		40		67	12SB816		28			12SB820		28			12SB824		28		
12SD211		42		69*	12SC016		30			12SC020		30			12SC024		30		
12SB512		25		69	12SC216		32			12SC220		32			12SC224		32		
12SB812		28			12SC516		35			12SC520		35			12SC524		35		
12SC012		30			12SC816		38			12SC820		38			12SC824		38		
12SC212		32			12SD016		40			12SD020		40			12SD024		40		
12SC512		35			12SD216		42			12SD220		42			12SD224		42		
12SC812	13	38	40	78	12SD516	17	45	45	100	12SD520	21	45	50	110	12SD524	25	45	50	110
12SD012		40			12SD816		48			12SD820		48			12SD824		48		
12SD212		42			12SE016		50			12SE020		50			12SE024		50		
12SB513		25			12SB517		25			12SB521		25			12SB525		25		
12SB813		28			12SB817		28			12SB821		28			12SB825		28		
12SC013	14	30	40	84	12SC017	18	30	45	100	12SC021	22	30	50	110	12SC025	23	30	50	110
12SC213		32			12SC217		32			12SC221		32			12SC225		32		
12SC513		35			12SC517		35			12SC521		35			12SC525		35		
12SC813		38			12SC817		38			12SC821		38			12SC825		38		
12SD013		40			12SD017		40			12SD021		40			12SD025		40		
12SD213	15	42	40	92	12SD217	19	42	45	100	12SD221	23	42	50	110	12SD225		42		
12SD513		45			12SD517		45			12SD521		45			12SD525		45		
12SD813		48			12SD817		48			12SD821		48			12SD825		48		
12SE013		50			12SE017		50			12SE021		50			12SE025		50		
12SB514		25			12SB518		25			12SB522		25							
12SB814	16	28	40	84	12SB818	20	28	45	100	12SB822	24	28	50	110					
12SC014		30			12SC018		30			12SC022		30							
12SC214		32			12SC218		32			12SC222		32							
12SC514		35			12SC518		35			12SC522		35							
12SC814		38			12SC818		38			12SC822		38							
12SD014	17	40	40	84	12SD018	21	40	40	100	12SD022	25	40	40	110					
12SD214		42			12SD218		42			12SD222		42							
12SD514		45			12SD518		45			12SD522		45							
12SD814		48			12SD818		48			12SD822		48							
12SE014		50			12SE018		50			12SE022		50							
12SB515	18	25	40	92	12SB519	22	25	45	100	12SB523	26	25	45	110					
12SB815		28			12SB819		28			12SB823		28							
12SC015		30			12SC019		30			12SC023		30							
12SC215		32			12SC219		32			12SC223		32							
12SC515		35			12SC519		35			12SC523		35							
12SC815	19	38	40	92	12SC819	23	38	45	100	12SC823	27	38	45	110					



1" 1/4 x 3/4"

20B-1 31,75 x 19,56 mm

DIN 8187 ISO/R606

CATENA	CHAIN	KETTE	CHAÎNE	CADENA	ISO mm
Passo	Pitch	Teilung	Pas	Paso	31,75
Larghezza interna	Internal width	Innere Breite	Largeur interieure	Ancho interno	19,56
Rullo ø	Roller ø	Rollen ø	ø du rouleau	Rodillo ø	19,05

PIGNONE	SPROCKETS	KETTENRÄDER	PIGNONS	PIÑONES	
Raggio dente r	Tooth radius r	Radius r	Rayon de denture r	Radio diente r	r 32,0
Larghezza raggio C	Radius width C	Breite C	Largeur de rayon C	Ancho radio C	C 3,5
Largh. Dente h ₁	Tooth width h ₁	Zahnbreite h ₁	Larg. de denture h ₁	Ancho diente h ₁	h ₁ 18,5

b-T-M pag. / page 19

Materiale C 45 E
UNI EN 10083-1

Material C 45 E
UNI EN 10083-1

Werkstoff C 45 E
UNI EN 10083-1

Matière C 45 E
UNI EN 10083-1

Material C 45 E
UNI EN 10083-1

CODICE	Z	D	H	d
13SB509	09	25	40	63
13SC009		30		
13SC209		32		
13SC509		35		
13SC809		38		
13SB510	10	25	40	70
13SC010		30		
13SC210		32		
13SC510		35		
13SC810		38		
13SB511	11	25	45	77
13SB811		28		
13SC011		30		
13SC211		32		
13SC511		35		
13SC811		38		
13SD011		40		82
13SD211		42		
13SD511		45		
13SE011		50		
13SF011		60		93
13SB512	12	25	45	88
13SB812		28		
13SC012		30		
13SC212		32		
13SC512		35		
13SC812		38		
13SD012		40		93
13SD212		42		
13SD512		45		
13SD812		48		
13SE012		50		
13SF012		60		
13SB513	13	25	45	98
13SB813		28		
13SC013		30		

CODICE	Z	D	H	d
13SC213	13	32	45	98
13SC513		35		
13SC813		38		
13SD013		40		
13SD213		42		
13SD513	14	45	45	108
13SD813		48		
13SE013		50		
13SF013		60		
13SC214	15	32	45	118
13SC514		35		
13SC814		38		
13SD014		40		
13SD214		42		
13SD514		45		
13SD814		48		
13SE014		50		
13SF014		60		
13SC215	16	32	50	120
13SC515		35		
13SC815		38		
13SD015		40		
13SD215		42		
13SD515		45		
13SD815		48		
13SE015		50		
13SF015		60		
13SC816	16	38	50	120
13SD016		40		
13SD216		42		
13SD516		45		
13SD816		48		
13SE016		50		
13SF016	16	60	50	120
13SF516		65		
13SG016		70		

CODICE	Z	D	H	d
13SC817	17	38	50	120
13SD017		40		
13SD217		42		
13SD517		45		
13SD817		48		
13SE017	18	50	50	120
13SF017		60		
13SF517		65		
13SG017		70		
13SC818	18	38	50	120
13SD018		40		
13SD218		42		
13SD518		45		
13SD818		48		
13SE018		50		
13SF018		60		
13SF518		65		
13SG018		70		
13SC819	19	38	50	120
13SD019		40		
13SD219		42		
13SD519		45		
13SD819		48		
13SE019		50		
13SF019		60		
13SF519		65		
13SG019		70		
13SC820	20	38	50	120
13SD020		40		
13SD220		42		
13SD520		45		
13SD820		48		
13SE020		50		
13SF020		60		
13SF520		65		
13SG020		70		