

Modular Belts for Corrugated Industry

www.rodamientos.net

2023



Movement Technologies

We are rapidly growing. Thanks to the "understanding of excellence" in product and service quality, in the plastic modular belt sector. We export plastic modular belts and accessories (sprockets, flights, sidewalls) produced with high production standards to more than 40 countries, including 5 continents.

We have right partnerships with industrial companies, original equipment manufacturers and distributors in many countries of the world with the strength of our production quality, flexible capability, pre-sales and after-sales service.

We are constantly proving our expertise for food industry. We have FDA and EU approvals that are recognized as quality standards around the world for the safe and hygienic carry of food products.

With our movement technologies, we are carrying your business to the future.

Today and always.

Special Belts For Corrugated Industry



Unique Design and Engineering

Special and unique design meet with engineering for corrugated applications.

Strongly designed belts with extra power, very smooth surface, bi-directional design, extra reinforced bottom surface and stronger hinge design.



Efficient Features and Functions

Industry-specific features and functions offers maximum efficiency.

Chamfered belt edges allow side shift applications, strong lug teeth sprockets, self lock pin design helps easy maintenance, wearing resistant material for pins, very high loading capacity, safety walking surface with XP254 CR type, longer lifetime.



Appropriate Material and Components

Appropriate high-quality materials and components offers advantages for corrugated- specific applications.

Low friction raw material with low coefficient friction features for corrugated industry needs.



**Safety
Walking**

**Safety first because
Modutech cares about you!**
Non skid surface offers safety
through walking for corrugated
industry .

XP254 CR

Corrugated Belt Series

Product Features and Functional Benefits

- Chamfered belt edges.
- Unique sprocket engagement - higher product load and longer conveyors.
- Unique sprocket engagement reduces pulsation and increases load capacity.
- Close transfer applications.
- Extra power, bi-directional belt for long conveyors.
- Safety walking top surface.

Available Moulded Module Sizes

- 152.4 mm module
- 76.2 mm module
- 50 mm module



Bi directional

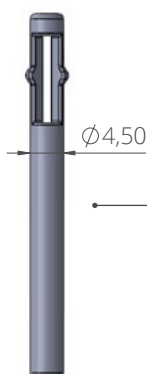
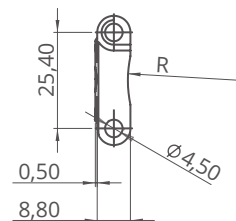
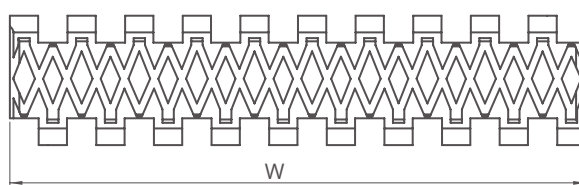
XP254 CR / Technical Information

BELT / PIN MATERIAL	BELT STRENGTH				TEMPERATURE		BELT WEIGHT
	Straight		Curve		C (min.)	C (max.)	Kg/m²
	Kg/m	N/m	Kg/m	N/m			
Acetal / PA6	4025	40250	-	-	-43	+110	7.90

- Belt strength and temperature values are maximum on the table.

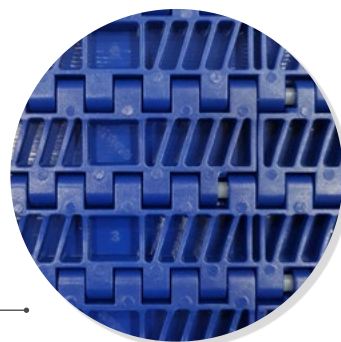
XP254 CR / Standard Belt Widths

BELT SERIES	WIDTH (W)				Belt With Tolerance (max.)
	PP-PE		POM		
	mm	inch	mm	inch	
XP254	50	2"	50	2"	± 0,5 mm
XP254	76,2	3"	76,2	3"	± 0,5 mm
XP254	152,4	6"	152,4	6"	± 0,5 mm
XP254	228,6	9"	228,6	9"	± 2 mm
XP254	304,8	12"	304,8	12"	± 2 mm
XP254	381	15"	381	15"	± 3 mm
XP254	457,2	18"	457,2	18"	± 3 mm
XP254	533,4	21"	533,4	21"	± 3 mm
XP254	609,6	24"	609,6	24"	± 3 mm
XP254	685,8	27"	685,8	27"	± 4 mm
XP254	762	30"	762	30"	± 4 mm
XP254	838,2	33"	838,2	33"	± 4 mm
XP254	914,4	36"	914,4	36"	± 4 mm
XP254	990,6	39"	990,6	39"	± 4 mm
XP254	1066,8	42"	1066,8	42"	± 4 mm
XP254	1143	45"	1143	45"	± 4 mm



Self & Easy Locking Pin

Reinforced Bottom Surface



XP254 FLT CR

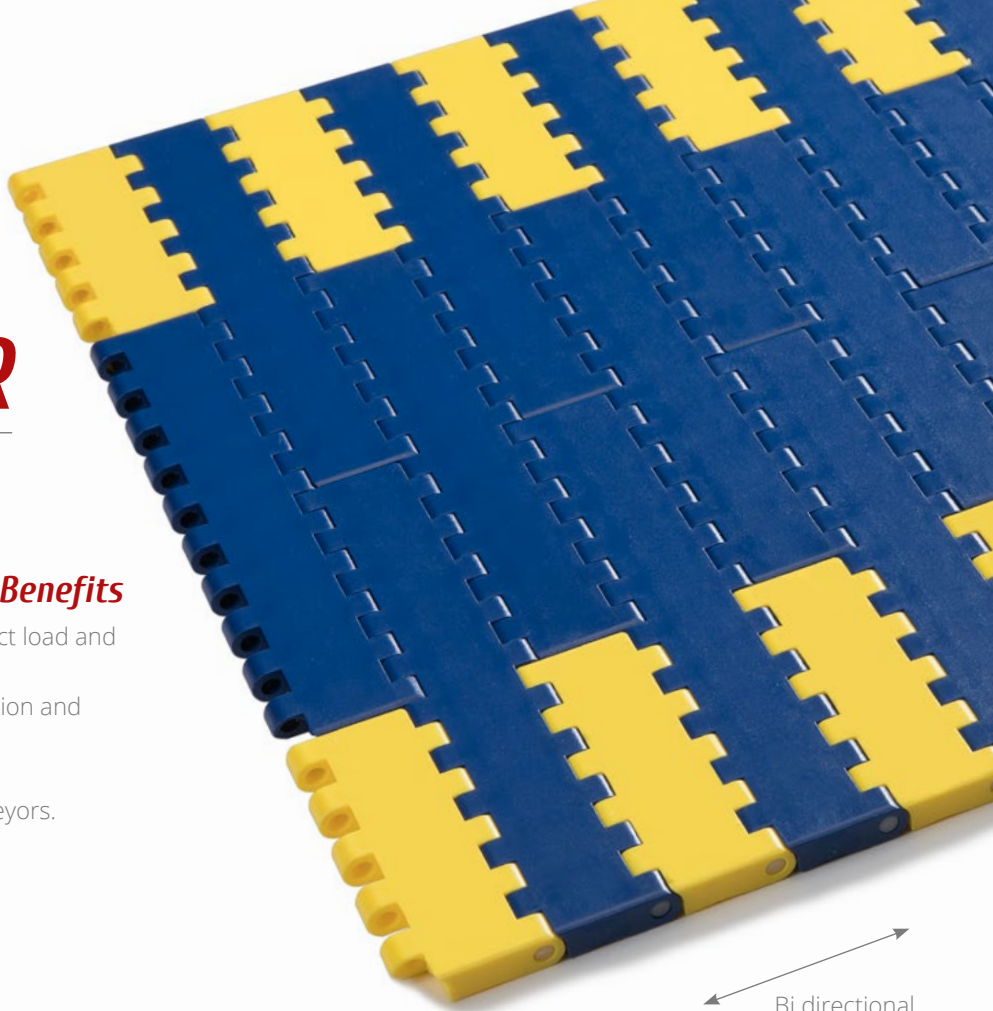
Corrugated Belt Series

Product Features and Functional Benefits

- Unique sprocket engagement - higher product load and longer conveyors.
- Unique sprocket engagement reduces pulsation and increases load capacity.
- Close transfer applications.
- Extra power, bi-directional belt for long conveyors.
- Chamfered belt edges.

Available Moulded Module Sizes

- 152.4 mm module
- 76.2 mm module
- 50 mm module



Bi directional

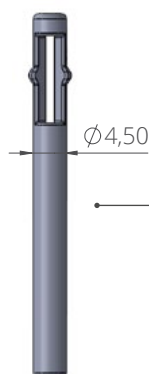
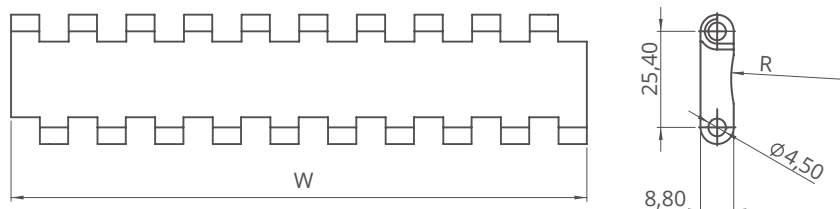
XP254 FLT CR / Technical Information

BELT / PIN MATERIAL	BELT STRENGTH				TEMPERATURE		BELT WEIGHT
	Straight		Curve		C (min.)	C (max.)	
	Kg/m	N/m	Kg/m	N/m			
Acetal / PA6	4025	40250	-	-	-43	+110	7.90

- Belt strength and temperature values are maximum on the table.

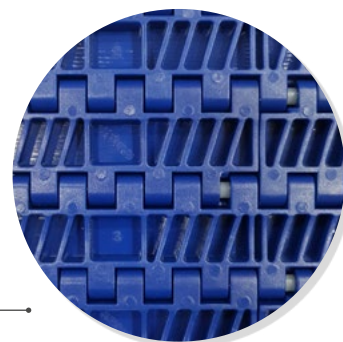
XP254 CR / Standard Belt Widths

BELT SERIES	WIDTH (W)				Belt With Tolerance (max.)
	PP-PE		POM		
	mm	inch	mm	inch	
XP254	50	2"	50	2"	± 0,5 mm
XP254	76,2	3"	76,2	3"	± 0,5 mm
XP254	152,4	6"	152,4	6"	± 0,5 mm
XP254	228,6	9"	228,6	9"	± 2 mm
XP254	304,8	12"	304,8	12"	± 2 mm
XP254	381	15"	381	15"	± 3 mm
XP254	457,2	18"	457,2	18"	± 3 mm
XP254	533,4	21"	533,4	21"	± 3 mm
XP254	609,6	24"	609,6	24"	± 3 mm
XP254	685,8	27"	685,8	27"	± 4 mm
XP254	762	30"	762	30"	± 4 mm
XP254	838,2	33"	838,2	33"	± 4 mm
XP254	914,4	36"	914,4	36"	± 4 mm
XP254	990,6	39"	990,6	39"	± 4 mm
XP254	1066,8	42"	1066,8	42"	± 4 mm
XP254	1143	45"	1143	45"	± 4 mm



Self & Easy Locking Pin

Reinforced Bottom Surface



EC127 C

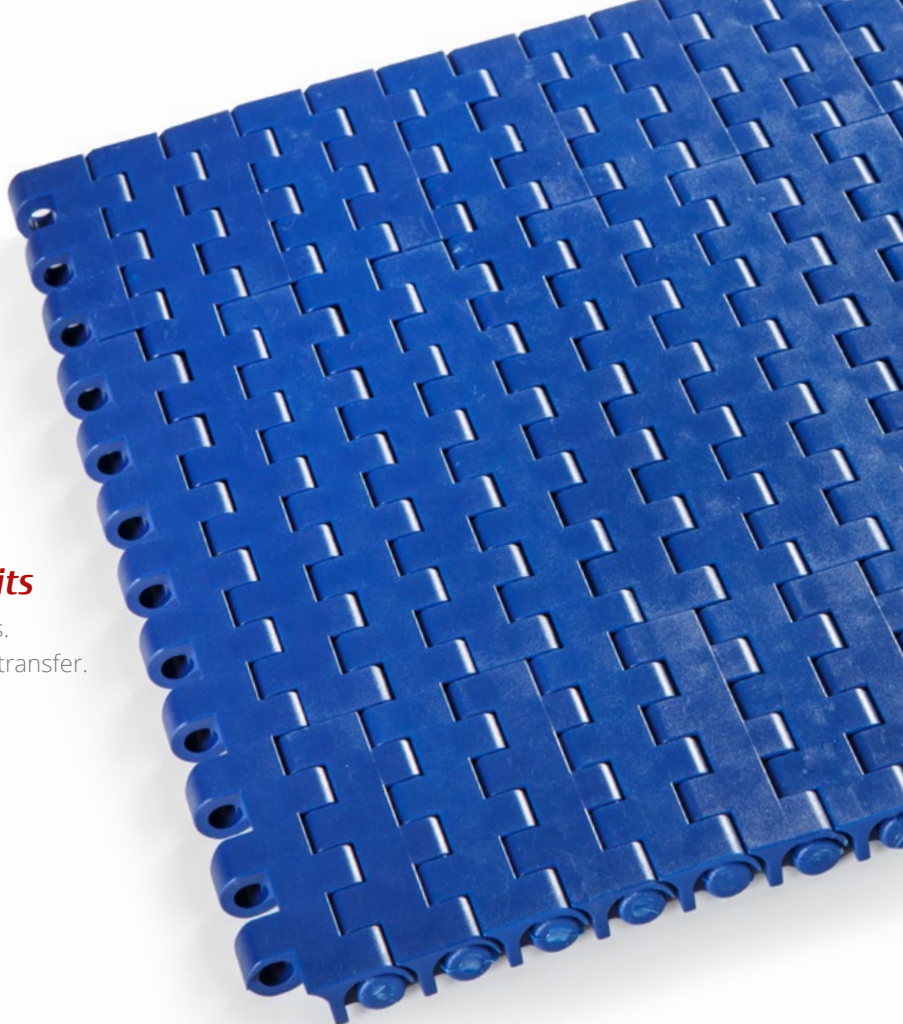
Corrugated Belt Series

Product Features and Functional Benefits

- Less vibration in high speed and nosebar applications.
- Wear resistance in high speed applications with tight transfer.
- Unique sprocket engagement reduces pulsation.
- Close transfer applications.
- Tight transfer and high speed conveyors.

Available Moulded Module Sizes

- 150 mm module
- 100 mm module
- 50 mm module



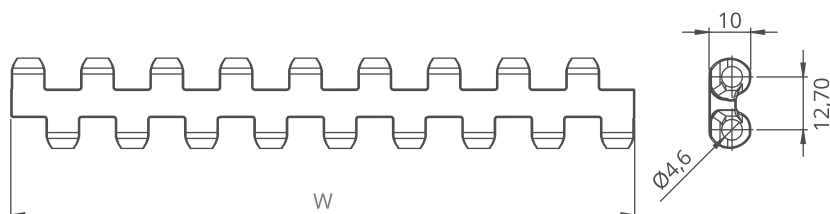
EC127 C / Technical Information

BELT / PIN MATERIAL	BELT STRENGTH				TEMPERATURE		BELT WEIGHT
	Straight		Curve		C (min.)	C (max.)	Kg/m ²
	Kg/m	N/m	Kg/m	N/m			
Acetal / PA6	1926	19260	-	-	-43	+110	7,00

- Belt strength and temperature values are maximum on the table.

EC127 C / Standard Belt Widths

BELT SERIES	WIDTH (W)				Belt With Tolerance (max.)
	PP-PE		POM		
	mm	inch	mm	inch	
EC127 C	150	5,9	150	5,9	± 1 mm
EC127 C	200	7,87	200	7,87	± 1 mm
EC127 C	250	9,84	250	9,84	± 2 mm
EC127 C	300	11,81	300	11,81	± 2 mm
EC127 C	350	13,77	350	13,77	± 2 mm
EC127 C	400	15,75	400	15,75	± 2 mm
EC127 C	450	17,71	450	17,71	± 2 mm
EC127 C	500	19,69	500	19,69	± 2 mm
EC127 C	550	21,65	550	21,65	± 2 mm
EC127 C	600	23,62	600	23,62	± 3 mm
EC127 C	650	25,60	650	25,60	± 3 mm
EC127 C	700	27,56	700	27,56	± 3 mm
EC127 C	750	29,50	750	29,50	± 3 mm
EC127 C	800	31,50	800	31,50	± 3 mm
EC127 C	850	33,46	850	33,46	± 4 mm
EC127 C	900	35,43	900	35,43	± 4 mm



- Standard belt increments 50 mm.

- Non standard belt increments 16,6 mm.

- Please contact with customer service for precise belt measurements.

XP254 Series

Sprockets and Technical Specifications



Z18



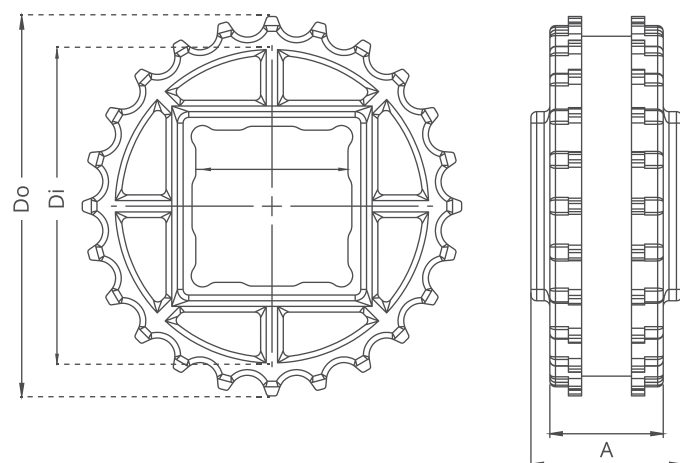
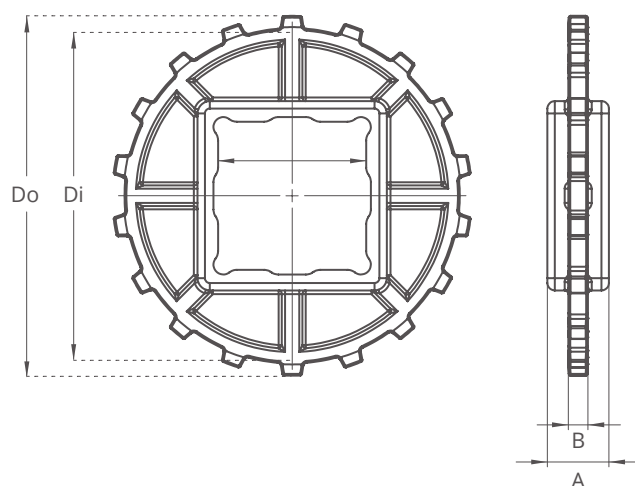
Z18



Z24



Z24



Split moulded sprockets are available for XP254 Z15 & Z18!

XP254 Series / Standard Sprockets Dimensions

NO.TEETH	Di	Do	B	A	Square Bore (Q)	Round Bore (R)	PRODUCT CODE	
							Square Type (Q)	Round Type (R)
Z8	53.2 mm	64 mm	8.0 mm	25.0 mm	25.0 mm	25.0 / 30.0	XP254SQZ8*PA	XP254SRZ8*PA
Z10	71.6 mm	82.5 mm	8.0 mm	25.0 mm	40.0 mm	25.0 / 30.0	XP254SQZ10*PA	XP254SRZ10*PA
Z12	89.0 mm	99.5 mm	8.0 mm	25.0 mm	40.0 mm	25.0 / 30.0	XP254SQZ12*PA	XP254SRZ12*PA
Z15	114.0 mm	124.0 mm	8.0 mm	25.0 mm	40.0 / 60.0 mm	25.0 / 30.0	XP254SQZ15*PA	XP254SRZ15*PA
Z18	136.4 mm	146.4 mm	8.0 mm	25.0 mm	40.0 / 60.0 mm	25.0 / 30.0	XP254SQZ18*PA	XP254SRZ18*PA

*Other sprockets and hub sizes are manufactured up to request. *POM (Acetal) and PP (Polypropylene) sprockets raw material is available on request.

***Split sprockets are available for each size.**

EC127 Series / Standard Sprockets Dimensions

NO.TEETH	Di	Do	B	A	Square Bore (Q)	Round Bore (R)	PRODUCT CODE	
							Square Type (Q)	Round Type (R)
Z19	68.5 mm	78 mm	3.5 mm	40.0 mm	40.0 mm	25.0 / 30.0	EC127SQZ19*PA	EC127SRZ19*PA
Z24	88.7 mm	98.8 mm	3.5 mm	40.0 mm	40.0 mm	25.0 / 30.0	EC127SQZ24*PA	EC127SRZ24*PA
Z28	105.0 mm	115.2 mm	3.5 mm	40.0 mm	40.0 mm	25.0 / 30.0	EC127SQZ28*PA	EC127SRZ28*PA
Z30	113.0 mm	123.3 mm	3.5 mm	40.0 mm	40.0 mm	25.0 / 30.0	EC127SQZ30*PA	EC127SRZ30*PA
Z36	137.5 mm	148.0 mm	3.5 mm	40.0 mm	40.0 mm	25.0 / 30.0	EC127SQZ36*PA	EC127SRZ36*PA

*Other sprockets and hub sizes are manufactured up to request.

*POM (Acetal) and PP (Polypropylene) sprockets raw material is available on request.

**ROYSE SEVILLA**

Parque Sevilla Industrial
Calle Parsi 7, nº5
41016-Sevilla
Telf: +34 954 671 050
+ 34 954 999 454
sevilla@rodamientos.net

ROYSE CÓRDOBA

Pol. Ind. Las Quemadas
C/Andrés Barrera, s/n
Parcela 110A, mod. 4
14014-Córdoba
Telf: +34 957 322 009
cordoba@rodamientos.net

ROYSE VALLADOLID

Pol. Ind. San Cristóbal
C/Plata, nº22, nave A
47012-Valladolid
Telf: +34 983 217 867
valladolid@rodamientos.net

ROYSE MEDINA

C/Alto de San Juan,
nº1-A bajo
47800-Medina de Rioseco
(Valladolid)
Telf: +34 983 217 867
rioseco@rodamientos.net

ROYSE MADRID

Pol. Ind. La Postura
Avda. Andalucía, nº166
Ctra. N-IV-Km 24,5
28340-Valdemoro (Madrid)
Telf: +34 918 084 970
madrid@rodamientos.net

ROYSE ESTEPA

Pol. Ind. Sierra Sur
Avda. de la Innovación, 5
41560-Esteba (Sevilla)
Telf: +34 955 913 975
esteba@rodamientos.net

ROYSE RODABUR

Alcalde Martín Cobos, nº15
Pentasa 1, nave 1
09007-Burgos
Telf: +34 947 474 455
burgos@rodamientos.net

ROYSE NORTE

P.I.Txirrita Maleo 2M
20100-Rentería
(Guipúzcoa)
Telf: +34 943 400 886
norte@rodamientos.net

ROYSE GRANADA

Pol. Ind. Juncaril
C/Almuñécar, parcela 163
18220-Albolote (Granada)
Telf: +34 958 467 690
granada@rodamientos.net

ROYSE VALENCIA

Parque Empresarial Táctica
C/Carboners, 12 naves 7 y 8
46988-Paterna (Valencia)
Telf: +34 961 345 454
valencia@rodamientos.net

ROYSE MURCIA

Pol. Ind. La Polvorista
C/José Colucho Moñino
nave C23
30500-Molina de Segura
(Murcia)
Telf: +34 968 611 050
murcia@rodamientos.net

ROYSE CATALUÑA

P.E.Cervelló
C/Macabeo n.10
08758- Cervelló
(Barcelona)
Telf: +34 936 630 740
bcn@rodamientos.net

ROYSE LINARES

Pol. Ind. Los Jarales
C/Mina la Mejor
23700-Linares (Jaén)
Telf: +34 953 693 400
linares@rodamientos.net

ROYSE MÁLAGA

Pol. Ind. San Luis
C/Veracruz, nº 37
29006-Málaga
Telf: +34 951 491 239
malaga@rodamientos.net

ROYSE PONTEVEDRA

Pol. Ind. A Granxa
Rúa C, Paralela 4, Parcela 133
36400-O Porriño
(Pontevedra)
Telf: +34 986 342 870
galicia@rodamientos.net

ROYSE ÍSM

Parque Sevilla Industrial
Calle Parsi, 3, nº12
41016-Sevilla
Telf: +34 954 999 860