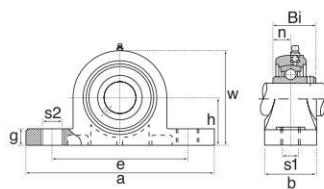
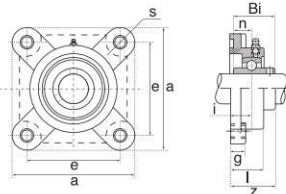


Thermoplastische Gehäuse / Thermoplastic Pillow Blocks



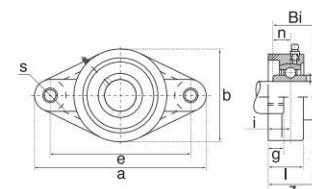
224

Ref Type	h	a	e	b	s1	s2	g	w	Bi	n	Weight Kg	Bearing No.
TP201	33.3	127.0	95.0	38.0	11.0	14.0	14.2	65.6	31.0	12.7	0.12 kg	SUC201
TP202	33.3	127.0	95.0	38.0	11.0	14.0	14.2	65.6	31.0	12.7	0.12 kg	SUC202
TP203	33.3	127.0	95.0	38.0	11.0	14.0	14.2	65.6	31.0	12.7	0.12 kg	SUC203
TP204	33.3	127.0	95.0	38.0	11.0	14.0	14.2	65.6	31.0	12.7	0.12 kg	SUC204
TP205	36.5	140.6	105.0	38.0	11.0	14.0	14.5	71.0	34.0	14.3	0.14 kg	SUC205
TP206	42.9	163.0	118.0	46.0	14.0	18.0	17.8	84.0	38.1	15.9	0.20 kg	SUC206
TP207	47.6	168.0	127.0	48.0	14.0	18.0	18.0	94.5	42.9	17.5	0.25 kg	SUC207
TP208	49.2	184.0	137.0	54.0	14.0	18.0	19.5	101.0	49.2	19.0	0.35 kg	SUC208
TP209	54.0	192.0	146.0	54.0	17.0	20.0	23.0	106.0	49.2	19.0	0.45 kg	SUC209
TP210	57.2	206.0	159.0	60.0	17.0	20.0	23.0	114.0	51.6	19.0	0.55 kg	SUC210
TP211	63.5	219.0	171.0	60.0	20.0	23.0	23.0	127.0	55.6	22.2	1.38 kg	SUC211
TP212	69.5	241.0	184.0	70.0	20.0	23.0	25.0	138.0	65.1	25.4	1.52 kg	SUC212



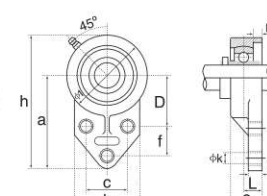
Ref Type	a	e	g	l	s	z	i	Bi	n	Weight Kg	Bearing No.
TF201	86.0	63.5	13.4	27.8	11.0	34.6	18.0	31.0	12.7	0.12 kg	SUC201
TF202	86.0	63.5	13.4	27.8	11.0	34.6	18.0	31.0	12.7	0.12 kg	SUC202
TF203	86.0	63.5	13.4	27.8	11.0	34.6	18.0	31.0	12.7	0.12 kg	SUC203
TF204	86.0	63.5	13.4	27.8	11.0	34.6	18.0	31.0	12.7	0.12 kg	SUC204
TF205	95.0	70.0	14.0	28.0	11.0	36.7	17.0	34.0	14.3	0.15 kg	SUC205
TF206	107.0	83.0	14.3	31.5	11.0	41.2	19.2	38.1	15.9	0.18 kg	SUC206
TF207	118.0	92.0	15.5	34.8	13.0	46.9	21.5	42.9	17.5	0.26 kg	SUC207
TF208	130.0	102.0	17.0	37.5	14.0	53.2	23.0	49.2	19.0	0.33 kg	SUC208
TF209	137.0	105.0	19.0	41.0	17.0	54.2	24.0	49.2	19.0	0.42 kg	SUC209
TF210	143.0	111.0	21.0	43.0	17.0	57.6	25.0	51.6	19.0	0.51 kg	SUC210
TF211	162.0	130.0	20.0	43.0	19.0	58.4	25.0	55.6	22.2	1.40 kg	SUC211
TF212	175.0	143.0	20.0	48.0	19.0	68.7	29.0	65.1	25.4	1.60 kg	SUC212

Thermoplastische Gehäuse / Thermoplastic Pillow Blocks



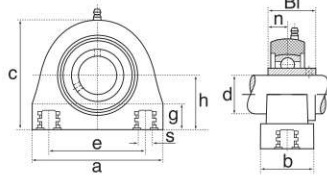
225

Ref Type	a	e	b	g	l	s	z	i	Bi	n	Weight Kg	Bearing No.
TFL201	113.0	90.0	65.0	13.4	26.5	33.3	33.7	15.4	31.0	12.7	0.08 kg	SUC201
TFL202	113.0	90.0	65.0	13.4	26.5	33.3	33.7	15.4	31.0	12.7	0.08 kg	SUC202
TFL203	113.0	90.0	65.0	13.4	26.5	33.3	33.7	15.4	31.0	12.7	0.08 kg	SUC203
TFL204	113.0	90.0	65.0	13.4	26.5	33.3	33.7	15.4	31.0	12.7	0.08 kg	SUC204
TFL205	134.0	99.0	70.0	14.3	28.0	36.2	36.7	17.0	34.0	14.3	0.10 kg	SUC205
TFL206	148.0	117.0	80.0	14.3	30.5	40.2	41.2	19.0	38.1	15.9	0.13 kg	SUC206
TFL207	164.0	130.0	90.0	15.5	32.0	44.4	43.4	19.0	42.9	17.5	0.16 kg	SUC207
TFL208	176.0	144.0	100.0	17.2	35.0	44.0	51.7	21.5	49.2	19.0	0.24 kg	SUC208
TFL209	188.0	149.0	108.0	21.0	41.0	47.0	54.2	24.0	49.2	19.0	0.32 kg	SUC209
TFL210	197.0	157.0	115.0	21.0	43.0	47.0	57.6	25.0	51.6	19.0	0.42 kg	SUC210
TFL211	226.0	185.0	129.0	20.0	43.0	49.0	58.4	25.0	55.6	22.2	1.40 kg	SUC211
TFL212	250.0	202.0	140.0	20.0	48.0	49.0	68.7	29.0	65.1	25.4	1.60 kg	SUC212



Ref Type	a	b	c	D	e	f	g	h	k	n	Bolt dia	Weight Kg	Bearing No.
FBL201	76.2	62.0	38.1	42.9	33.7	22.2	11.4	108.0	10.7	12.7	M10	0.08 kg	SUC201
FBL202	76.2	62.0	38.1	42.9	33.7	22.2	11.4	108.0	10.7	12.7	M10	0.08 kg	SUC202
FBL203	76.2	62.0	38.1	42.9	33.7	22.2	11.4	108.0	10.7	12.7	M10	0.08 kg	SUC203
FBL204	76.2	62.0	38.1	42.9	33.7	22.2	11.4	108.0	10.7	12.7	M10	0.08 kg	SUC204
FBL205	85.7	63.5	41.3	46.0	41.2	28.6	11.4	120.6	10.7	14.3	M10	0.11 kg	SUC205
FBL206	96.5	76.0	47.6	52.4	41.5	31.8	13.3	138.5	10.7	15.9	M10	0.16 kg	SUC206
FBL207	109.5	98.0	50.8	60.3	47.1	31.8	16.1	157.0	13.1	17.5	M12	0.23 kg	SUC207

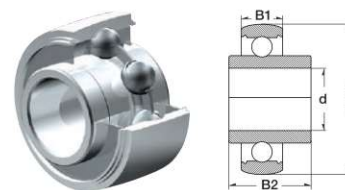
Thermoplastische Gehäuse / Thermoplastic Pillow Blocks



226

Ref Type	d	a	e	h	b	s	c	Bi	n	g	Weight Kg	Bearing No.
TPA204	20.0	76.0	52.0	33.3	38.0	M8	64.0	31.0	12.7	13.0	0.09 kg	SUC204
TPA205	25.0	84.0	56.0	36.5	38.0	M10	72.0	34.1	14.3	13.0	0.12 kg	SUC205
TPA206	30.0	94.0	66.0	42.9	48.0	M10	84.0	38.1	15.9	16.0	0.18 kg	SUC206
TPA207	35.0	110.0	80.0	47.6	48.0	M10	95.0	49.2	17.5	18.0	0.26 kg	SUC207
TPA208	40.0	116.0	84.0	49.2	54.0	M12	100.0	49.2	19.0	20.0	0.3 kg	SUC208
TPA209	45.0	120.0	90.0	54.2	54.0	M12	108.0	49.2	19.0	20.0	0.35 kg	SUC209
TPA210	50.0	130.0	94.0	57.2	60.0	M16	116.0	51.6	19.0	22.0	0.45 kg	SUC210

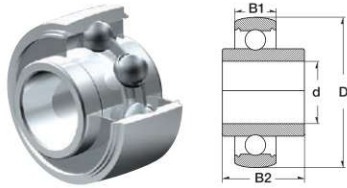
Rostfreie Gehäuselager-Einsätze / Stainless Steel Inserts



227

Dimension (inch)	Dimension (mm)				Designation/Type	*Load Rating	
	d	D	B1	B2		C, dyn. N	C, stat. N
	12.0	47.0	17.0	31.0	SUC 201	7500	4500
1/2	12.7	47.0	17.0	31.0	SUC 201-8	7500	4500
	15.0	47.0	17.0	31.0	SUC 202	7500	4500
5/8	15.8	47.0	17.0	31.0	SUC 202-10	7500	4500
	17.0	47.0	17.0	31.0	SUC 203	7500	4500
11/16	17.4	47.0	17.0	31.0	SUC 203-11	7500	4500
	20.0	47.0	17.0	31.0	SUC 204	10000	6300
3/4	19.0	47.0	17.0	31.0	SUC 204-12	10000	6300
	25.0	52.0	17.0	34.1	SUC 205	11000	7100
1	25.4	52.0	17.0	34.1	SUC 205-16	11000	7100
	30.0	62.0	19.0	38.1	SUC 206	15200	10200
1 1/4	31.7	62.0	19.0	38.1	SUC 206-20	15200	10200
	35.0	72.0	20.0	42.9	SUC 207	20100	18100
1 1/4	31.7	72.0	20.0	42.9	SUC 207-20	20100	18100
	40.0	80.0	21.0	49.2	SUC 208	23000	18100
1 1/2	38.1	80.0	21.0	49.2	SUC 208-24	23000	18100
	45.0	85.0	22.0	49.2	SUC 209	25600	18100
1 5/8	41.2	85.0	22.0	49.2	SUC 209-26	25600	18100
1 3/4	44.4	85.0	22.0	49.2	SUC 209-28	25600	18100
	50.0	90.0	23.0	51.6	SUC 210	27500	20200
2	50.8	90.0	23.0	51.6	SUC 210-32	27500	20200
	55.0	100.0	25.0	55.6	SUC 211	33500	29200
2	50.8	100.0	25.0	55.6	SUC 211-32	33500	29200
	60.0	110.0	27.0	65.1	SUC 212	36800	32800
	65.0	120.0	28.0	65.1	SUC213	57500	40000

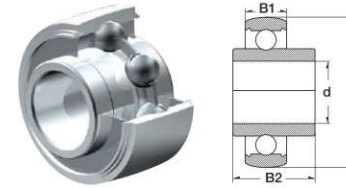
Rostfreie Gehäuselager-Einsätze / Stainless Steel Inserts



228

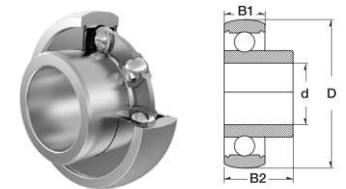
Dimension (inch)	Dimension (mm)				Designation/Type	* Load Rating	
	d	D	B1	B2		C, dyn. N	C, stat. N
	70.0	125.0	29.0	74.6	SUC214	60800	45000
	75.0	130.0	32.0	77.8	SUC215	50890	41000
	80.0	140.0	33.0	82.6	SUC216	55890	44620
	90.0	160.0	37.0	96.0	SUC218	74000	60500
	65.0	120.0	28.0	65.1	SUC213	57500	40000
	70.0	125.0	29.0	74.6	SUC214	60800	45000
	75.0	130.0	32.0	77.8	SUC215	50890	41000
	80.0	140.0	33.0	82.6	SUC216	55890	44620
	90.0	160.0	37.0	96.0	SUC218	74000	60500

Rostfreie Gehäuselager-Einsätze für hohe Tragzahlen / High Load Stainless Steel Inserts



229

d	Dimension (mm)			Designation/Type	*Load Rating	
	D	B1	B2		C, dyn. N	C, stat. N
20.0	52.0	17.0	34.1	SUCX04	13900	7800
25.0	62.0	19.0	38.1	SUCX05	15400	10200
30.0	72.0	20.0	42.9	SUCX06	20300	14000
35.0	80.0	21.0	49.2	SUCX07	23000	16000
40.0	85.0	22.0	49.2	SUCX08	25600	18100
45.0	90.0	24.0	51.6	SUCX09	27500	20200
50.0	100.0	25.0	55.6	SUCX10	34000	25500



d	Dimension (mm)			Designation/Type	*Load Rating	
	D	B1	B2		C, dyn. N	C, stat. N
15.0	40.0	12.0	22.0	SSB 202	7820	3580
17.0	40.0	12.0	22.0	SSB 203	7820	3580
20.0	47.0	14.0	25.0	SSB 204	10370	5040
25.0	52.0	15.0	27.0	SSB 205	11310	5970
30.0	62.0	16.0	30.0	SSB 206	15730	8640
35.0	72.0	17.0	32.0	SSB 207	20830	11680
40.0	80.0	18.0	34.0	SSB 208	23550	13600
45.0	85.0	19.0	41.2	SSB 209	26440	19560
50.0	90.0	20.0	43.5	SSB 210	30010	22530