

# Film Gripper Chains



**NEW HYGIENE  
SPRING**

# Film Gripper Chains

## GRIPPER CHAINS FOR THERMOFORMING MACHINES

Gripper chains are used to convey plastic film in "form, fill and seal" packaging machines.



SERIES	CLAMP DESIGN	CLAMP FEATURES				BASE CHAIN MATERIAL	CORROSION RESISTANCE	WEAR RESISTANCE
		FILM RETENTION	SPRING FORCE	CLAMP MATERIAL	SPRING MATERIAL			
TFK	 K STYLE CLAMP	VERY HIGH	55 N	SS	SS	S + NC	GOOD	EXCELLENT
						SS	EXCELLENT	GOOD
TF	 STANDARD CLAMP	HIGH	85 N	SS	SS	S + NC	GOOD	EXCELLENT
						SS	EXCELLENT	GOOD
TFO	 HORIZONTAL CLAMP	AVERAGE	60 N (30X2)	SS	SS	S + NC	GOOD	EXCELLENT
						SS	EXCELLENT	GOOD

## MATERIALS

TYPE	DESCRIPTION	FEATURES
S + NC	CARBON STEEL + NICKEL PLATED	Through hardened carbon steel and electroless nickel plating for good corrosion resistance. Excellent strength and wear resistance.
SS	AUSTENITIC STAINLESS STEEL	Cr-Ni austenitic stainless steel. AISI 302-304 (Wn 1.4301). Excellent corrosion resistance.

## PRODUCT FEATURES

- All chains are available in nickel plated or stainless steel construction, for outstanding corrosion resistance.
- Improved clamp design for increased film retention and smooth operation.
- Supplied in pre-stretched and matched strands for trouble free machine set-up.
- Special lubrication applied at factory, FDA H1 approved grease, for higher wear and corrosion resistance.





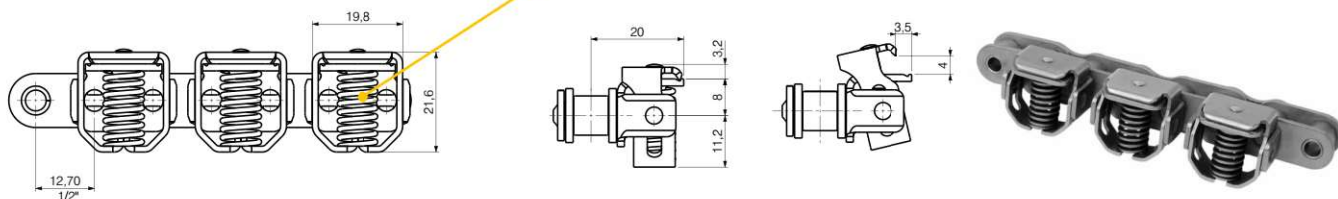
## K STYLE CLAMP "TFK SERIES"

The K style clamp allows a vertical movement combined with side rotation (kick-back) to ensure easy film engagement and scrap release.

126TFK

ISO 08B-1 : PITCH  $\frac{1}{2}$ " - 12,70 mm

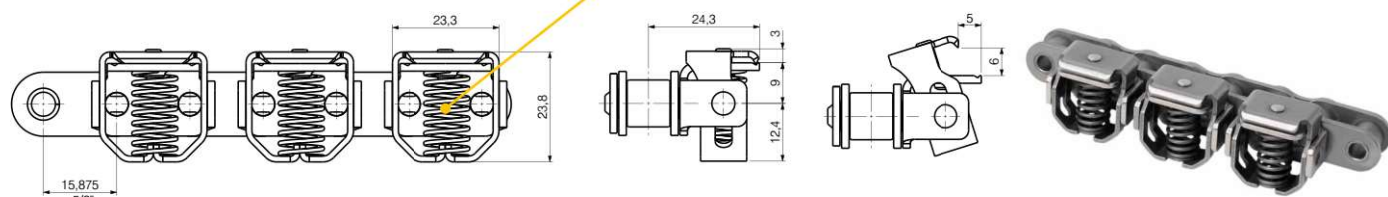
Round Spring



136TFK

ISO 10B-1 : PITCH  $\frac{5}{8}$ " - 15,875 mm

Round Spring

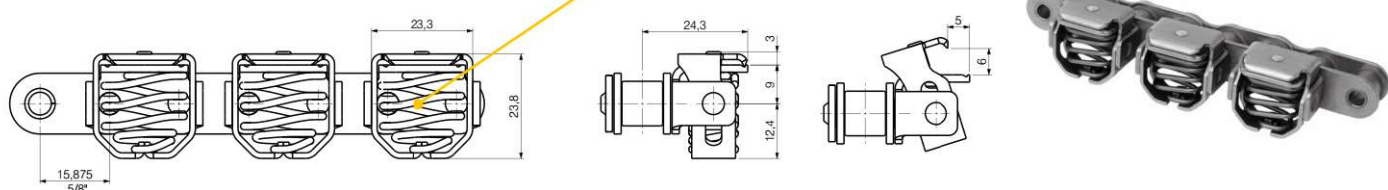


NEW

136TFKQ

10B-1 : PITCH  $\frac{5}{8}$ " - 15,875 mm


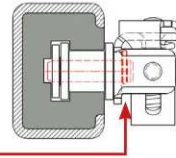

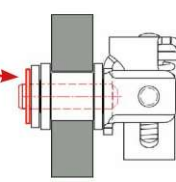
Hygiene Spring



REGINA REF.	BASE CHAIN MATERIAL	CLAMP MATERIAL	SPRING MATERIAL	CHAIN PITCH P		ROLLER DIAMETER Dr		INSIDE WIDTH W		CLAMPING FORCE	
				mm	inches	mm	inches	mm	inches		
126TFK	S + NC	SS	ROUND	SS	12,70	1/2	8,51	,335	7,75	,305	50
SS126TFK	SS	SS	ROUND	SS	12,70	1/2	8,51	,335	7,75	,305	50
136TFK	S + NC	SS	ROUND	SS	15,875	5/8	10,16	,400	9,65	,380	55
SS136TFK	SS	SS	ROUND	SS	15,875	5/8	10,16	,400	9,65	,380	55
NEW 136TFKQ	S + NC	SS	HYGIENE	SS	15,875	5/8	10,16	,400	9,65	,380	55
NEW SS136TFKQ	SS	SS	HYGIENE	SS	15,875	5/8	10,16	,400	9,65	,380	55

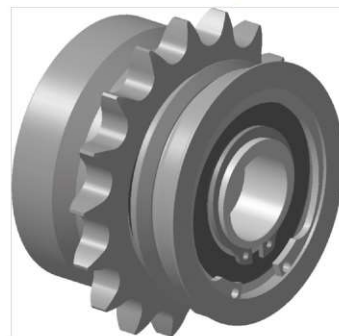
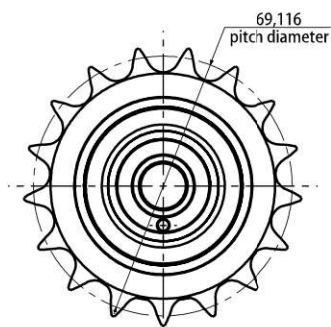
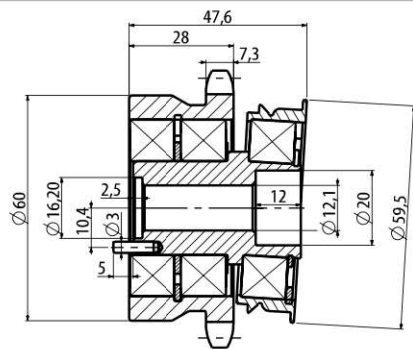
## CONNECTING LINKS

Depending on the guide shape profile you can choose between two types of connecting links

	GUIDE PROFILE STYLE	CHARACTERISTICS	PART N°	FOR CHAIN
UNIVERSAL 	 C-shaped guide	<b>Type 26</b> The wire clip is located on the clamp side. The universal connecting link fits in all types of chain guides, including C-shaped guide profile.	26/126TFK	126TFK
			26/136TFK	136TFK
			26/136TFKQ	136TFKQ
			26/SS126TFK	SS126TFK
			26/SS136TFK	SS136TFK
			26/SS136TFKQ	SS136TFKQ
REVERSED 	 Open guide	<b>Type 26R</b> Spring clip is located on the opposite side of the clamp. Suitable only with open guides.	26R/126TFK	126TFK
			26R/136TFK	136TFK
			26R/136TFKQ	136TFKQ
			26R/SS126TFK	SS126TFK
			26R/SS136TFK	SS136TFK
			26R/SS136TFKQ	SS136TFKQ

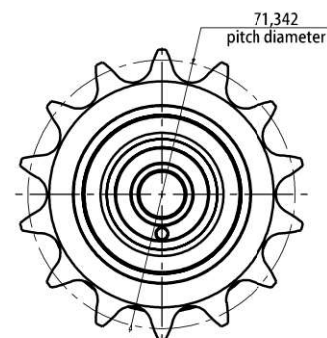
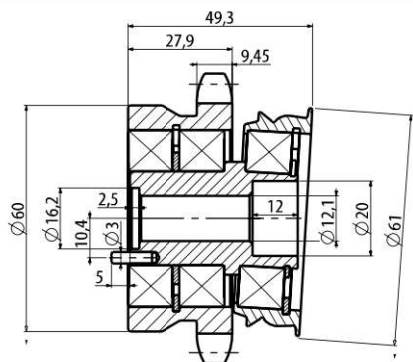
# CAM SPROCKET FOR CHAIN 126TFK (P= 1/2" ) - 12,70 MM

PART N° GS 89  
Z = 17

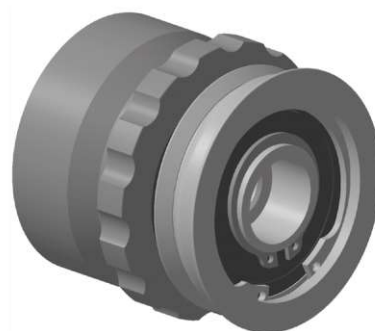
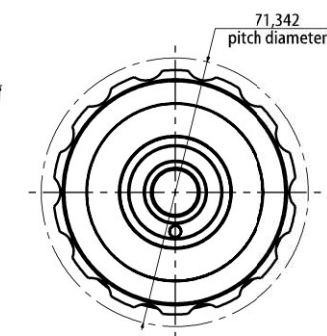
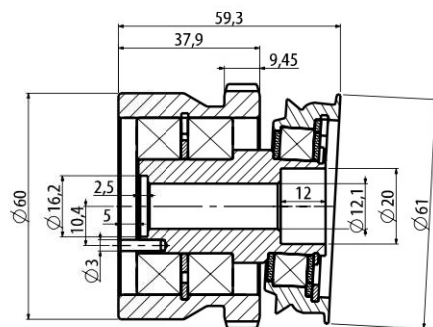


# CAM SPROCKETS FOR CHAIN 136TFK (P= 5/8" ) - 15,875 MM

PART N° GS 88  
Z = 14

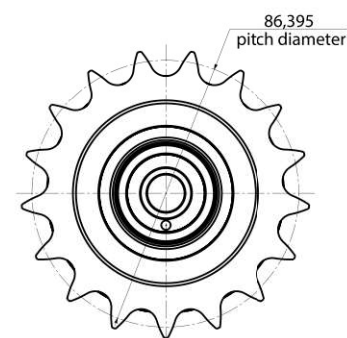
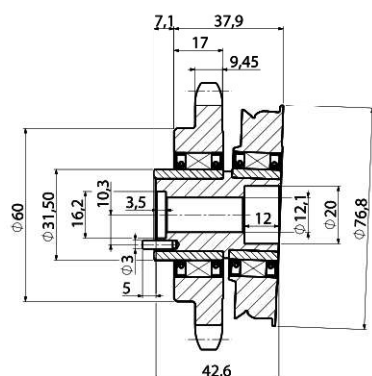


PART N° GS 106  
Z = 14



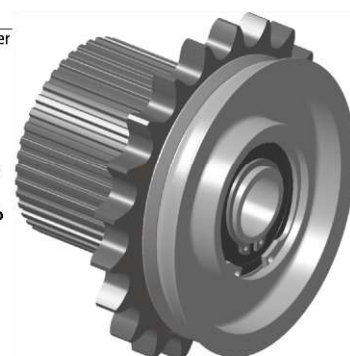
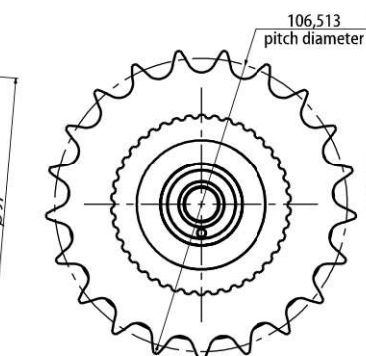
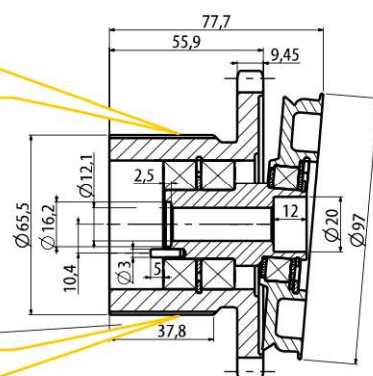
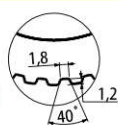
**NEW**

PART N° GS 160  
Z = 17



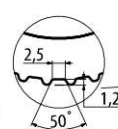
PART N° GS 107  
Z = 21

Belt type T5



PART N° GS 174  
Z = 21

Belt Type AT5



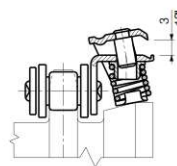
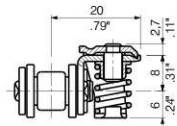
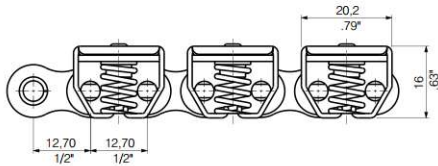


## STANDARD CLAMP "TF SERIES"

126TF

ISO 08 B-1 : PITCH  $\frac{1}{2}$ " - 12,70 mm

The standard clamp opens vertically with a slight side movement to follow the cam shape.



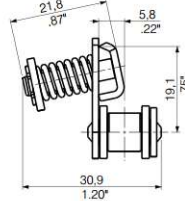
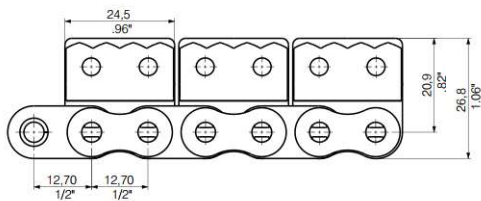
REGINA REF.	BASE CHAIN MATERIAL	CLAMP MATERIAL	SPRING MATERIAL	CHAIN PITCH		ROLLER DIAMETER		INSIDE WIDTH		CLAMPING FORCE
				P		Dr		W		
126TFNC/055	S + NC	SS	SS	12,70	$\frac{1}{2}$	8,51	,335	7,75	,305	85
SS126TF/019	SS	SS	SS	12,70	$\frac{1}{2}$	8,51	,335	7,75	,305	85

## HORIZONTAL CLAMP "TFO SERIES"

126TFO

ISO 08 B-1 : PITCH  $\frac{1}{2}$ " - 12,70 mm

Two springs of 30N each for uniform film clamping and control of film tension.



REGINA REF.	BASE CHAIN MATERIAL	CLAMP MATERIAL	SPRING MATERIAL	CHAIN PITCH		ROLLER DIAMETER		INSIDE WIDTH		CLAMPING FORCE	ASSEMBLY SIDE
				P		Dr		W			
126 TFO/P003	S + NC	SS	SS	12,70	$\frac{1}{2}$	8,51	,335	7,75	,305	60	left
126 TFO/P004	S + NC	SS	SS	12,70	$\frac{1}{2}$	8,51	,335	7,75	,305	60	right
SS126 TFO/000	SS	SS	SS	12,70	$\frac{1}{2}$	8,51	,335	7,75	,305	60	left
SS126 TFO/001	SS	SS	SS	12,70	$\frac{1}{2}$	8,51	,335	7,75	,305	60	right

Since the horizontal Film Gripper Chains (TFO series) have a dedicated geometry for right or left assembly side, each ordered quantity has to be split in 50% right and 50% left version.

## APPLICATION FIELD





## PERFORMANCE IN MOTION

### ITALY

REGINA CATENE CALIBRATE S.p.A.  
HEAD OFFICE:  
Via Monza, 90  
23870 Cernusco Lombardone (LC) - Italy  
Tel. +39 039 99801  
Fax +39 039 9905229  
sales@reginachain.net

### USA

REGINA USA, INC.  
305 E. Mahn Court  
Oak Creek, WI 53154 - USA  
Tel. 001 414 5710032  
Fax 001 414 5710225  
sales.us@reginachain.net

### FRANCE

REGINA INDUSTRIE s.a.r.l.  
Z.A.C. des Chatelliers  
34 Rue des Frères Lumière  
45800 Saint Jean De Braye - France  
Tel. +33 238 836363  
Fax +33 238 836413  
sales.fr@reginachain.net

### MEXICO

REGINA de MEXICO S.A. de C.V.  
Av. Aviación 5051-28  
Col. San Juan de Ocotán  
45019 Zapopan, Jalisco - Mexico  
Tel. +52 33 3627 4043  
Fax +52 33 3627 3930  
sales.mx@reginachain.net

### CHINA

REGINA TIANJIN CHAIN & BELT CO., LTD.  
Xi Qing Economic Development Area,  
Xiang Rui Road n. 17  
Tian Xiang Industrial Zone  
300385 Tian Jin - China  
Tel. +86 22 83961223  
Fax +86 22 83961202  
sales.cn@reginachain.net

### UNITED KINGDOM

REGINA INTERNATIONAL LIMITED  
Unit 1, Dyneley Road,  
Greenbank Business Park  
Whitebirk, Blackburn,  
Lancs BB1 3AB - United Kingdom  
Tel. +44 1254 661116  
Fax +44 1254 59456  
sales.uk@reginachain.net

### ARGENTINA

REGINA INTERNATIONAL S.A.  
Diagonal 190,  
1788-1655 José Leon Suárez  
Prov. Buenos Aires - Argentina  
Tel. +54 11 47296667  
Fax +54 11 47203210  
sales.ar@reginachain.net

### GERMANY

SALES OFFICE  
Tel. +49 1705251348  
Fax +49 7181489535  
sales.de@reginachain.net

### THE NETHERLANDS

SALES OFFICE  
Tel. +31 610681114  
sales.nl@reginachain.net

### SPAIN

CADENAS REGINA ESPAÑA, S.L.  
Calle Industria, 37  
08120 La Llagosta - Barcelona - España  
Tel. +34 93 5742838  
Fax +34 93 5740735  
sales.es@reginachain.net

### INDIA

SALES OFFICE  
Tel. +91 9881399026  
sales.in@reginachain.net

