

**Tecma
Drive, S.L.**
PROFESSIONAL FOR ROTATION



Slew Drives Catalogue

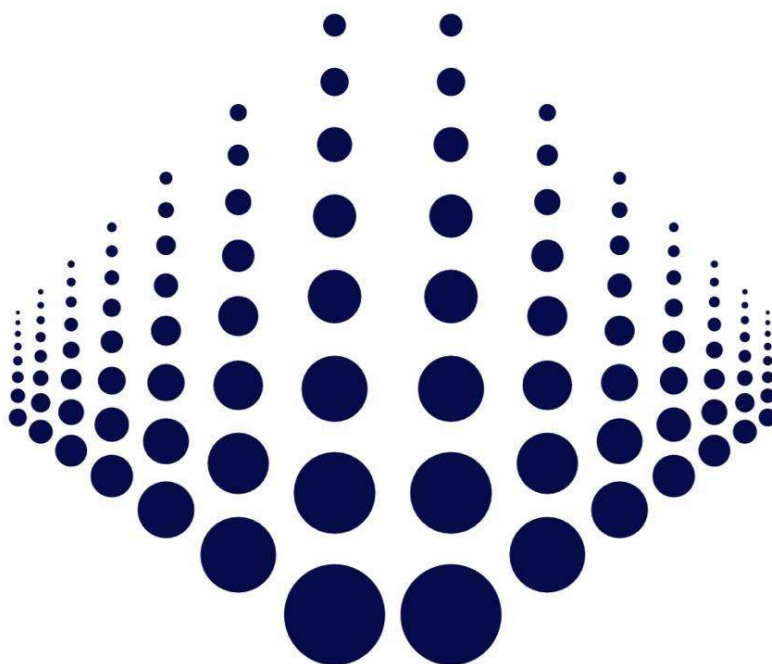
About us

TECMA DRIVE is a brand that comes to position itself in the industrial and solar market with the versatility and quality that a product needs to satisfy the demands of the ample and overparticular sector.

Behind TECMA DRIVE there is a long trajectory in the sector with an experience of more than 15 years, which allows us to commercialize and guarantee a product that meets the needs of the market.

To cover the wide demands in different sectors TECMA DRIVE can provide technical support and calculation solutions.

Additionally, all factories used for the manufacture of our products have current ISO certification and have been audited by Tecma Drive staff. These factories are obliged to adhere to the TECMA DRIVE drawings and quality specifications which cover all aspects of design, materials, and manufacture.



Production Equipment



Index

Explored view of slewing drives.....	3
Characteristics of slewing drives.....	4,5
Storage.....	6
Handling.....	6
Installation.....	6
Maintenance.....	7
Lubrication.....	7
Lubrication of TD-E/TD-W.....	8
Compatibility type of grease.....	9
Applications.....	10,11
TD-E7.....	12,13
TD-E9.....	14,15
TD-E12.....	16,17
TD-E14.....	18,19
TD-E17.....	20,21
TD-E19.....	22,23
TD-E25.....	24,25
TD-W9.....	26,27
TD-W12.....	28,29
TD-W14.....	30,31
TD-W17.....	32,33
TD-W21.....	34,35
TD-W25.....	36,37
Accessories.....	38
Technical form.....	39,40

[illegible]

Basic Information

Characteristics of Slew Drives

- Refer to the table below for a guide to the safety factor to apply to your application. The load rating curves shown in this catalog are approximate and represent an application safety factor of 1.00.
To determine the required slew drives rating, multiply the applicable safety factor by the applied loads on the slew drives, and compare the resultant loads to the load rating curves. The load case of the application must be below the limit curve.

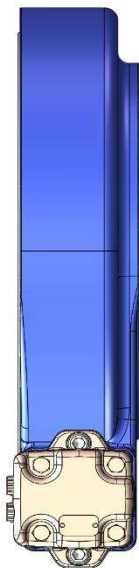
Low Applications	Safety factor
Tire mounted low duty construction	1.00
Low duty Index table	1.00
Low duty industrial manipulator or robot	1.00
Low duty hand operated mechanism	1.00
Low duty medical devices	1.00
Low duty aerial platforms	1.00
Welding positioners	1.00
Rotating signs, displays	1.00

Standard Applications	Safety factor
Track mounted light duty construction	1.10
Conveyors	1.10
Wastewater treatment	1.10
Capstans and turnstiles	1.10
Rotary tables	1.25
Scrap yard construction	1.25
Medium duty industrial manipulator or robot	1.25
Machines for building	1.25

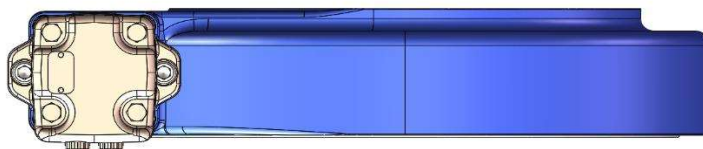
Heavy Applications	Safety factor
Forestry handling equipment	1.50
Heavy duty index tables and turntables	1.50
Excavators	1.50
Antennas	1.50
Machines tool	1.50
Bucket trailers	1.75
Wind turbine	2.0
Measurement technique	2.0

Basic Information

- Slew Drives can be installed in a vertical and horizontal position, but when the slew drive and the horizontal plane Angle is greater than 3 degrees.



Vertical installation



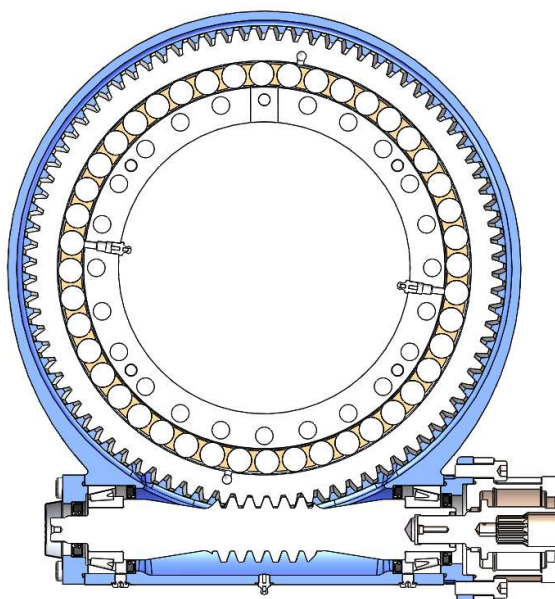
Horizontal installation, base upwards --- recommended installation direction for



Horizontal installation, base downwards --- there is a risk of water ingress when used outdoors

- All Slew Drives Are Pre-Lubricated
- Maximum Output Speed 1rpm.
- Standard Paint: For Corrosion Category C3-M. Color Ral 7016.

Structural Drawing of the slew drives



Basic Information

Storage

- During storage, please keep the packaging box of the reducer in the specified direction and store in the closed room to avoid moisture. In the closed packaging, the surface is corrosion-resistant and rust proof, which can last for about 5 months. If it needs to be stored for a longer time, please take special protection measures.

Handling

- It is not allowed to turn over the box when it is moved before unpacking.
- It is necessary to wear work gloves and operate carefully to avoid collision with the slew drives.
- After unpacking, two lifting rings are installed on the threaded holes on the outer ring of the reducer for lifting and handling.

Installation

- The structure where is going to be mount need to have some requirements considering a maximum flatness deviation. Check table below.

Raceway diameter (mm)	Permissible flatness deviation of the mounting surface (mm)	
	Single row ball	Double row ball
>500	0.10	0.07
>1000	0.15	0.20

- The slew drives shall be installed without load.
- Please carefully calculate the screw in length of the bolt, which should not be too long to cause interference or too short. Generally, the length of the bolt screwed into the screw hole shall not be less than 1.5 times of the nominal diameter of the bolt; if the bolt is screwed in too short, the performance of the bolt connection of the slew drives may be affected, and the safety risk may occur in serious cases;
- It is recommended to use bolts of grade 10.9 or above.
- It is recommended to use DIN25201 double fold lock washer or high strength flat washer, and it is not allowed to use spring washer.
- It is recommended to apply thread fastening adhesive at the threaded connection.

Basic Information

- The installation bolts should be tightened diagonally and crosswise. Tighten all bolts diagonally to 30% of the tightening torque, then repeat the diagonal tightening to 50% of the tightening torque, and finally to 100% of the tightening torque.
- After the bolt is tightened, please mark the connection of the bolt by marking, so as to check whether the bolt is loose in the future.
- Tightening torque table of mounting bolts (for reference only)

Bolt specification	Metric bolt	
	Tightening torque (Nm)	
	10.9 Grade	12.9 Grade
M8	33±3	45±6
M10	72±6	90±10
M12	120±10	150±20
M16	305±25	380±50
M18	415±35	521±70
M20	600±50	750±100

Maintenance

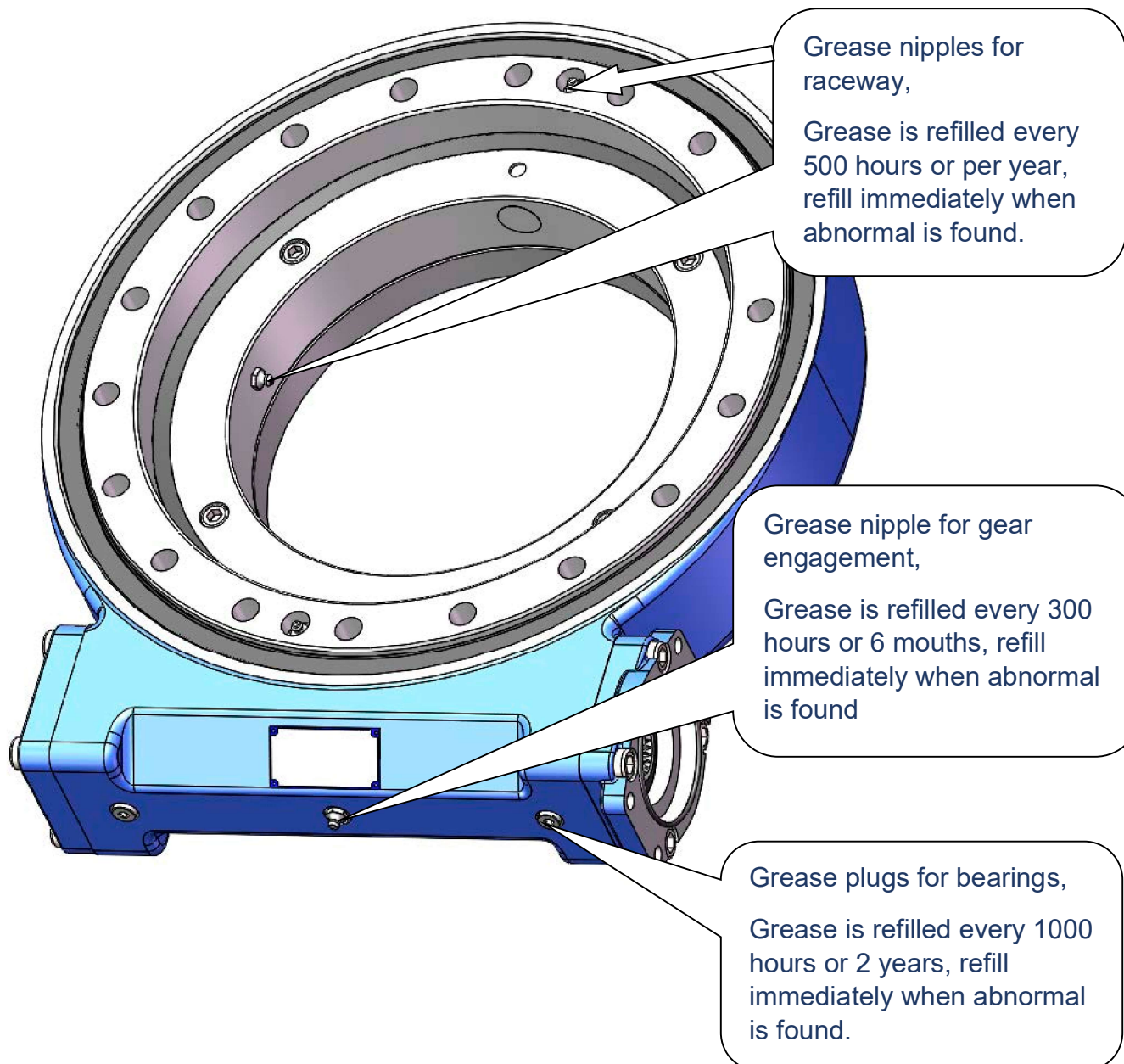
- During the installation process of the slew drives, the paint on the surface may be damaged. After the final assembly of the system, the slew drives needs to be repainted.
- In case of long-time rainy weather during installation, the exposed threaded holes shall be shielded.
- Check and re-tighten the bolts to the specified tightening torque after 2 weeks of operation.

Lubrication

- Slew drives are supplied with slewing ring raceway, screw worm and bearings pre-lubricated. They shall be greased again prior to initial operation and re-lubricated accordingly depending on working conditions.
- In case of abnormal noise, grease leakage during the use of this product, it is necessary to stop the machine immediately to check and add grease. Insufficient lubrication will shorten the service life of the reducer, and even cause the failure of the slew drives.
- The maintenance period, adding quantity and grease type of the slew drives are recommended according following information:

Basic Information

Lubrication of TD-E/TD-W series slew drives



Basic Information

- Lubrication cycle table of slew drives

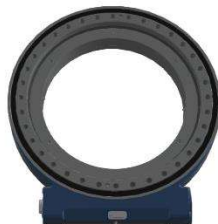
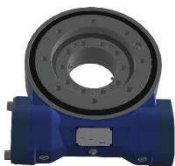
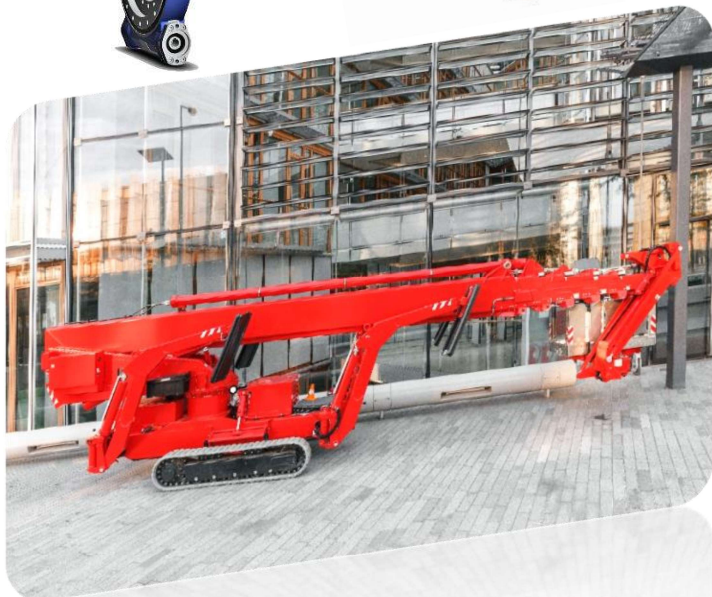
Lubrication part	Grease model	Grease volume (g)		
		7 " — 9 " Slew Drives	12 " — 17 " Slew Drives	21 " — 25 " Slew Drives
Raceway	Beslux Plex 778/A	20	30	50
Screw worm	Beslux Plex 778/A	90	120	150
Bearings	Beslux Plex 778/A	9	9	12

- Because the circumference of the raceway is very long, the slew drives is running slowly, and the grease is not flowing. It is difficult to grease.
It is necessary to add grease at multiple points or times.
 - Method 1: four grease nipples of inner and outer rings were located at different positions and filled with grease respectively.
 - Method 2: when the slew drives work, the outer ring is filled with grease at different angles at different time periods every day.
- Under extreme working conditions (drilling machines, steel mills, oil fields, etc.), the lubrication frequency should be appropriately increased.

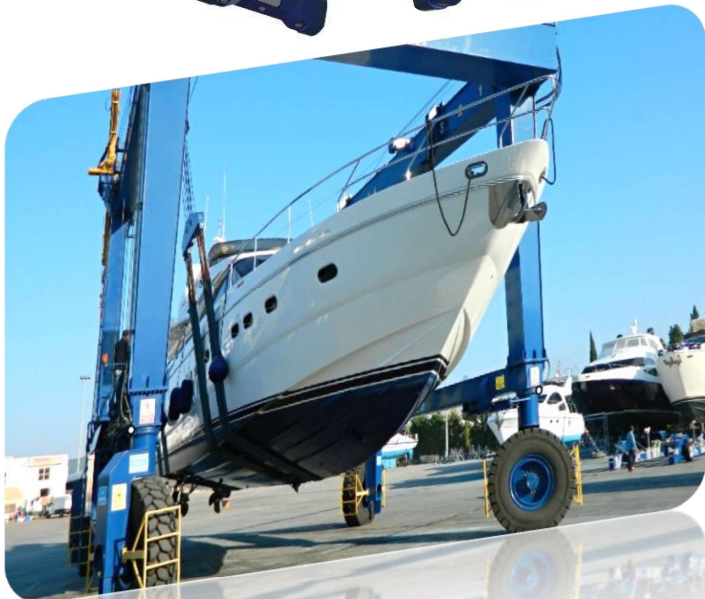
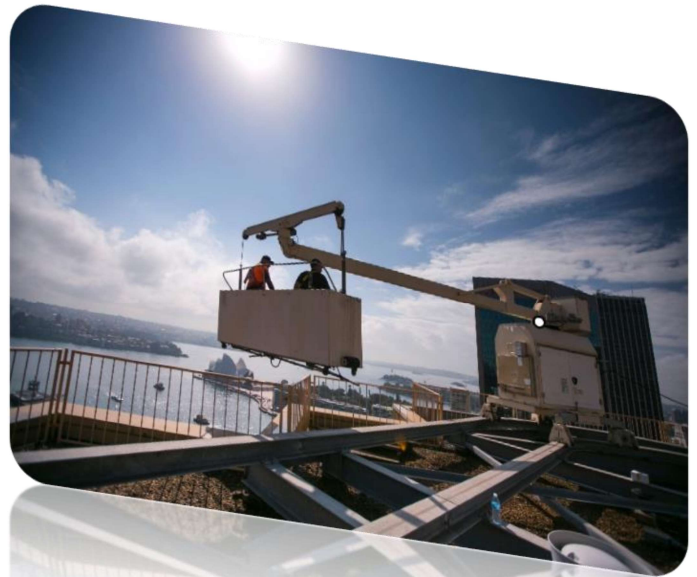
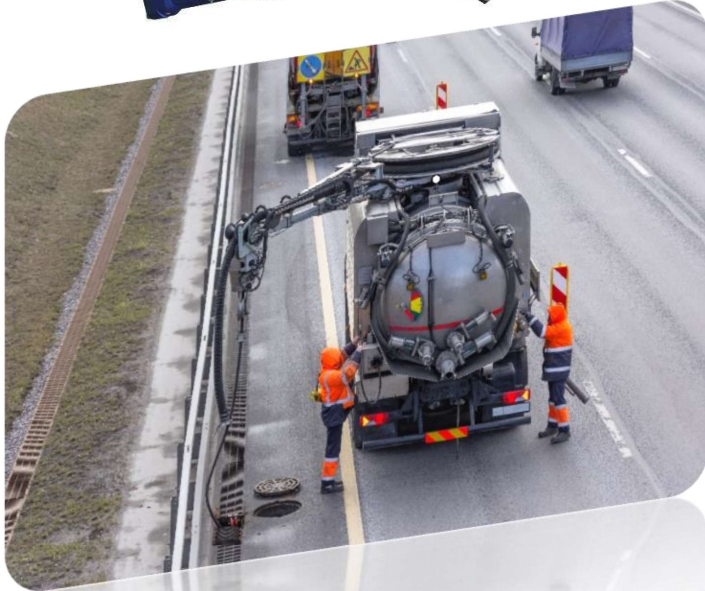
Compatibility Type Of Grease

Company	Raceway	Gear
BP	Energrease LS - EP2	Energrease LC 2
Mobilux	Mobilux EP2	Mobilgear OGL 461
SHELL	Alvania EPLF2	Malleus OGH
MOTUL/BECHEM	Rhus L 474/2	Berulit GA 400
ESSO	BEACON EP 2	Multi-Purpose Grease (Moly)
TOTAL FINA	Multis EP2 - Lical	Ceran AD
ELF	Epexa 2 / Epexelf 2	Cardrexa DC1
CASTROL	Spheerol EPL 2	Castrol LMX
ARAL	Aralub HLP2	Aralub MKA-Z 1

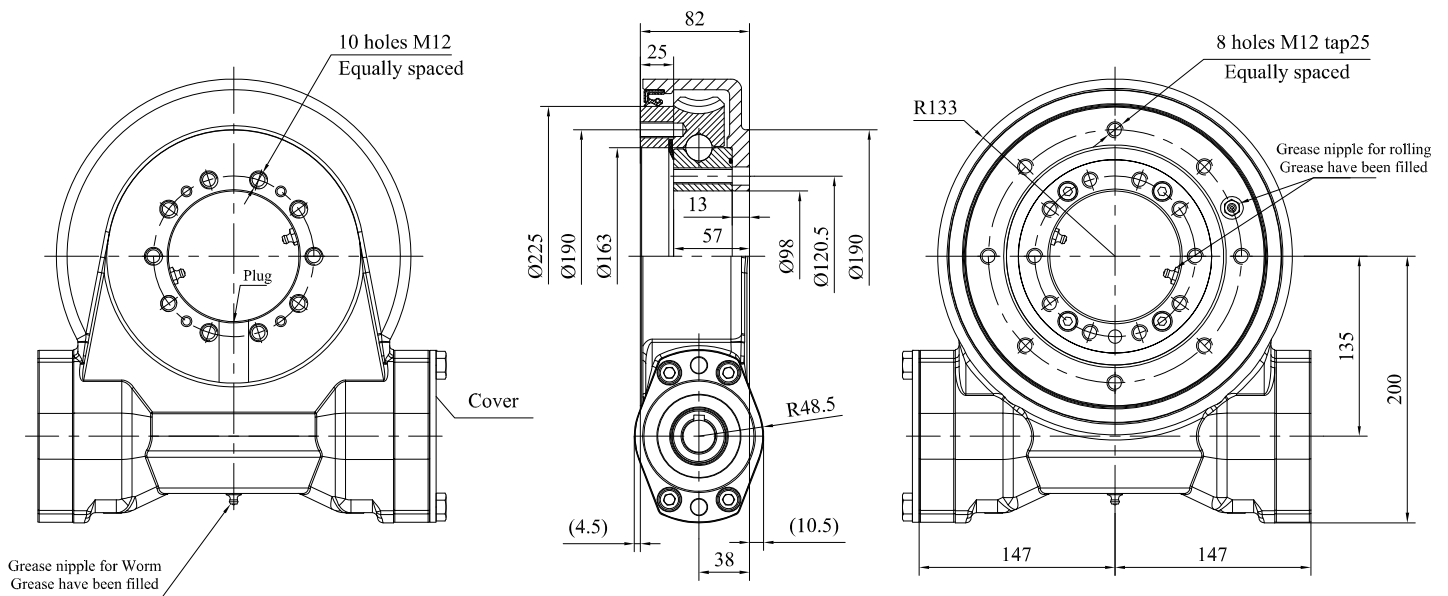
Type Of Application



Type Of Application

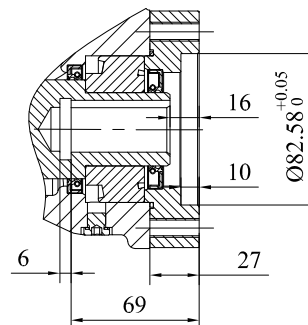
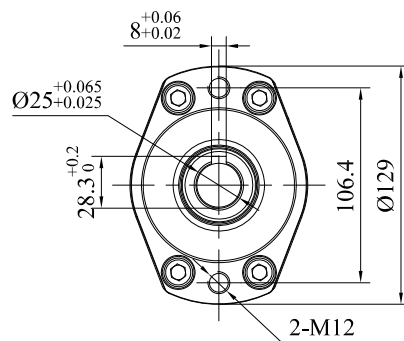


Slew Drive TD-E7



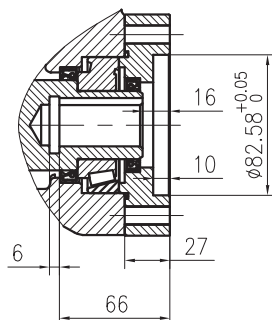
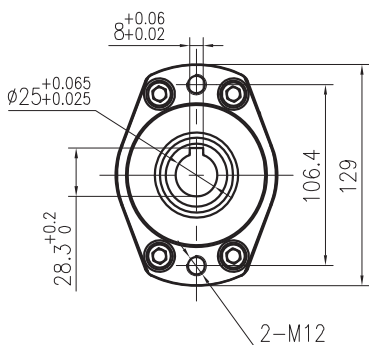
Input

Both ends can be fitted with motors

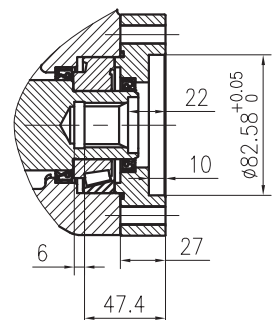
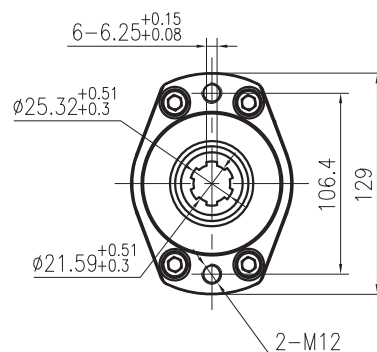


OPTION

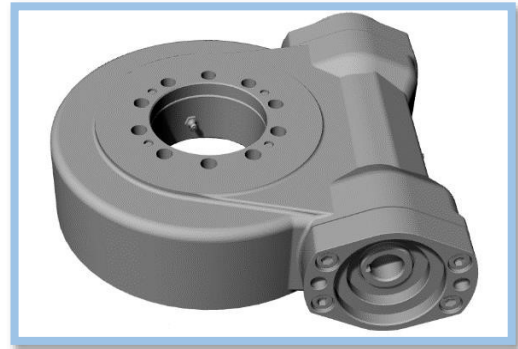
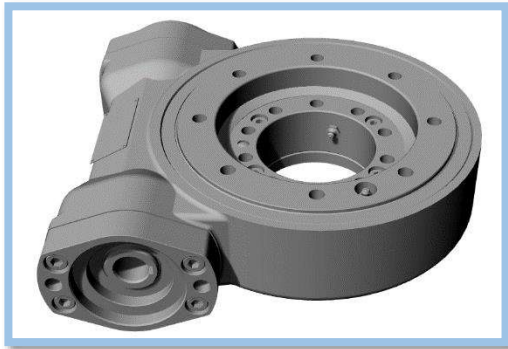
Input
Ø25 Hole



Input
6B Spline



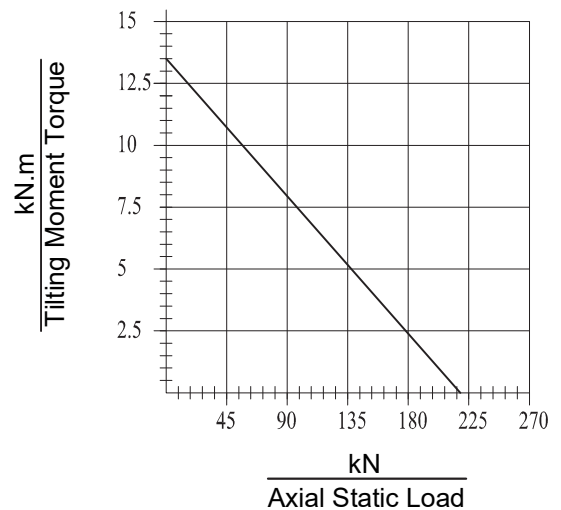
Slew Drive TD-E7



Slew Drives Performance Parameters

Nominal Torque	3.4kN.m
Maximum Torque	6.5kN.m
Gear Ratio	45:1
Backlash	0.17°
Efficiency	40%
Temperature	-30° / +80° C
Holding Torque	20kN.m
Axial Static Load	270kN
Radial Static Load	94kN
Axial Dynamic Load	97kN
Radial Dynamic Load	83kN
Tilting Moment Load	13.5kN.m

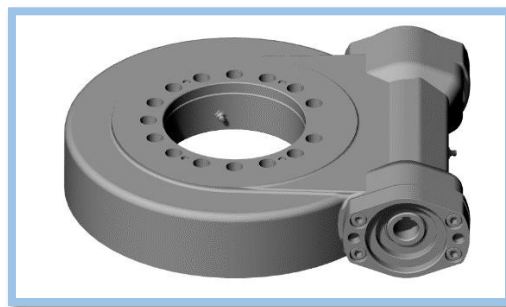
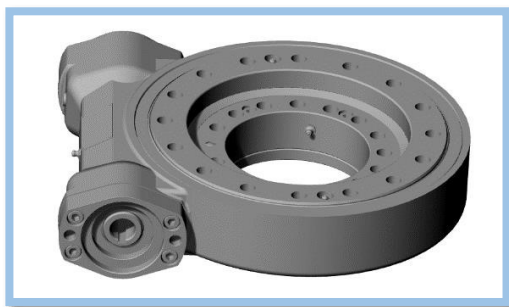
Axial Static & Tilting Moment



Notes:

- Please Be Sure To Remain Under This Curve
- This Drawing Is Just For Your Reference
- All Slew Drives Are Pre-Lubricated.
- Maximum Output Speed 1rpm.
- Standard Paint: For Corrosion Category C3-M. Color Ral 7016.
- Protection: IP 65
- Worm Symmetrical.

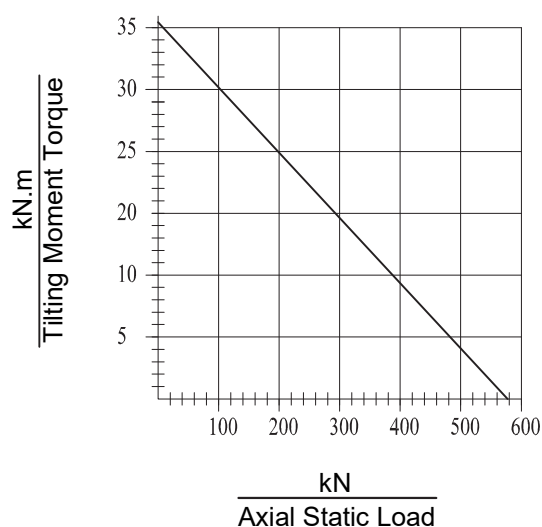
Slew Drive TD-E9



Slew Drives Performance Parameters

Nominal Torque	6.3kN.m
Maximum Torque	9.5kN.m
Gear Ratio	62:1
Backlash	0.15°
Efficiency	40%
Temperature	-30° / +80° C
Holding Torque	34.8kN.m
Axial Static Load	578kN
Radial Static Load	215kN
Axial Dynamic Load	154kN
Radial Dynamic Load	132kN
Tilting Moment Load	35.6kN.m

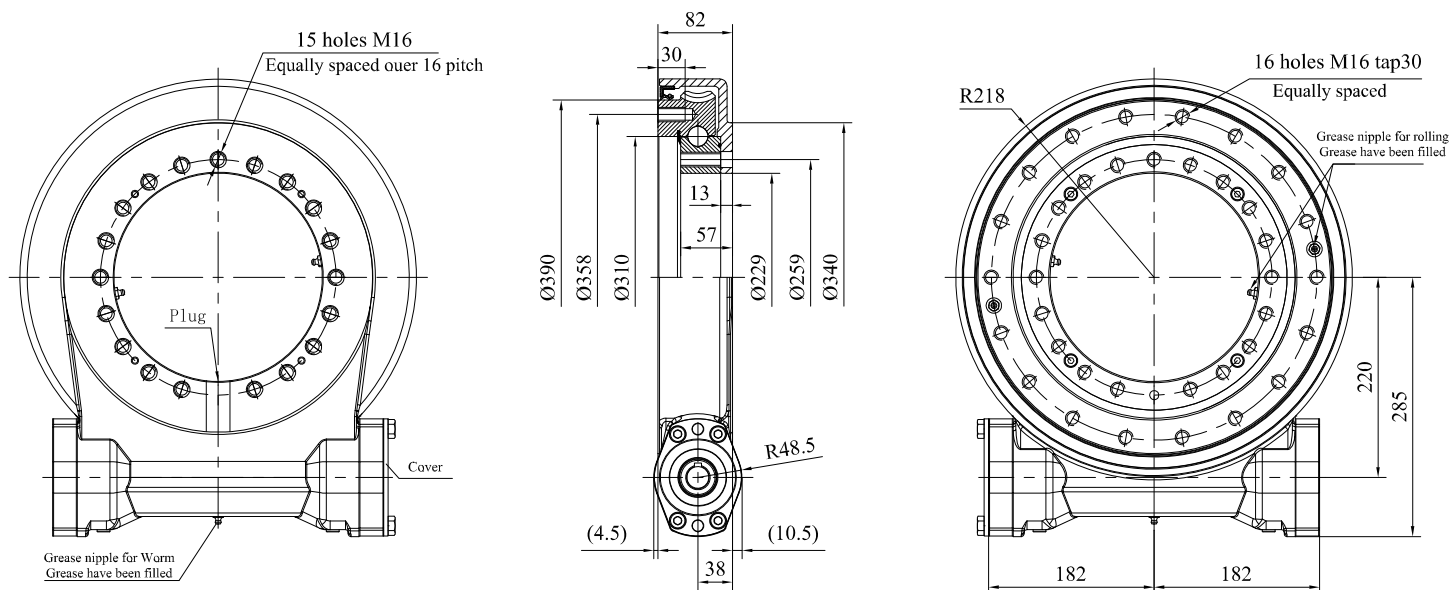
Axial Static & Tilting Moment



Notes:

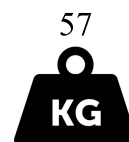
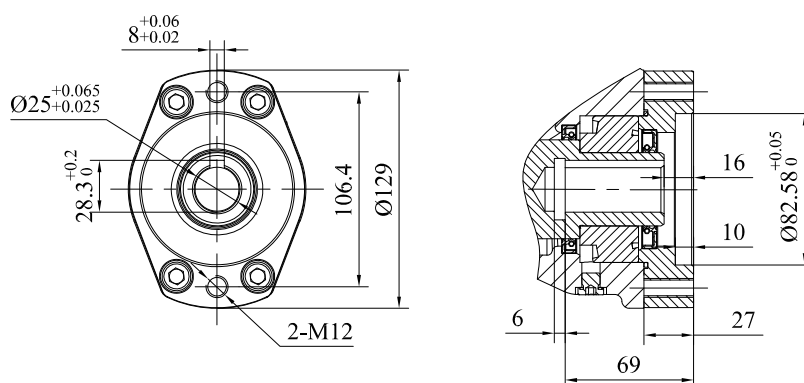
- Please Be Sure To Remain Under This Curve
- This Drawing Is Just For Your Reference
- All Slew Drives Are Pre-Lubricated.
- Maximum Output Speed 1rpm.
- Standard Paint: For Corrosion Category C3-M. Color Ral 7016.
- Protection: IP 65
- Worm Symmetrical.

Slew Drive TD-E12



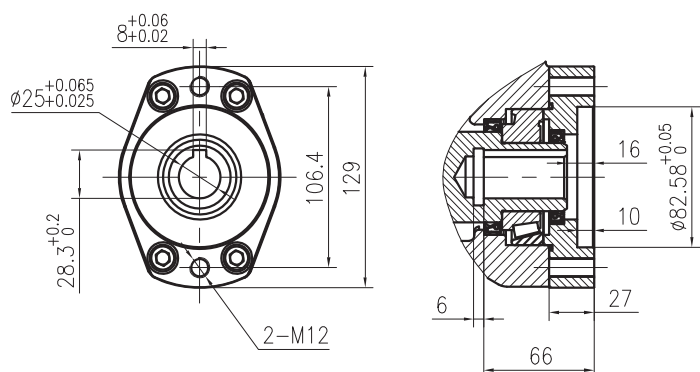
Input

Both ends can be fitted with motors

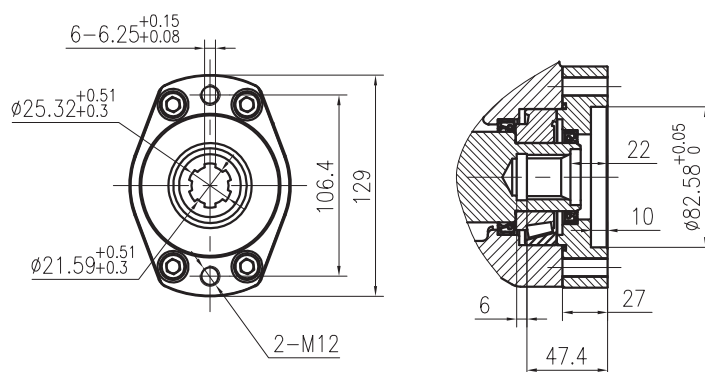


OPTION

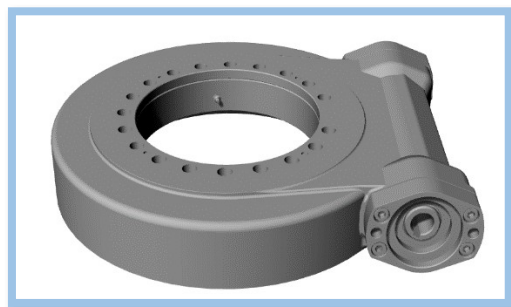
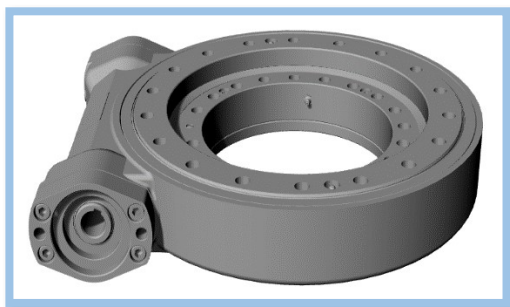
Input
Ø25 Hole



Input
6B Spline



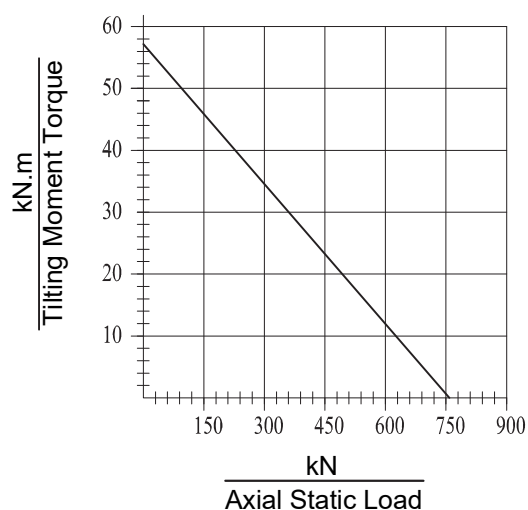
Slew Drive TD-E12



Slew Drives Performance Parameters

Nominal Torque	7.8kN.m
Maximum Torque	11.8kN.m
Gear Ratio	79:1
Backlash	0.15°
Efficiency	40%
Temperature	-30° / +80° C
Holding Torque	43kN.m
Axial Static Load	760kN
Radial Static Load	280kN
Axial Dynamic Load	190kN
Radial Dynamic Load	145kN
Tilting Moment Load	57kN.m

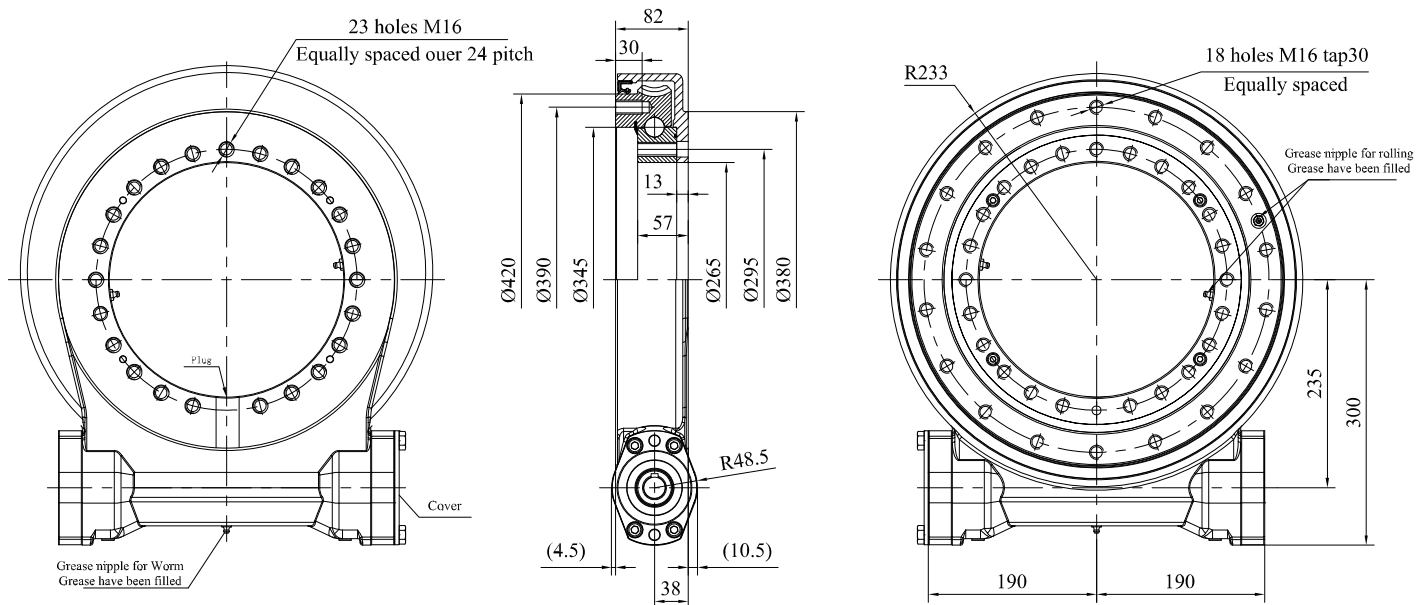
Axial Static & Tilting Moment



Notes:

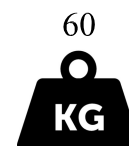
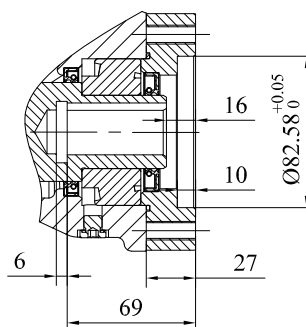
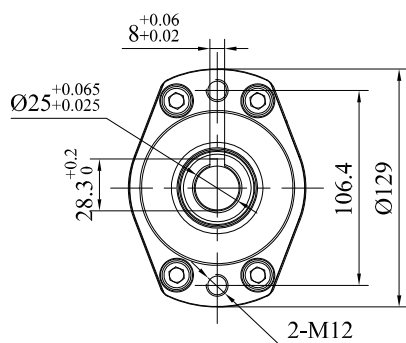
- Please Be Sure To Remain Under This Curve
- This Drawing Is Just For Your Reference
- All Slew Drives Are Pre-Lubricated.
- Maximum Output Speed 1rpm.
- Standard Paint: For Corrosion Category C3-M. Color Ral 7016.
- Protection: IP 65
- Worm Symmetrical.

Slew Drive TD-E14



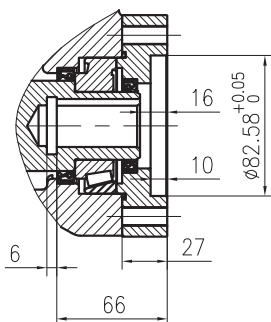
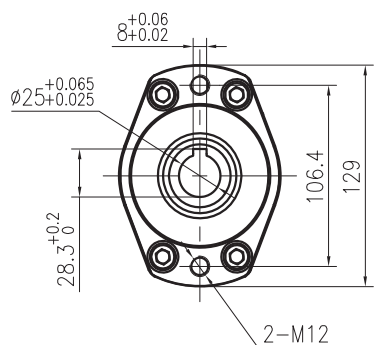
Input

Both ends can be fitted with motors

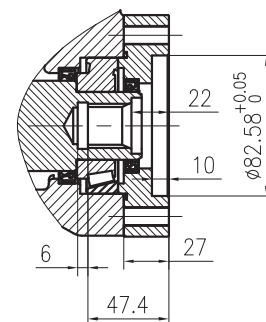
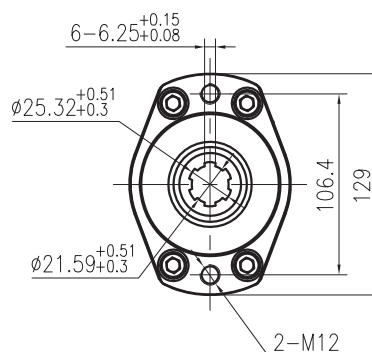


OPTION

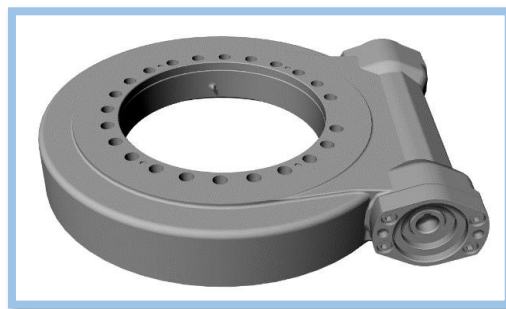
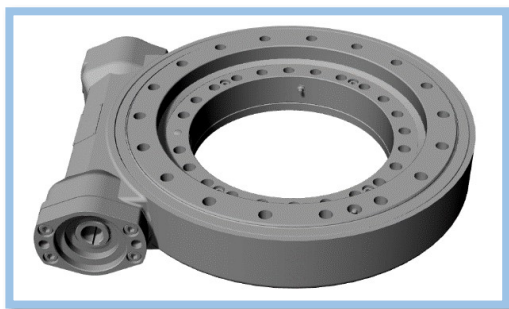
Input
 $\varnothing 25$ Hole



Input
6B Spline



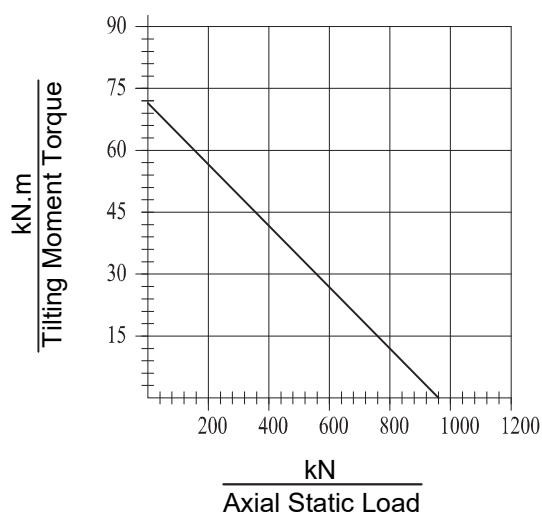
Slew Drive TD-E14



Slew Drives Performance Parameters

Nominal Torque	10.2kN.m
Maximum Torque	12.9kN.m
Gear Ratio	86:1
Backlash	0.13°
Efficiency	40%
Temperature	-30° / +80° C
Holding Torque	43kN.m
Axial Static Load	960kN
Radial Static Load	360kN
Axial Dynamic Load	230kN
Radial Dynamic Load	200kN
Tilting Moment Load	71.2kN.m

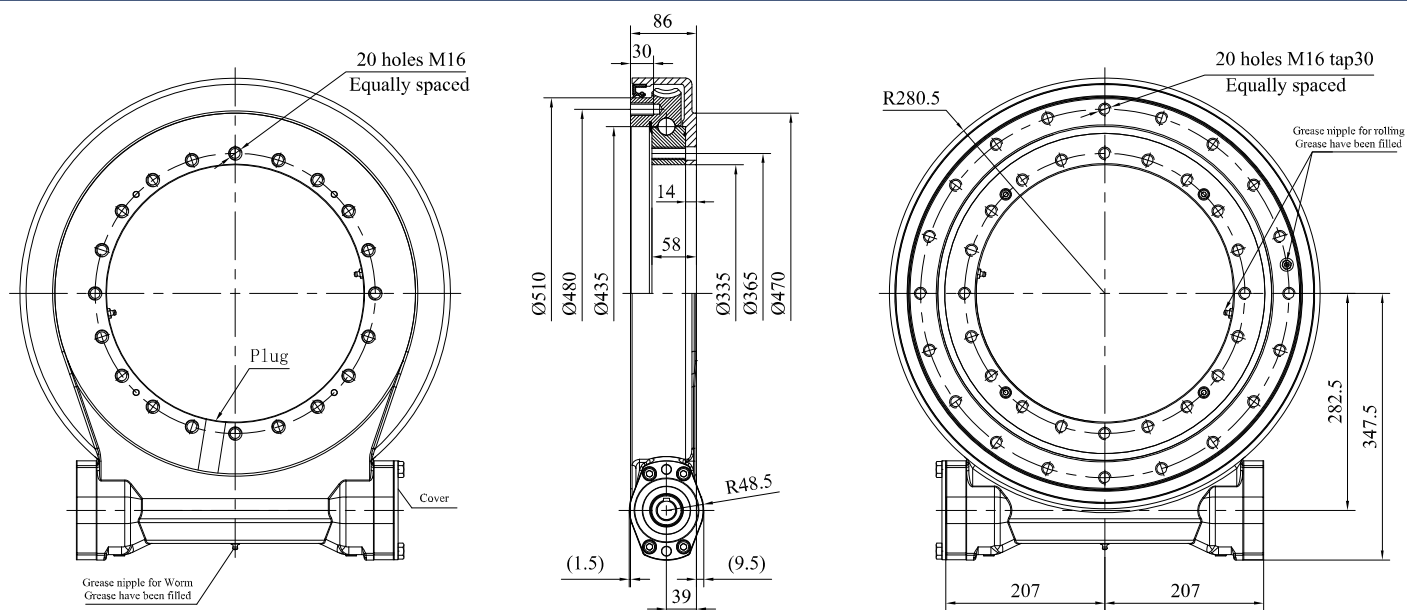
Axial Static & Tilting Moment



Notes:

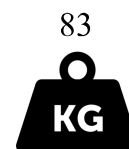
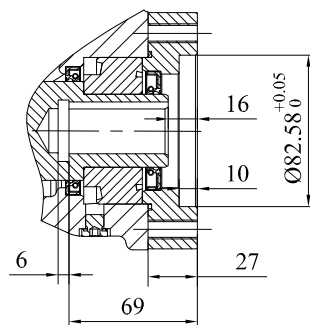
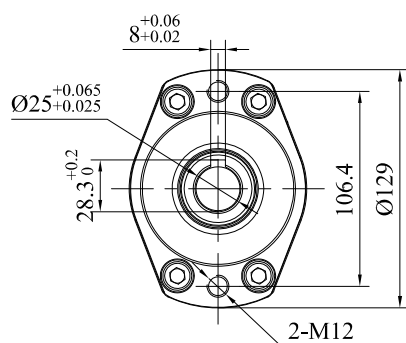
- Please Be Sure To Remain Under This Curve
- This Drawing Is Just For Your Reference
- All Slew Drives Are Pre-Lubricated.
- Maximum Output Speed 1rpm.
- Standard Paint: For Corrosion Category C3-M. Color Ral 7016.
- Protection: IP 65
- Worm Symmetrical.

Slew Drive TD-E17



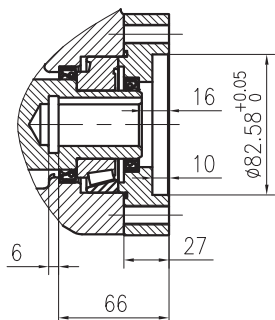
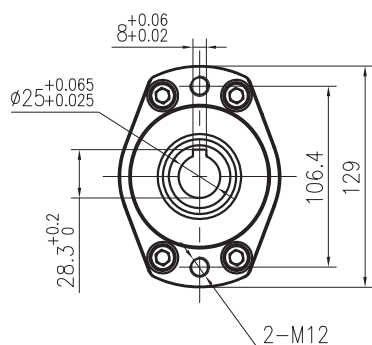
Input

Both ends can be fitted with motors

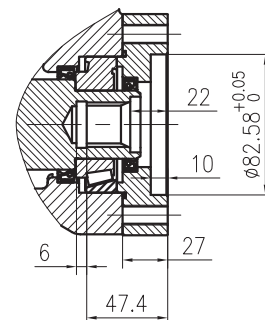
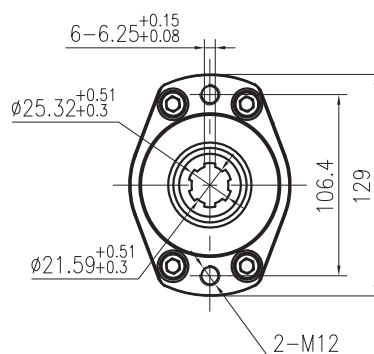


OPTION

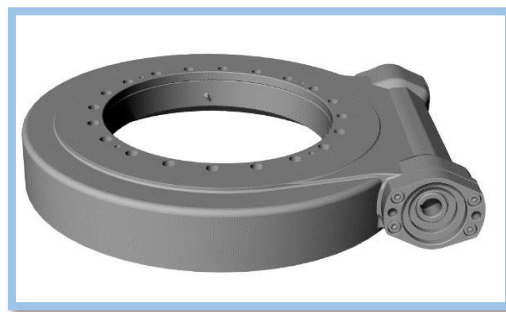
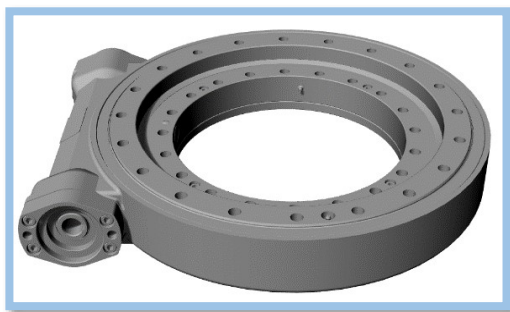
Input
Ø25 Hole



Input
6B Spline



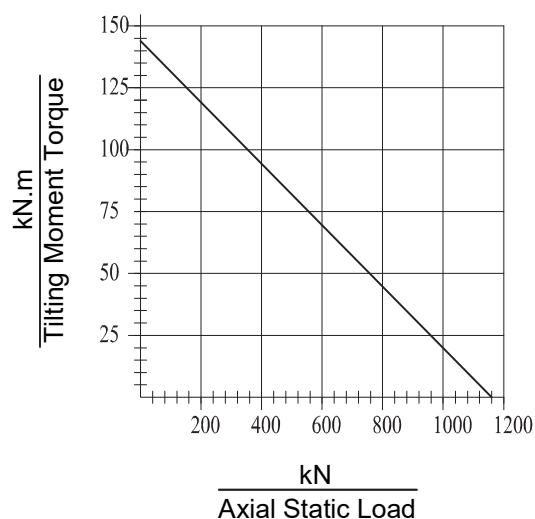
Slew Drive TD-E17



Slew Drives Performance Parameters

Nominal Torque	14.7kN.m
Maximum Torque	15.6kN.m
Gear Ratio	104:1
Backlash	0.1°
Efficiency	40%
Temperature	-30° / +80° C
Holding Torque	65kN.m
Axial Static Load	1166kN
Radial Static Load	435kN
Axial Dynamic Load	280kN
Radial Dynamic Load	231kN
Tilting Moment Load	143kN.m

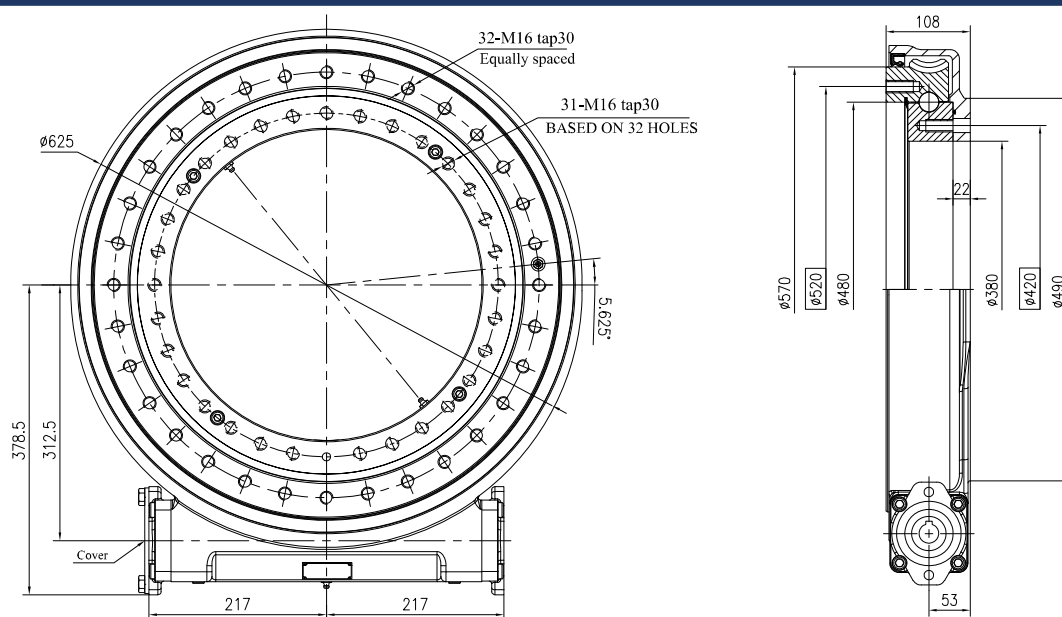
Axial Static & Tilting Moment



Notes:

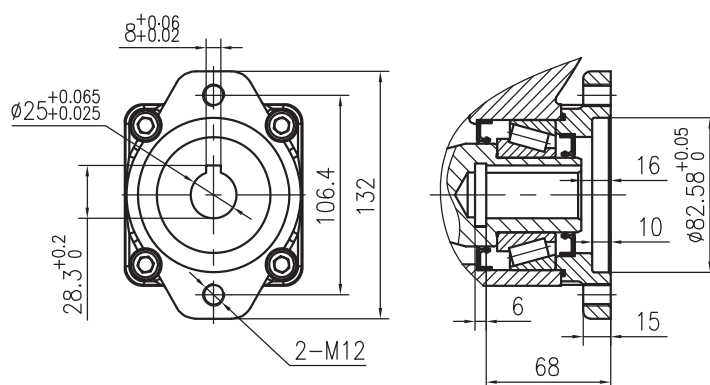
- Please Be Sure To Remain Under This Curve
- This Drawing Is Just For Your Reference
- All Slew Drives Are Pre-Lubricated.
- Maximum Output Speed 1rpm.
- Standard Paint: For Corrosion Category C3-M. Color Ral 7016.
- Protection: IP 65
- Worm Symmetrical.

Slew Drive TD-E19



Input

Both ends can be fitted with motors

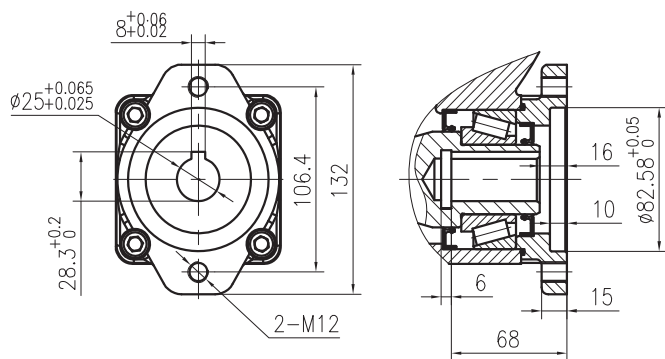


116

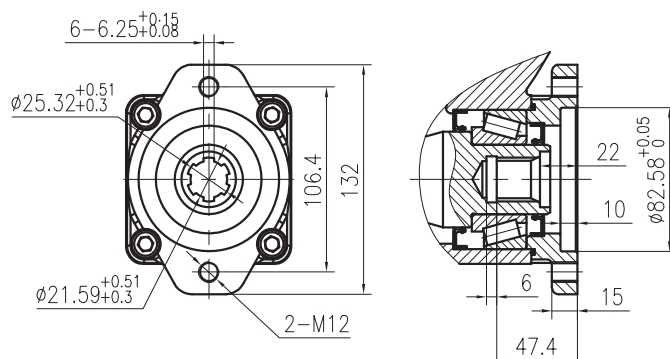


OPTION

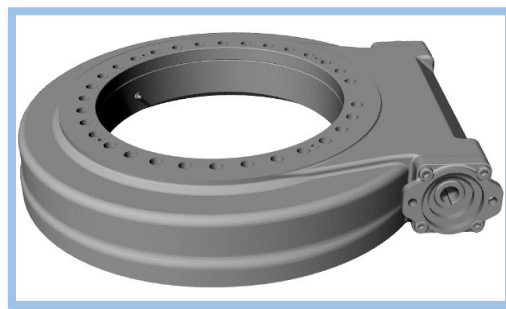
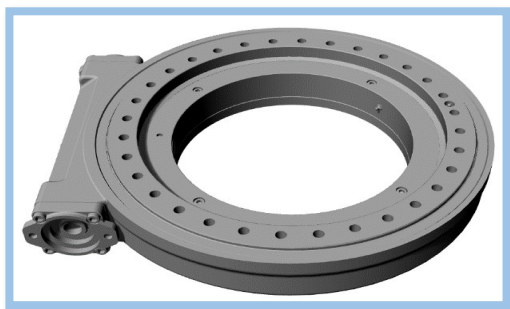
Input
 $\phi 25$ Hole



Input
6B Spline



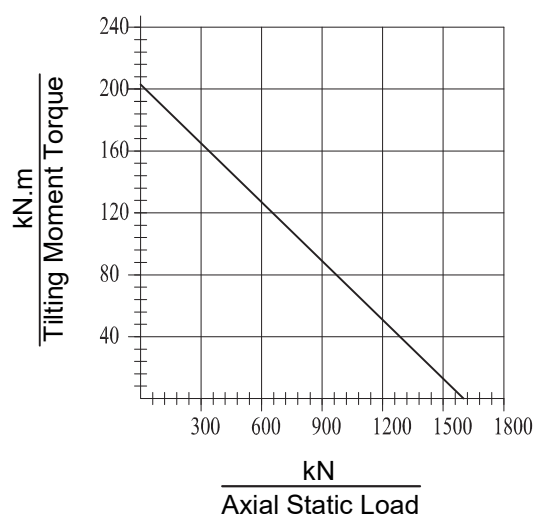
Slew Drive TD-E19



Slew Drives Performance Parameters

Nominal Torque	18.5kN.m
Maximum Torque	27kN.m
Gear Ratio	94:1
Backlash	0.1°
Efficiency	40%
Temperature	-30° / +80° C
Holding Torque	85kN.m
Axial Static Load	1800kN
Radial Static Load	675kN
Axial Dynamic Load	290kN
Radial Dynamic Load	250kN
Tilting Moment Load	210kN.m

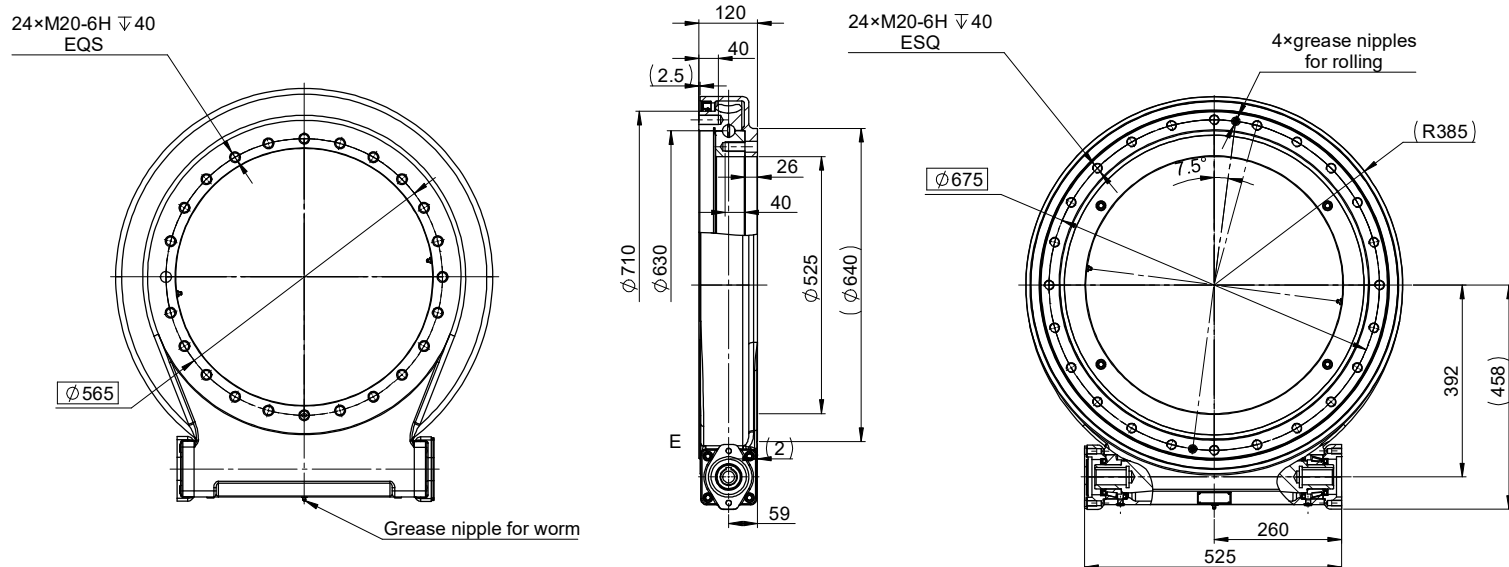
Axial Static & Tilting Moment



Notes:

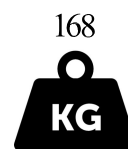
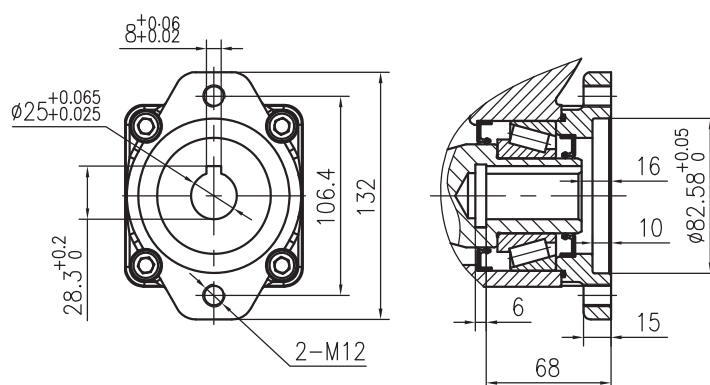
- Please Be Sure To Remain Under This Curve
- This Drawing Is Just For Your Reference
- All Slew Drives Are Pre-Lubricated.
- Maximum Output Speed 1rpm.
- Standard Paint: For Corrosion Category C3-M. Color Ral 7016.
- Protection: IP 65
- Worm Symmetrical.

Slew Drive TD-E25



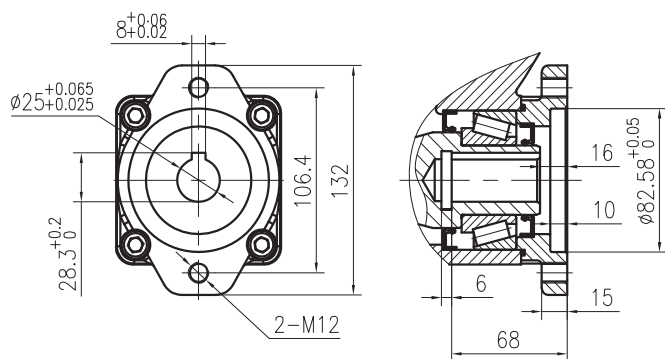
Input

Both ends can be fitted with motors

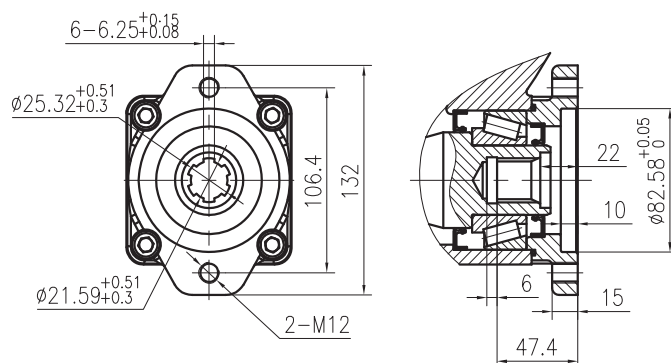


OPTION

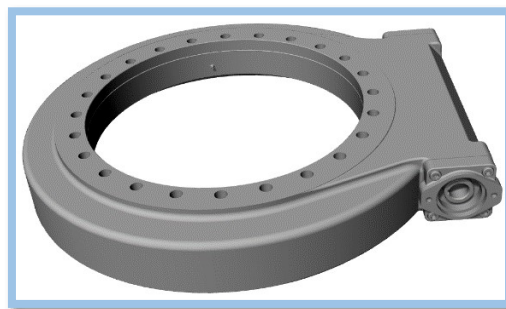
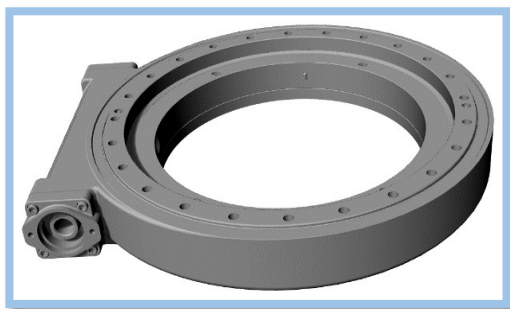
Input
 $\phi 25$ Hole



Input
6B Spline



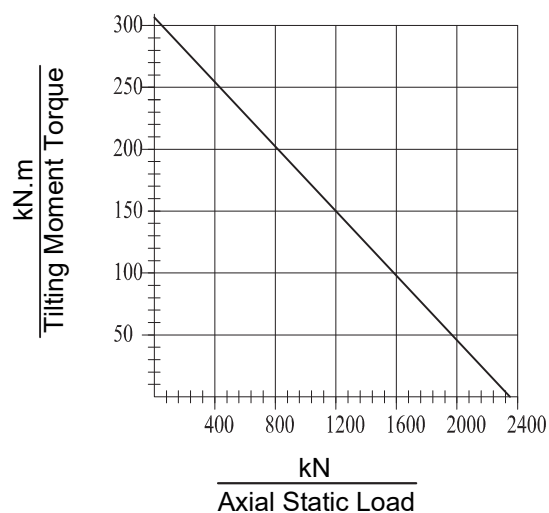
Slew Drive TD-E25



Slew Drives Performance Parameters

Nominal Torque	27kN.m
Maximum Torque	42.8kN.m
Gear Ratio	45:1
Backlash	0.17°
Efficiency	40%
Temperature	-30° / +80° C
Holding Torque	158.3kN.m
Axial Static Load	2360kN
Radial Static Load	945kN
Axial Dynamic Load	875kN
Radial Dynamic Load	215kN
Tilting Moment Load	310kN.m

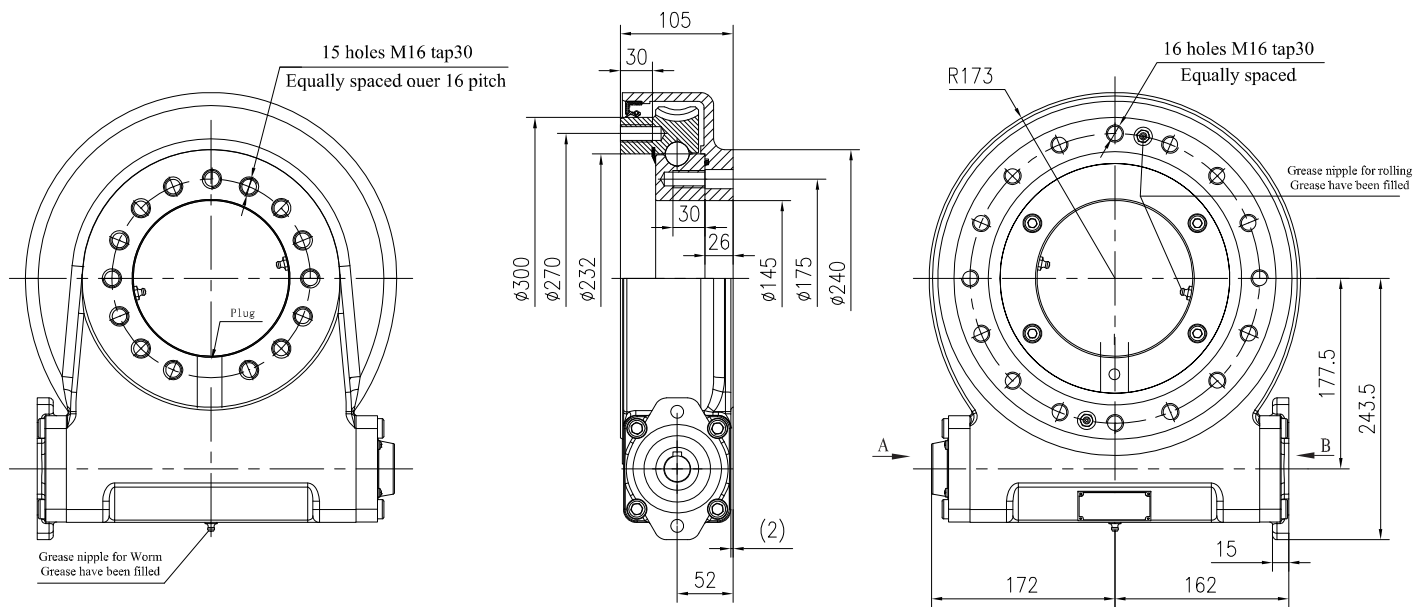
Axial Static & Tilting Moment



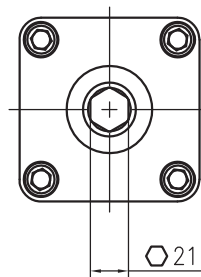
Notes:

- Please Be Sure To Remain Under This Curve
- This Drawing Is Just For Your Reference
- All Slew Drives Are Pre-Lubricated.
- Maximum Output Speed 1rpm.
- Standard Paint: For Corrosion Category C3-M. Color Ral 7016.
- Protection: IP 65
- Worm Symmetrical.

Slew Drive TD-W9

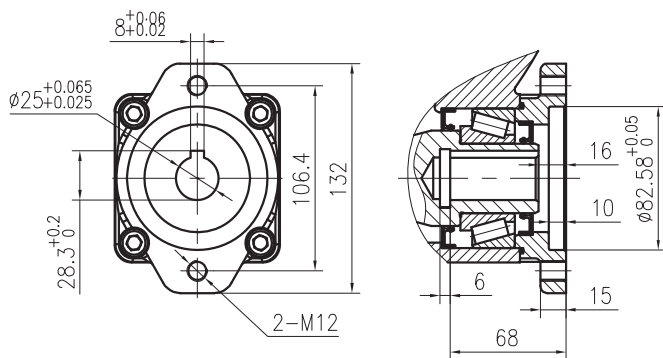


VIEW A
WITH HEX

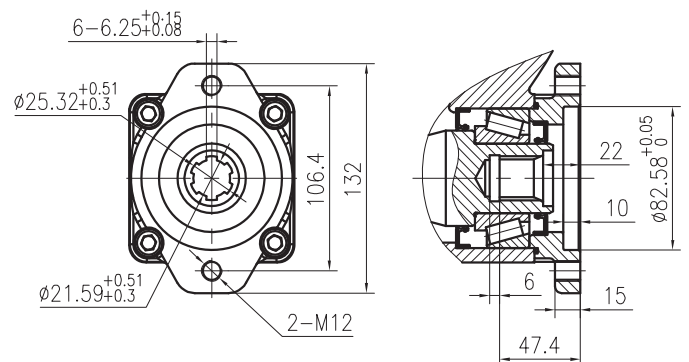


VIEW B OPTION

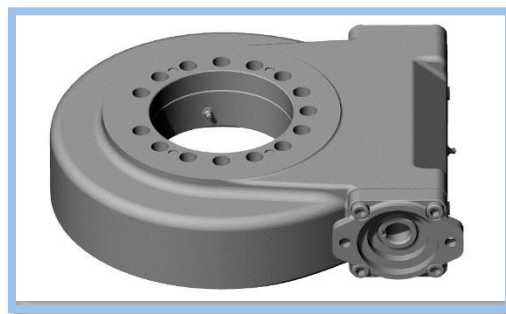
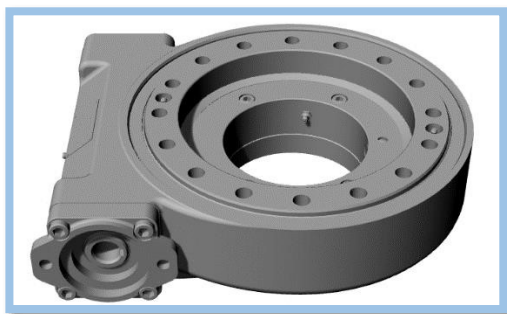
Input
Ø25 Hole



Input
6B Spline



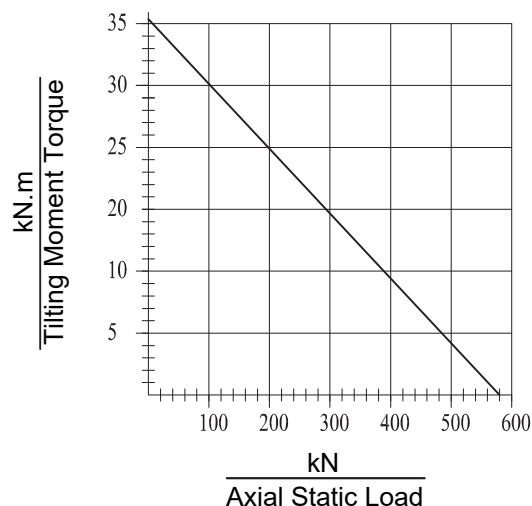
Slew Drive TD-W9



Slew Drives Performance Parameters

Nominal Torque	6.3kN.m
Maximum Torque	9.5kN.m
Gear Ratio	62:1
Backlash	0.15°
Efficiency	40%
Temperature	-30° / +80° C
Holding Torque	38.7kN.m
Axial Static Load	578kN
Radial Static Load	215kN
Axial Dynamic Load	136kN
Radial Dynamic Load	115kN
Tilting Moment Load	35.6kN.m

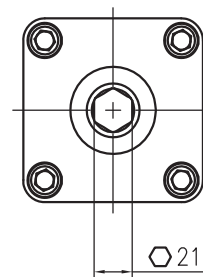
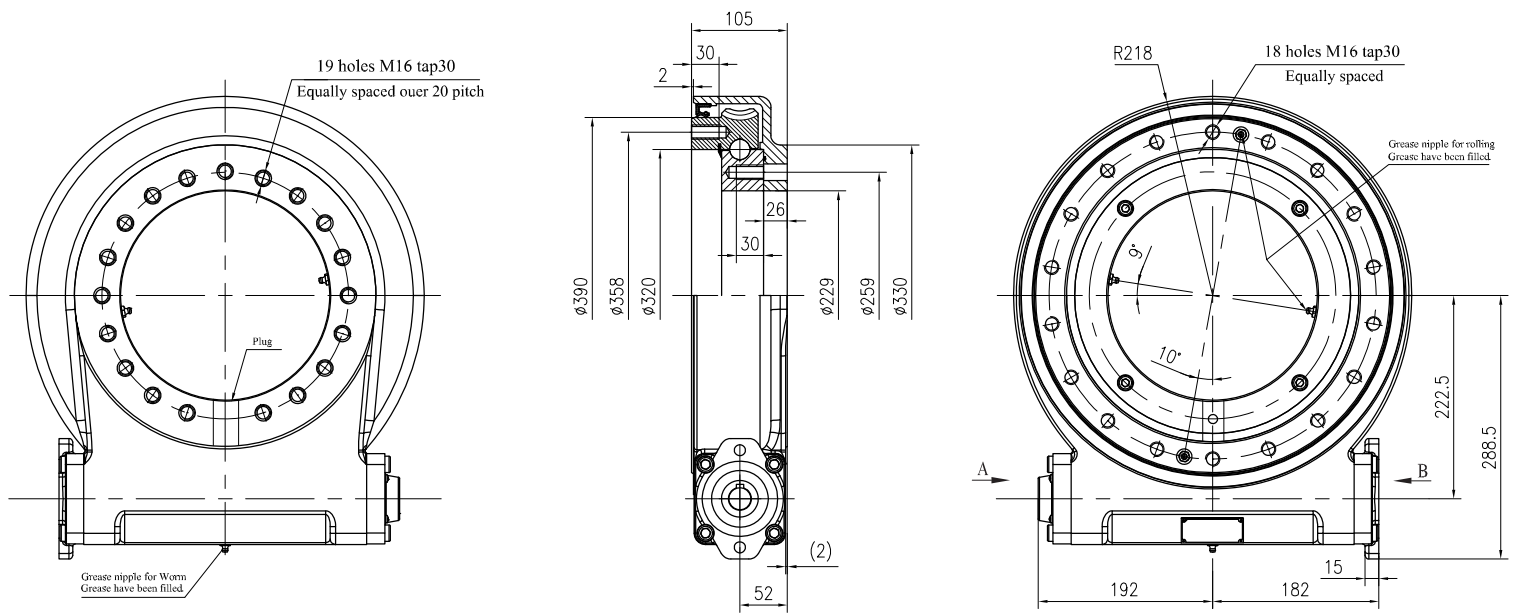
Axial Static & Tilting Moment



Notes:

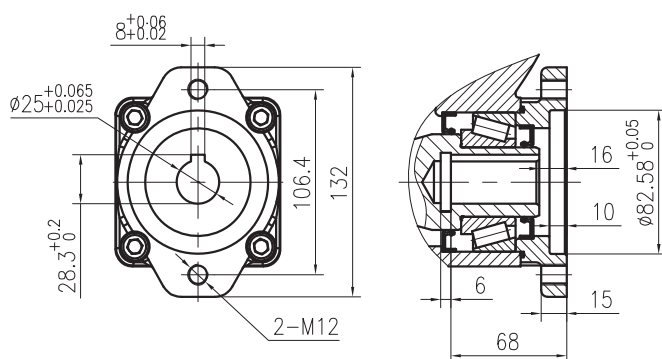
- Please Be Sure To Remain Under This Curve
- This Drawing Is Just For Your Reference
- All Slew Drives Are Pre-Lubricated.
- Maximum Output Speed 1rpm.
- Standard Paint: For Corrosion Category C3-M. Color Ral 7016.
- Protection: IP 65

Slew Drive TD-W12

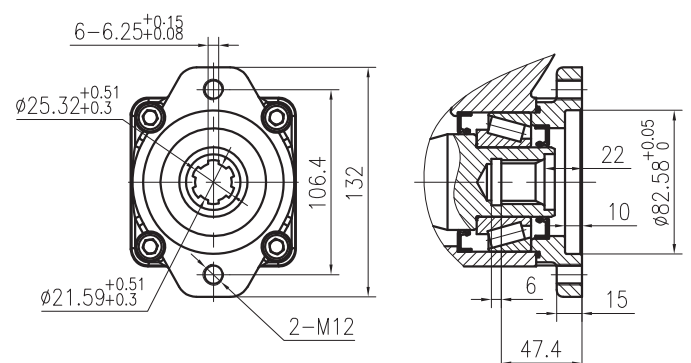


VIEW B OPTION

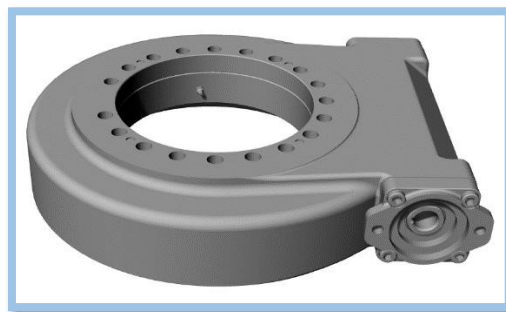
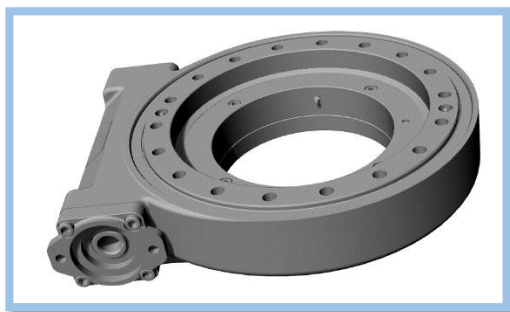
Input
Ø25 Hole



Input
6B Spline



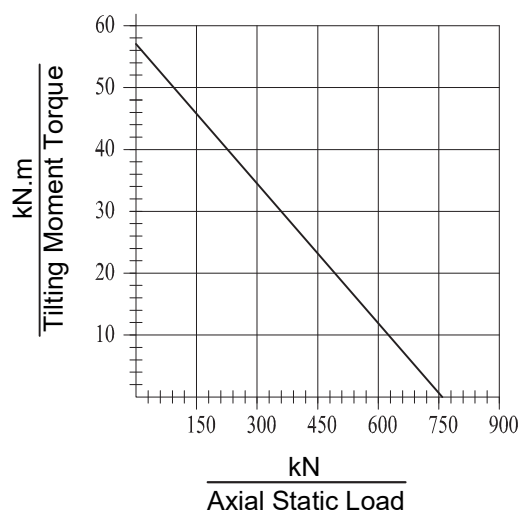
Slew Drive TD-W12



Slew Drives Performance Parameters

Nominal Torque	7.8kN.m
Maximum Torque	11.8kN.m
Gear Ratio	79:1
Backlash	0.15°
Efficiency	40%
Temperature	-30° / +80° C
Holding Torque	43kN.m
Axial Static Load	760kN
Radial Static Load	280kN
Axial Dynamic Load	190kN
Radial Dynamic Load	148kN
Tilting Moment Load	57kN.m

Axial Static & Tilting Moment



Notes:

- Please Be Sure To Remain Under This Curve
- This Drawing Is Just For Your Reference
- All Slew Drives Are Pre-Lubricated.
- Maximum Output Speed 1rpm.
- Standard Paint: For Corrosion Category C3-M. Color Ral 7016.
- Protection: IP 65

Technical drawings of the worm gear assembly, showing front, side, and rear views with dimensions and labels.

Front View (Left):

- 23 holes M16 tap30
- Equally spaced over 24 pitch
- Plug
- Grease nipple for Worm
- Grease have been filled

Side View (Middle):

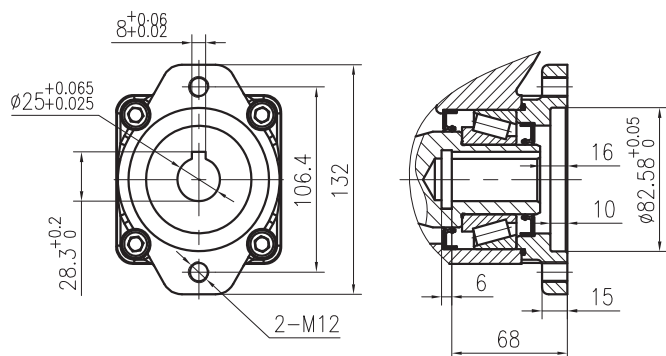
- 105
- 30
- 2
- Ø420
- Ø390
- Ø352
- 26
- 30
- Ø265
- Ø295
- Ø360
- (2)
- 52

Rear View (Right):

- R233
- 18 holes M16 tap30
- Equally spaced
- Grease nipple for Worm
- Grease have been filled
- 7.5°
- 10°
- 237.5
- 303.5
- 15
- 200
- 190
- A
- B

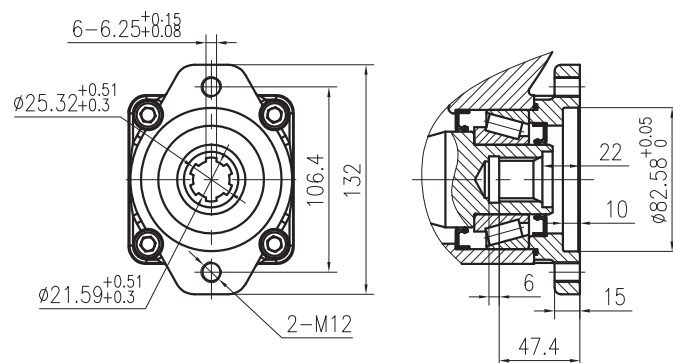
73
KG

Input
Ø25 Hole

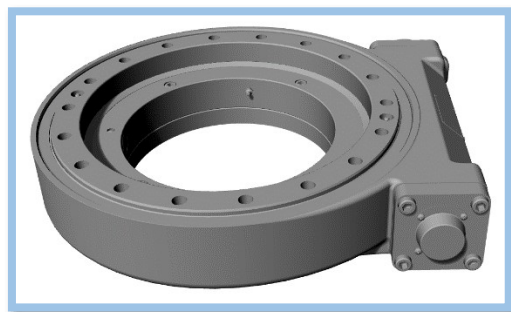
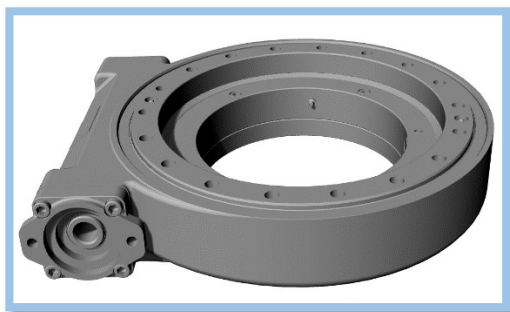


Input

6B Spline



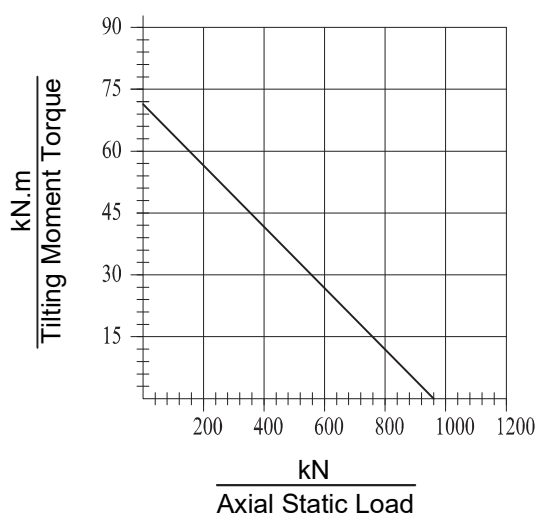
Slew Drive TD-W14



Slew Drives Performance Parameters

Nominal Torque	8.6kN.m
Maximum Torque	12.9kN.m
Gear Ratio	86:1
Backlash	0.13°
Efficiency	40%
Temperature	-30° / +80° C
Holding Torque	48kN.m
Axial Static Load	960kN
Radial Static Load	360kN
Axial Dynamic Load	230kN
Radial Dynamic Load	200kN
Tilting Moment Load	71.2kN.m

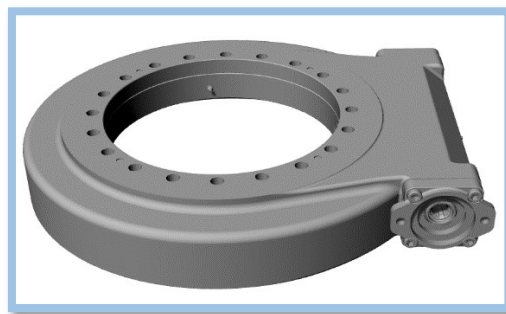
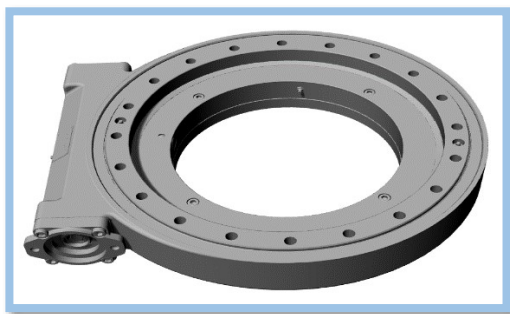
Axial Static & Tilting Moment



Notes:

- Please Be Sure To Remain Under This Curve
- This Drawing Is Just For Your Reference
- All Slew Drives Are Pre-Lubricated.
- Maximum Output Speed 1rpm.
- Standard Paint: For Corrosion Category C3-M. Color Ral 7016.
- Protection: IP 65

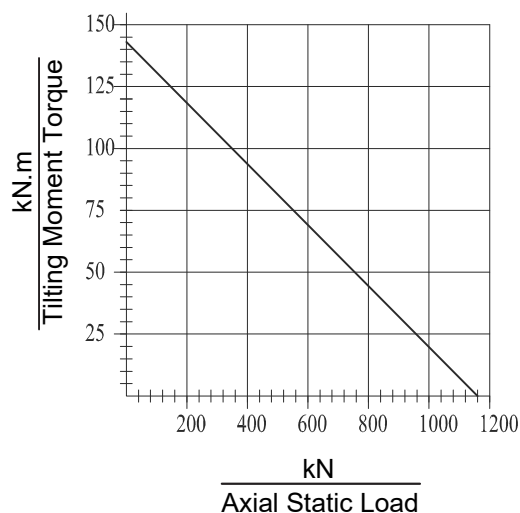
Slew Drive TD-W17



Slew Drives Performance Parameters

Nominal Torque	10.5kN.m
Maximum Torque	15.6kN.m
Gear Ratio	104:1
Backlash	0.1°
Efficiency	40%
Temperature	-30° / +80° C
Holding Torque	72.3kN.m
Axial Static Load	1166kN
Radial Static Load	435kN
Axial Dynamic Load	280kN
Radial Dynamic Load	231kN
Tilting Moment Load	143kN.m

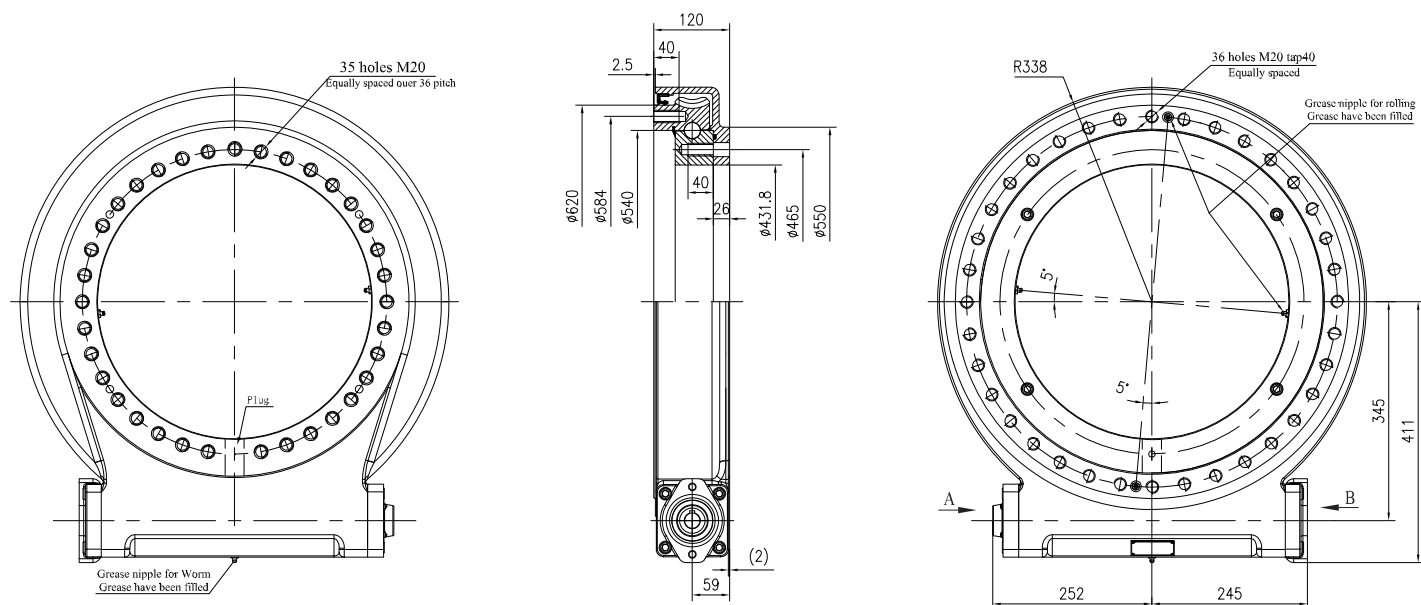
Axial Static & Tilting Moment



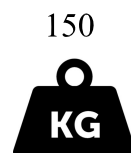
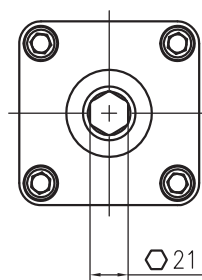
Notes:

- Please Be Sure To Remain Under This Curve
- This Drawing Is Just For Your Reference
- All Slew Drives Are Pre-Lubricated.
- Maximum Output Speed 1rpm.
- Standard Paint: For Corrosion Category C3-M. Color Ral 7016.
- Protection: IP 65

Slew Drive TD-W21

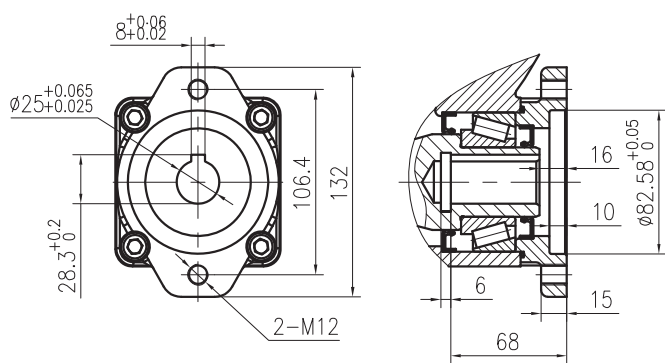


VIEW A
WITH HEX

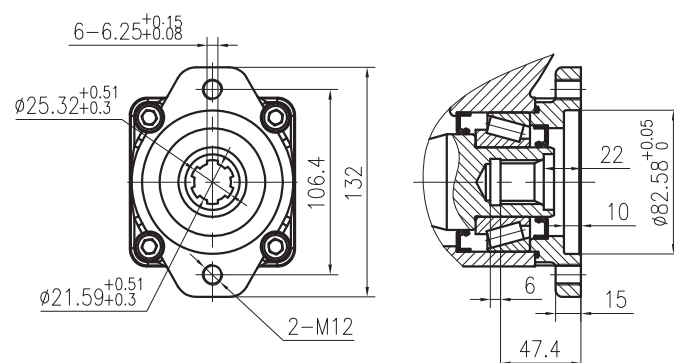


VIEW B OPTION

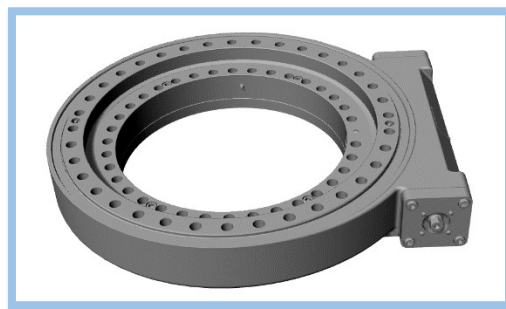
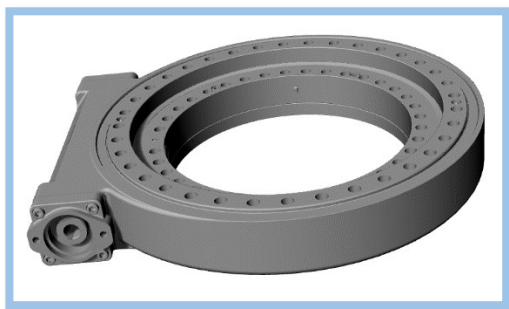
Input
Ø25 Hole



Input
6B Spline



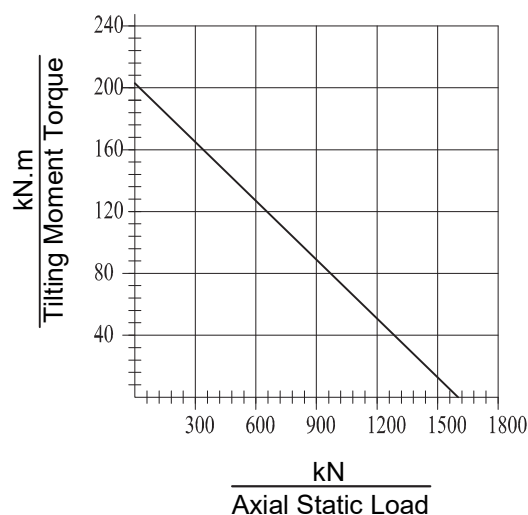
Slew Drive TD-W21



Slew Drives Performance Parameters

Nominal Torque	23kN.m
Maximum Torque	34.5kN.m
Gear Ratio	90:1
Backlash	0.1°
Efficiency	40%
Temperature	-30° / +80° C
Holding Torque	105.8kN.m
Axial Static Load	1598kN
Radial Static Load	640kN
Axial Dynamic Load	385kN
Radial Dynamic Load	335kN
Tilting Moment Load	203kN.m

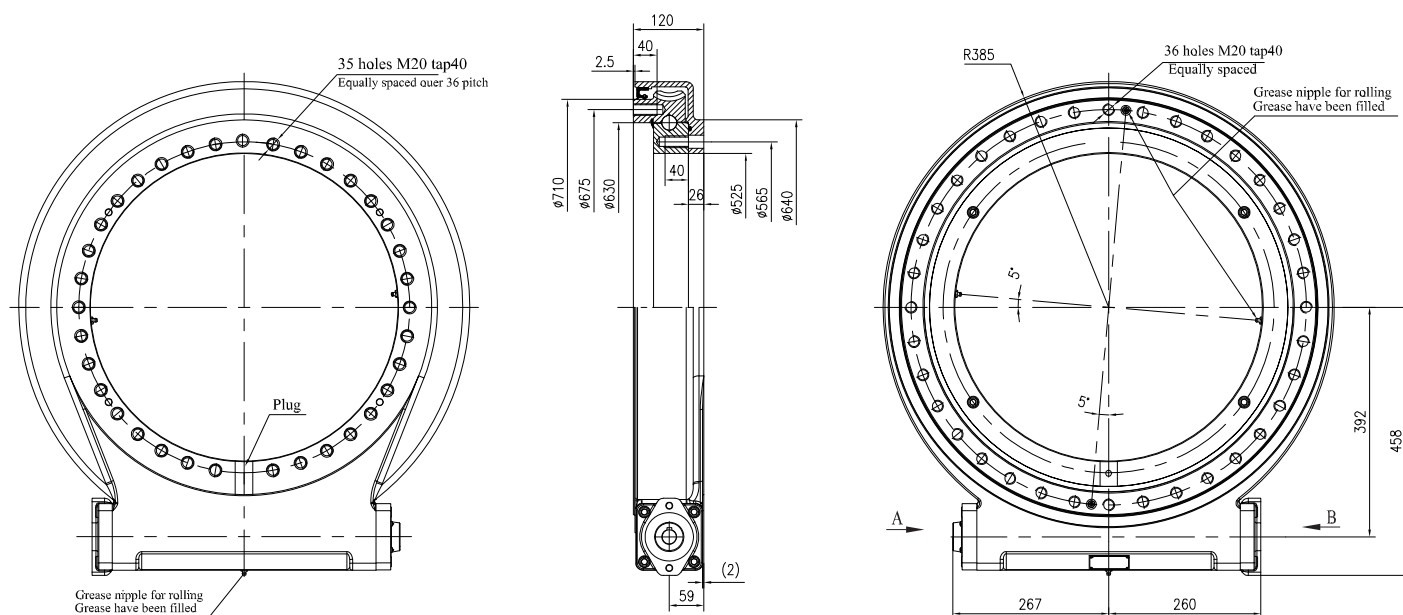
Axial Static & Tilting Moment



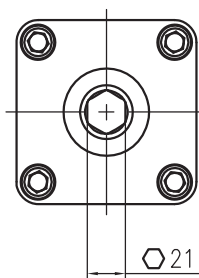
Notes:

- Please Be Sure To Remain Under This Curve
- This Drawing Is Just For Your Reference
- All Slew Drives Are Pre-Lubricated.
- Maximum Output Speed 1rpm.
- Standard Paint: For Corrosion Category C3-M. Color Ral 7016.
- Protection: IP 65

Slew Drive TD-W25

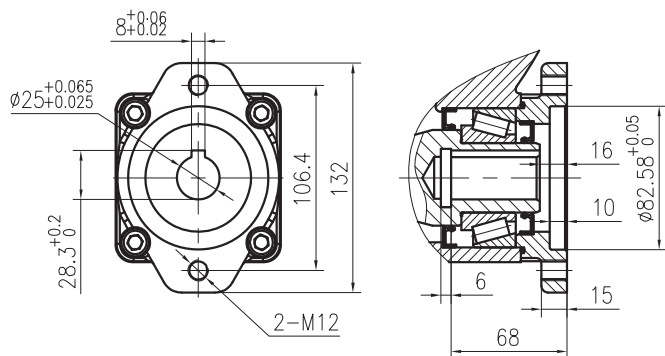


VIEW A
WITH HEX

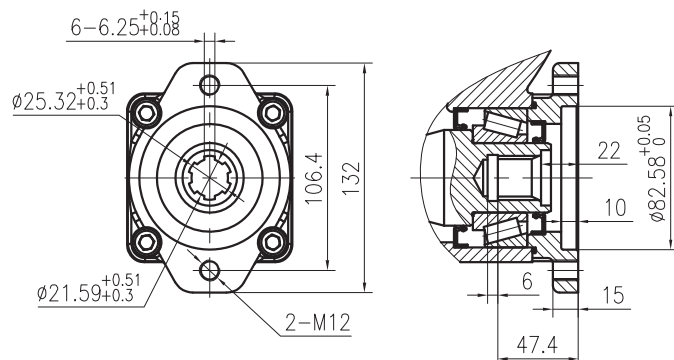


VIEW B OPTION

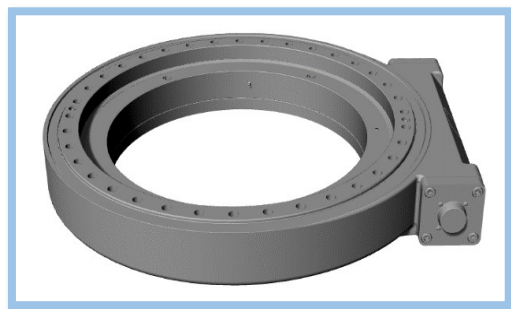
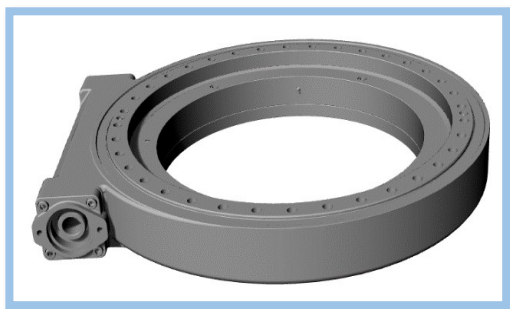
Input
Ø25 Hole



Input
6B Spline



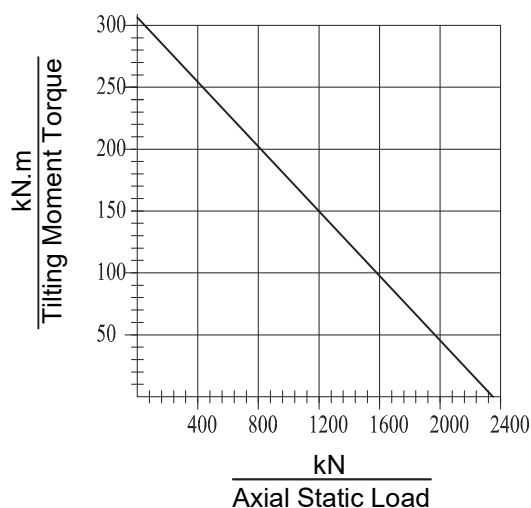
Slew Drive TD-W25



Slew Drives Performance Parameters

Nominal Torque	27kN.m
Maximum Torque	40kN.m
Gear Ratio	104:1
Backlash	0.1°
Efficiency	40%
Temperature	-30° / +80° C
Holding Torque	158.3kN.m
Axial Static Load	2360kN
Radial Static Load	945kN
Axial Dynamic Load	590kN
Radial Dynamic Load	470kN
Tilting Moment Load	310kN.m

Axial Static & Tilting Moment

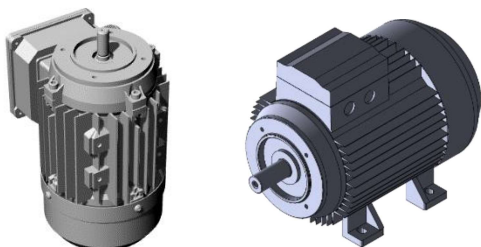


Notes:

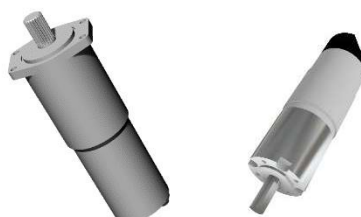
- Please Be Sure To Remain Under This Curve
- This Drawing Is Just For Your Reference
- All Slew Drives Are Pre-Lubricated.
- Maximum Output Speed 1rpm.
- Standard Paint: For Corrosion Category C3-M. Color Ral 7016.
- Protection: IP 65

Accessories

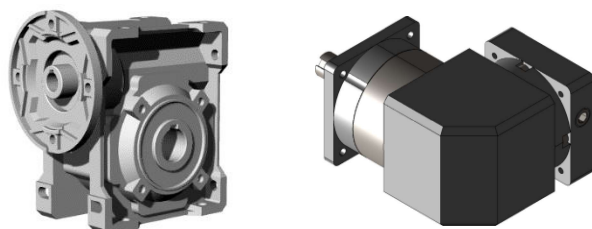
AC Motors



DC Motors



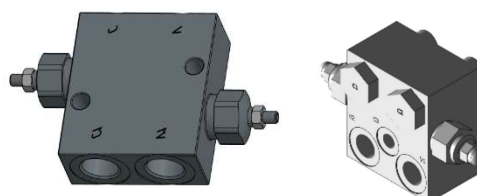
Gear Boxes



Hydraulic Motors



Hydraulic Valve



Technical form

Technical form

Customer details :				
Company :			Address:	
Contact person :				
Phone number :				
E-mail :				
Material details :				
Application description :				
New application :	Yes <input type="checkbox"/>	No <input type="checkbox"/>		
Exchangeable with existing :	Yes <input type="checkbox"/>	No <input type="checkbox"/>		
Slewing ring denomination :	Ref :			
Slew drive denomination :	Ref :			
Working position :	Vertical <input type="checkbox"/>	Horizontal <input type="checkbox"/>	Inclined <input type="checkbox"/>	
Hours of work:		Cycles:		
Speed :	rpm	Maximal angle of rotation :		
Slewing direction :	One direction only <input type="checkbox"/>	Alternating direction <input type="checkbox"/>		
Continous rotation without interruption <input type="checkbox"/>	Interrupted rotation <input type="checkbox"/>			
Load :				
Loads acting		Normal load	Maximum load	Test load
Axial load	Fax [kN]			
Radial	Frad [kN]			
Tilting moment	MK[kNm]			
Duty cycle	E(%)			
Normal speed	n[min-1]			
Maximum speed	nmax [min-1]			
Dimensions (mm / inch)				
Outside diameter		Inside diameter	Overall height	Raceway diameter
Gear description :				
External gear <input type="checkbox"/>		Internal gear <input type="checkbox"/>	No gearing <input type="checkbox"/>	
Tooth from :		Modul / DP:	Contact angle :	
		Pinion	Geared ring	
Number of teeth -z				
Profile correction -xm				
Gear width -b				
Addendum coefficient x				
Center distance				
Gear teeh hardened		yes <input type="checkbox"/>	no <input type="checkbox"/>	
Type of hardening		tooth flanks <input type="checkbox"/>	tooth contour <input type="checkbox"/>	
Tooth flank direction :		right <input type="checkbox"/>	left <input type="checkbox"/>	
Additional requirements :				

Technical form

Type of material			
Material	<input type="checkbox"/> not specified	<input type="checkbox"/> C45	<input type="checkbox"/> 42CrMo4
Heat treatment	<input type="checkbox"/> normalized	<input type="checkbox"/> quenched and tempered	

Special requirements :			
Seals are required	<input type="checkbox"/>	Extremely dirty	<input type="checkbox"/>
Oil lubrication	<input type="checkbox"/>	No grease lubrication	<input type="checkbox"/>

Location specification of grease holes			
Outer race	Outer diameter <input type="checkbox"/>	Mounting site <input type="checkbox"/>	Other <input type="checkbox"/>
Inner race	Inner diameter <input type="checkbox"/>	Mounting site <input type="checkbox"/>	Other <input type="checkbox"/>
High temperature (>50 °C)	<input type="checkbox"/>	Low temperature (<-25°C)	<input type="checkbox"/>
Max temperature :	<input type="text"/> °C	Min.temperature :	<input type="text"/> °C
Safety factor :	<input type="text"/>	Application factor:	<input type="text"/>
Remarks:			

Offer details	
Quantity required	pcs.
Annual quantity required	pcs./year
Delivery term	

Other :

Thank you for interes !

