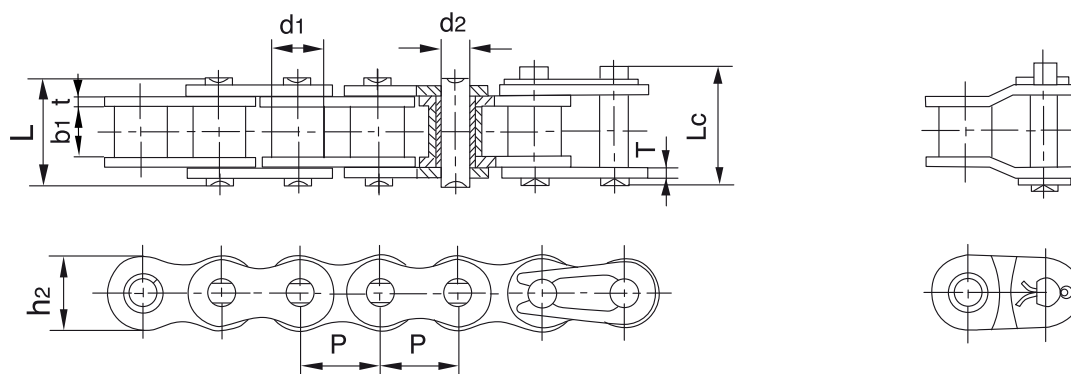


# Cadenas de Rodillos Simples / SERIE B



Cadenas de rodillo simple



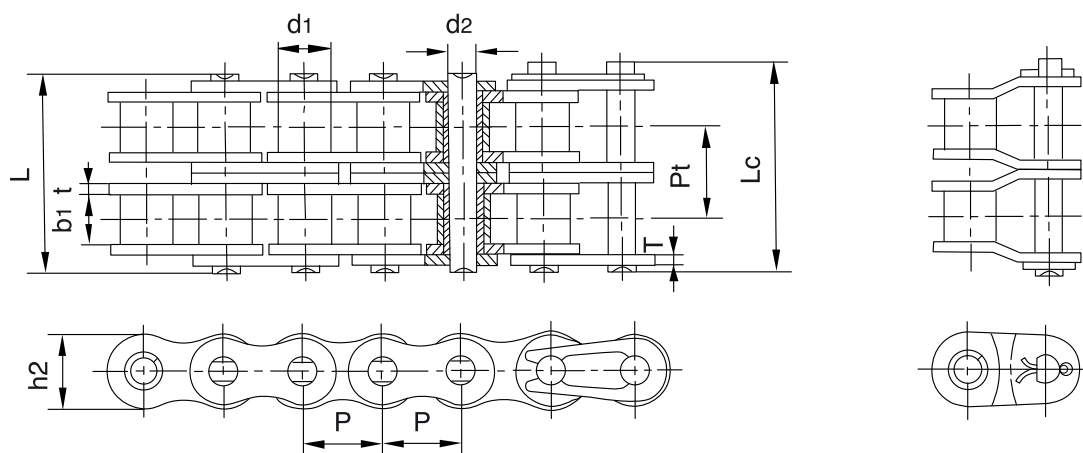
REFERENCIA	PASO	DIAMETRO DE RODILLO	ANCHO INTERIOR	DIAMETRO EJE	LONGITUD DE EJE		ANCHO MALLAS	GROSOR DE MALLAS	FUERZA DE TENSION TOTAL	FUERZA DE TENSION MEDIA	PESO POR METRO
DIN/ISO	P	d1 máx	b1 mín	d2 máx	L máx	Lc mín	h2 máx	t/T máx	Q mín.	Qo	q
	mm.	mm.	mm.	mm.	mm.	mm.	mm.	mm.	kN	kN	kg./m.
04B-1	6.000	4.00	2.80	1.85	6.80	7.8	5.00	0.60	3.0	3.2	0.11
05B-1	8.000	5.00	3.00	2.31	8.20	8.9	7.10	0.80	5.0	5.9	0.20
*06B-1	9.525	6.35	5.72	3.28	13.15	14.1	8.20	1.30	9.0	10.4	0.41
08B-1	12.700	8.51	7.75	4.45	16.70	18.2	11.80	1.60	18.0	19.4	0.69
10B-1	15.875	10.16	9.65	5.08	19.50	20.9	14.70	1.70	22.4	27.5	0.93
12B-1	19.050	12.07	11.68	5.72	22.50	24.2	16.00	1.85	29.0	32.2	1.15
16B-1	25.400	15.88	17.02	8.28	36.10	37.4	21.00	4.15/3.1	60.0	72.8	2.71
20B-1	31.750	19.05	19.56	10.19	41.30	45.0	26.40	4.5/3.5	95.0	106.7	3.70
24B-1	38.100	25.40	25.40	14.63	53.40	57.8	33.20	6.0/4.8	160.0	178.0	7.10
28B-1	44.450	27.94	30.99	15.90	65.10	69.5	36.70	7.5/6.0	200.0	222.0	8.50
32B-1	50.800	29.21	30.99	17.81	66.00	71.0	42.00	7.0/6.0	250.0	277.5	10.25
40B-1	63.500	39.37	38.10	22.89	82.20	89.2	52.96	8.5/8.0	355.0	394.0	16.35
48B-1	76.200	48.26	45.72	29.24	99.10	107.0	63.80	12/10	560.0	621.6	25.00

\* Mallas rectas

# Cadenas de Rodillos Dobles / SERIE B



Cadenas de rodillo doble



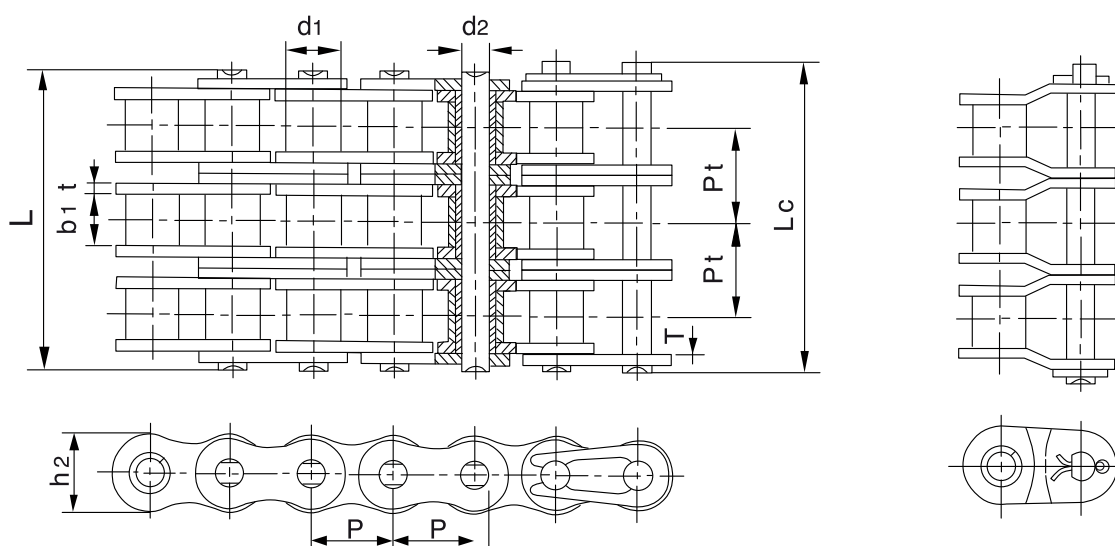
REFERENCIA	PASO	DIAMETRO DE RODILLO	ANCHO INTERIOR	DIAMETRO EJE	LONGITUD DE EJE		ANCHO MALLAS	GROSOR DE MALLAS	PASO TRANSVERSAL	FUERZA DE TENSION TOTAL	FUERZA DE TENSION MEDIA	PESO POR METRO
DIN/ISO	P mm.	d1 máx mm.	b1 mín mm.	d2 máx mm.	L máx mm.	Lc máx mm.	h2 máx mm.	t/T máx mm.	Pt mm.	Q mín. kN	Qo kN	q kg./m.
05B-2	8.000	5.00	3.00	2.31	13.9	14.5	7.10	0.80	5.64	7.8	10.2	0.33
*06B-2	9.525	6.35	5.72	3.28	23.4	24.4	8.20	1.30	10.24	16.9	18.7	0.77
08B-2	12.700	8.51	7.75	4.45	31.2	32.2	11.80	1.60	13.92	32.0	38.7	1.34
10B-2	15.875	10.16	9.65	5.08	36.1	37.5	14.70	1.70	16.59	44.5	56.2	1.84
12B-2	19.050	12.07	11.68	5.72	42.0	43.6	16.00	1.85	19.46	57.8	66.1	2.31
16B-2	25.400	15.88	17.02	8.28	68.0	69.3	21.00	4.15/3.1	31.88	106.0	133.0	5.42
20B-2	31.750	19.05	19.56	10.19	77.8	81.5	26.40	4.5/3.5	36.45	170.0	211.2	7.20
24B-2	38.100	25.40	25.40	14.63	101.7	106.2	33.20	6.0/4.8	48.36	280.0	319.2	13.40
28B-2	44.450	27.94	30.99	15.90	124.6	129.1	36.70	7.5/6.0	59.56	360.0	406.8	16.60
32B-2	50.800	29.21	30.99	17.81	124.6	129.6	42.00	7.0/6.0	58.55	450.0	508.5	21.00
40B-2	63.500	39.37	38.10	22.89	154.5	161.5	52.96	8.5/8.0	72.29	630.0	711.9	32.00
48B-2	76.200	48.26	45.72	29.24	190.4	198.2	63.80	12/10	91.21	1000.0	1130.0	50.00

\* Mallas rectas

# Cadenas de Rodillos Triples / SERIE B



Cadenas de rodillo triple



REFERENCIA	PASO	DIAMETRO DE RODILLO	ANCHO INTERIOR	DIAMETRO EJE	LONGITUD DE EJE		ANCHO MALLAS	GROSOR DE MALLAS	PASO TRANSVERSAL	FUERZA DE TENSION TOTAL	FUERZA DE TENSION MEDIA	PESO POR METRO
DIN/ISO	P mm.	d1 máx mm.	b1 mín mm.	d2 máx mm.	L máx mm.	Lc mín mm.	h2 máx mm.	t/T máx mm.	Pt mm.	Q mín. kN	Qo kN	q kg./m.
05B-3	8.000	5.00	3.00	2.31	19.5	20.2	7.10	0.80	5.64	11.1	13.8	0.48
*06B-3	9.525	6.35	5.72	3.28	33.5	34.6	8.20	1.30	10.24	24.9	30.1	1.16
08B-3	12.700	8.51	7.75	4.45	45.1	46.1	11.80	1.60	13.92	47.5	57.8	2.03
10B-3	15.875	10.16	9.65	5.08	52.7	54.1	14.70	1.70	16.59	66.7	84.5	2.77
12B-3	19.050	12.07	11.68	5.72	61.5	63.1	16.00	1.85	19.46	86.7	101.8	3.46
16B-3	25.400	15.88	17.02	8.28	99.8	101.2	21.00	4.15/3.1	31.88	160.0	203.7	8.13
20B-3	31.750	19.05	19.56	10.19	114.2	117.9	26.40	4.5/3.5	36.45	250.0	290.0	10.82
24B-3	38.100	25.40	25.40	14.63	150.1	154.6	33.20	6.0/4.8	48.36	425.0	493.0	20.10
28B-3	44.450	27.94	30.99	15.90	184.2	188.7	36.70	7.5/6.0	59.56	530.0	609.5	24.92
32B-3	50.800	29.21	30.99	17.81	183.2	188.2	42.00	7.0/6.0	58.55	670.0	770.5	31.56
40B-3	63.500	39.37	38.10	22.89	226.8	233.8	52.96	8.5/8.0	72.29	950.0	1092.5	48.10
48B-3	76.200	48.26	45.72	29.24	281.6	289.4	63.80	12/10	91.21	1500.0	1710.0	75.00

\* Mallas rectas

# Cadenas de Rodillos con Aletas / SERIE B



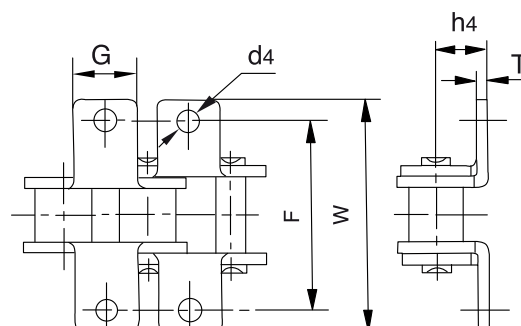
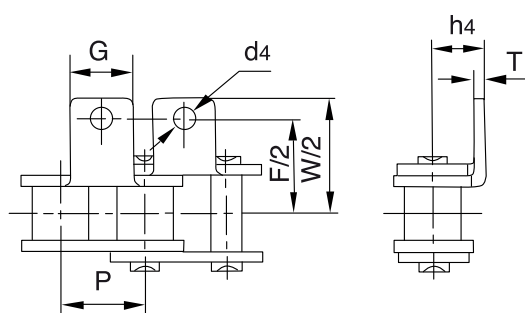
**Aleta 90° 1 lado 1 taladro**

**A-1**



**Aleta 90° 2 lados 1 taladro**

**K-1**



REFERENCIA DIN/ISO	P mm.	G mm.	F mm.	W mm.	T mm.	h4 mm.	d4 mm.
*06B	9.525	8.0	19.04	27.0	1.30	6.50	3.5
08B	12.700	9.5	25.40	36.4	1.60	8.90	4.5
10B	15.875	14.3	31.75	44.6	1.70	10.31	5.3
12B	19.050	16.0	38.10	52.4	1.85	13.46	6.4
16B	25.400	19.1	50.80	72.6	3.10	15.88	6.4
20B	31.750	35.0	63.50	100.5	3.50	19.80	9.0
24B	38.100	30.0	76.20	108.4	4.80	26.67	10.5

\* Mallas rectas

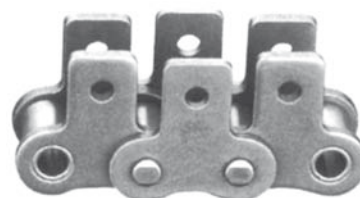
# Estas referencias disponibles también en acero inoxidable

# Cadenas de Rodillos con Aletas / **SERIE B**



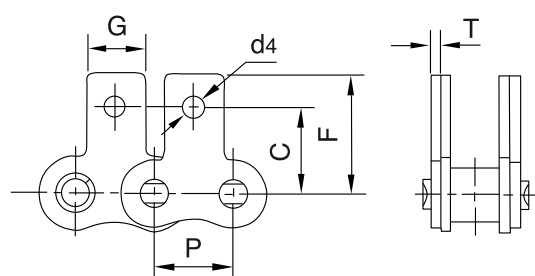
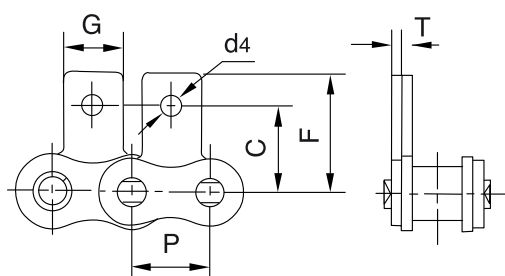
**Aleta Vertical 1 lado 1 taladro**

**SA-1**



**Aleta Vertical 2 lado 1 taladro**

**SK- 1**



REFERENCIA DIN/ISO	P mm.	G mm.	C mm.	F mm.	T mm.	d4 mm.
*06B	9.525	8.0	9.52	13.50	1.30	3.5
08B	12.700	9.5	13.35	18.90	1.60	4.3
10B	15.875	14.3	16.50	22.95	1.70	5.3
12B	19.050	16.0	21.45	28.60	1.85	6.4
16B	25.400	19.1	23.15	34.00	3.10	6.4
20B	31.750	35.0	30.50	45.70	3.50	9.0

\* Mallas rectas

# Estas referencias disponibles también en acero inoxidable

# Cadenas de Rodillos con Aletas / SERIE B



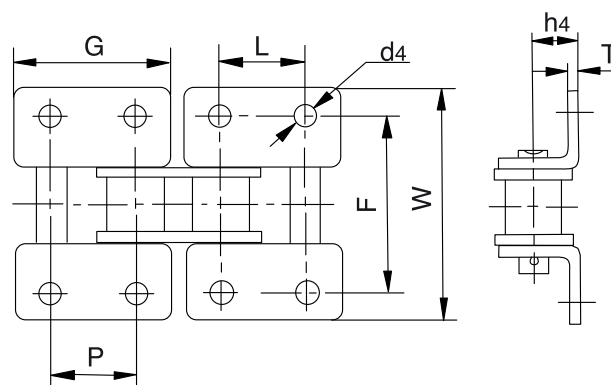
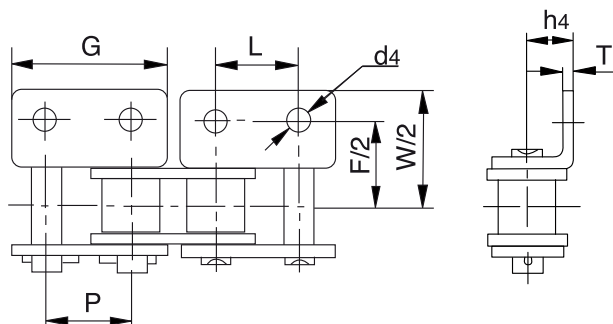
Aleta 90° 1 lado 2 taladros

W A-2



Aleta 90° 2 lados 2 taladros

W K-2

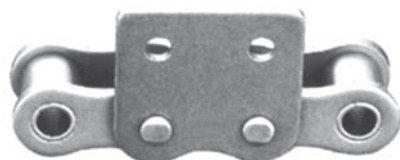


REFERENCIA DIN/ISO	P mm.	G mm.	L mm.	F mm.	W mm.	T mm.	h4 mm.	d4 mm.
* 06	9.52	17,65	9.52	19.05	27,50	1.30	6.50	3.5
08B	12.700	24.00	12.700	25.40	36.4	1.60	8.90	4.3
10B	15.875	29.58	15.875	31.80	44.6	1.70	10.31	5.3
12B	19.050	34.05	19.050	38.10	52.4	1.85	13.46	6.4
16B	25.400	46.40	25.400	50.80	72.6	3.10	15.88	6.4
20B	31.750	58.10	31.750	63.00	100.5	3.50	19.80	9.0
24B	38.100	71.30	38.100	76.20	108.4	4.80	26.67	10.5

\* Mallas rectas

# Estas referencias disponibles también en acero inoxidable

# Cadenas de Rodillos con Aletas / SERIE B



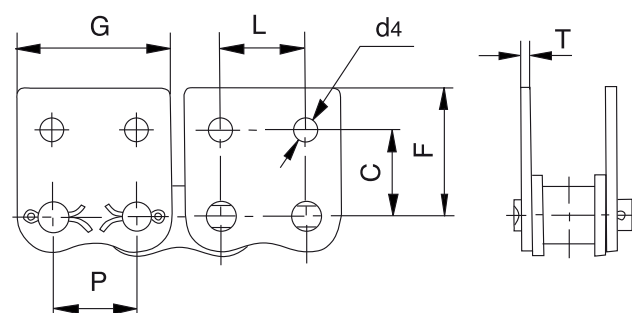
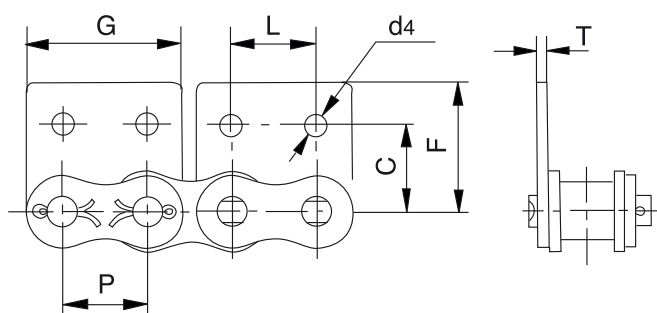
Aleta vertical 1 lado 2 taladros

W SA-2



Aleta vertical 2 lados 2 taladros

WSK-2



REFERENCIA DIN/ISO	P mm.	G mm.	L mm.	C mm.	F mm.	T mm.	d <sub>4</sub> mm.
*06B	9.52	17,65	9.52	9.52	13.50	1.30	3.5
8B	12.700	23.30	12.700	13.35	18.90	1.60	4.3
10B	15.875	29.58	15.875	16.50	22.95	1.70	5.3
12B	19.050	34.05	19.050	21.45	28.60	1.85	6.4
16B	25.400	46.40	25.400	23.15	34.00	3.10	6.4
20B	31.750	58.10	31.750	30.50	45.70	3.50	9.0

\* Mallas rectas

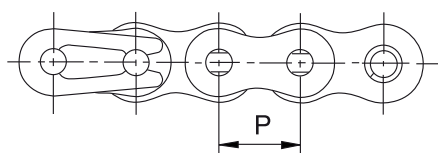
# Estas referencias disponibles también en acero inoxidable



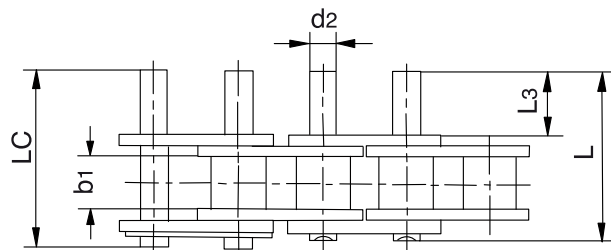
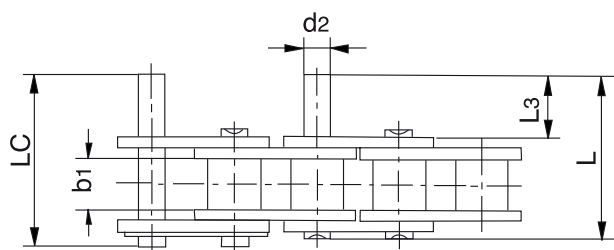
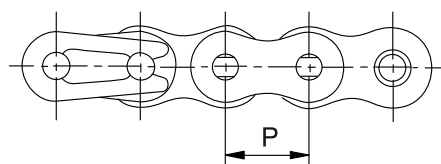
# Cadenas de Rodillos con Pivotes / **SERIE B**



**Cada 2 pasos**



**Todos los pasos**



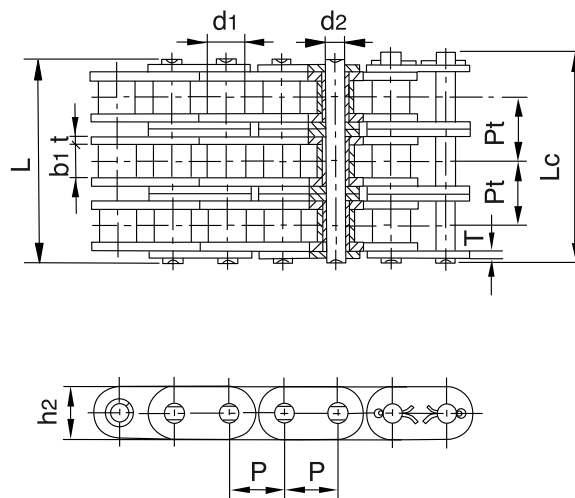
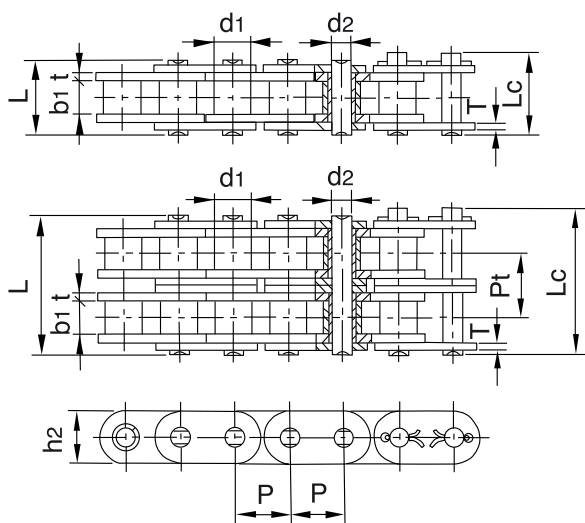
REFERENCIA DIN/ISO	P mm.	b <sub>1</sub> mm.	d <sub>2</sub> mm.	L <sub>3</sub> mm.	L mm.	L <sub>c</sub> mm.
*06B	9.52	5.72	3.28	11.3	23.4	24.4
08B	12.700	7.75	4.45	15.5	31.2	32.2
10B	15.875	9.65	5.08	17.8	36.1	37.5
12B	19.050	11.68	5.72	20.7	42.0	43.6
16B	25.400	17.02	8.28	33.2	68.0	69.3

\* Mallas rectas

Al solicitarse cadenas con ejes, deberá indicarse la alternancia o distribución de los mismos en la cadena, así como el tipo de eje (corto, normal o largo) que se desea.



# Cadenas de Rodillos Mallas Rectas / SERIE B



REFERENCIA	PASO	DIAMETRO DE RODILLO	ANCHO INTERIOR	DIAMETRO EJE	LONGITUD DEL EJE		ANCHO MALLAS	GROSOR DE MALLAS	PASO TRANSVERSAL	FUERZA DE TENSION TOTAL	FUERZA DE TENSION MEDIA	PESO POR METRO
DIN/ISO	P mm.	d1 máx mm.	b1 mín mm.	d2 máx mm.	L máx mm.	Lc máx mm.	h2 máx mm.	t/T máx mm.	Pt mm.	Q mín. kN	Qo kN	q kg./m.
C08B-1	12.700	8.51	7.75	4.45	16.7	18.2	11.8	1.60		18.0	19.5	0.80
C10B-1	15.875	10.16	9.65	5.08	19.5	20.9	14.7	1.70		22.4	27.9	1.06
C12B-1	19.050	12.07	11.68	5.72	22.5	25.2	16.0	1.85		29.0	32.2	1.32
C16B-1	25.400	15.88	17.02	8.28	36.1	39.1	21.0/24.0	4.15/3.1		60.0	72.8	3.08/3.49
C20B-1	31.750	19.05	19.56	10.19	41.3	45.0	26.4	4.5/3.5		95.0	106.7	4.16
C24B-1	38.100	25.40	25.40	14.63	53.4	57.8	33.2	6.0/4.8		160.0	178.0	7.47
C28B-1	44.450	27.94	30.99	15.90	65.1	69.5	36.7	7.5/6.0		200.0	222.0	9.90
C32B-1	50.800	29.21	30.99	17.81	66.0	71.0	42.0	7.0/6.0		250.0	277.5	10.45
C08B-2	12.700	8.51	7.75	4.45	31.2	32.2	11.8	1.60	13.92	32.0	38.7	1.45
C10B-2	15.875	10.16	9.65	5.08	36.1	37.5	14.7	1.70	16.59	44.5	57.8	2.00
C12B-2	19.050	12.07	11.68	5.72	42.0	44.7	16.0	1.85	19.46	57.8	66.1	2.62
C16B-2	25.400	15.88	17.02	8.28	68.0	71.0	21.0/24.0	4.15/3.1	31.88	106.0	133.0	6.10/6.92
C20B-2	31.750	19.05	19.56	10.19	77.8	81.5	26.4	4.5/3.5	36.45	170.0	211.2	8.23
C24B-2	38.100	25.40	25.40	14.63	101.7	106.2	33.2	6.0/4.8	48.36	280.0	319.2	14.77
C28B-2	44.450	27.94	30.99	15.90	124.6	129.1	36.7	7.5/6.0	59.56	360.0	406.8	19.82
C32B-2	50.800	29.21	30.99	17.81	124.6	129.6	42.0	7.0/6.0	58.55	450.0	508.5	20.94
C08B-3	12.700	8.51	7.75	4.45	45.1	46.1	11.8	1.60	13.92	47.5	57.8	2.10
C10B-3	15.875	10.16	9.65	5.08	52.7	54.1	14.7	1.70	16.59	66.7	84.5	2.87
C12B-3	19.050	12.07	11.68	5.72	61.5	64.2	16.0	1.85	19.46	86.7	101.8	3.89
C16B-3	25.400	15.88	17.02	8.28	99.8	102.9	21.0/24.0	4.15/3.1	31.88	160.0	203.7	9.12/10.34
C20B-3	31.750	19.05	19.56	10.19	114.2	117.9	26.4	4.5/3.5	36.45	250.0	290.0	11.34
C24B-3	38.100	25.40	25.40	14.63	150.1	154.6	33.2	6.0/4.8	48.36	425.0	493.0	22.10
C28B-3	44.450	27.94	30.99	15.90	184.2	188.7	36.7	7.5/6.0	59.56	530.0	609.5	29.64
C32B-3	50.800	29.21	30.99	17.81	183.2	188.2	42.0	7.0/6.0	58.55	670.0	770.5	31.27